

# SIRUBA

零件圖

PARTS LIST

■ 500Qe



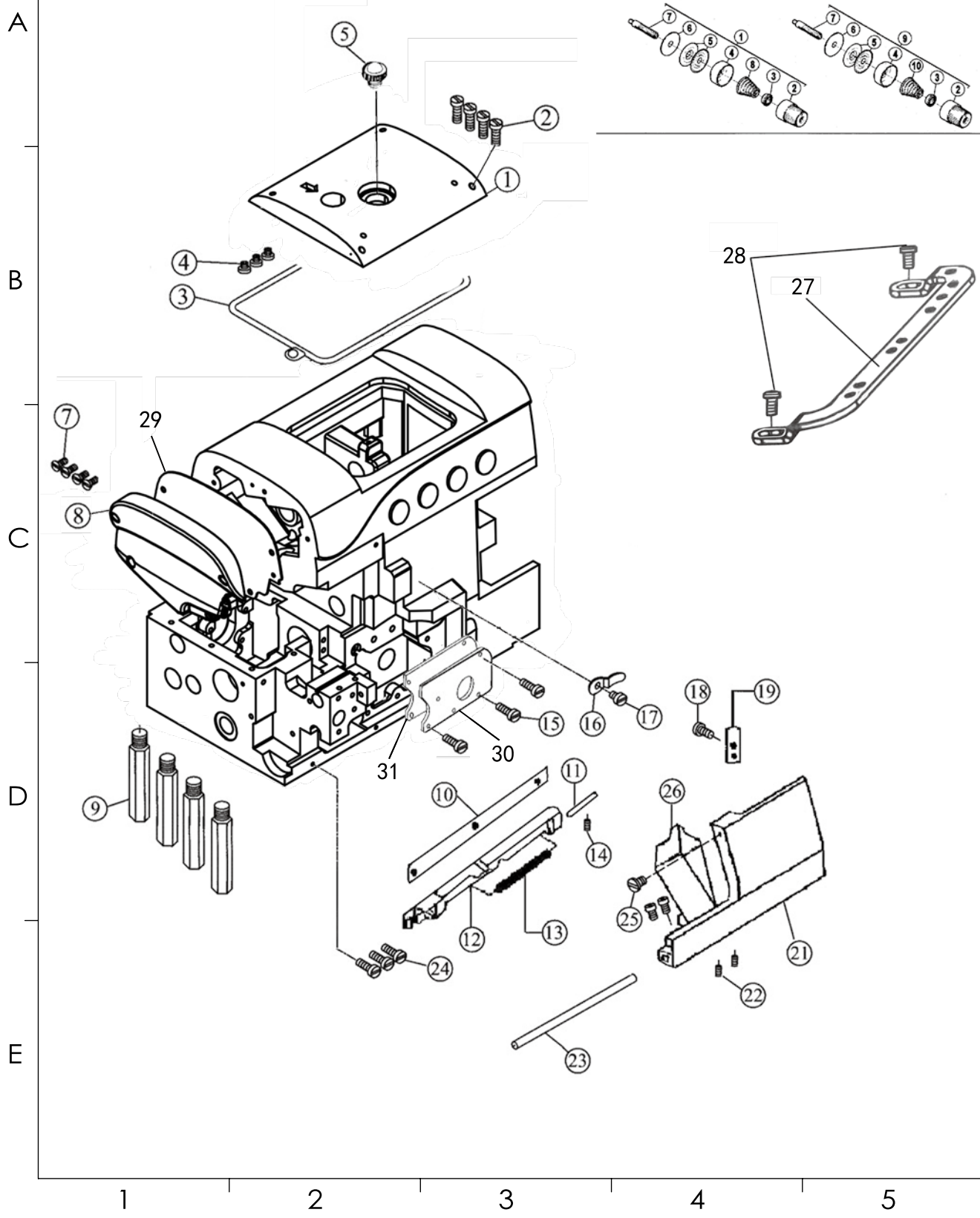
<b>SIRUBA</b> PARTS LIST	Series		Parts Group		Subclass Remark		Page	
	<b>500Qe</b>						1 / 1	
							Date	
						2024/07/30		

A	機型	用途											
			針板 編號	主送布 牙編號	差 動牙 編號	壓腳	上彎 針	針夾	墊圈	針桿 曲柄	下彎 針擺 動曲 柄	針號	
B	537Qe -504M -3-04	一般縫紉，薄、中 厚物，用於基本縫 紉及西褲包邊	213100 -400	277008 -16	277418 -13	277404 -16F0	P253E-4	LP26	KG131-E	KJ10F	KF25-A	KJ09B-E	DC27#11
	547Qe -514M -3-24	一般縫紉，薄、中 厚物，用於針織內 衣，婦女、兒童等 服裝府縫，腋縫等 作業	211313 -400	277408 -16F0	277418 -14	277404 -16F0	P253E-4	LP26	KG142-E	KJ13F	KF26-A	KJ11B-E	DC27#11*2
	557Qe -516M -3-35	一般縫紉，薄、中 厚物，用於襪子、 睡衣、襯衫、運動 服等直縫作業，縫 紉寬度 0.8cm	277517 R40	277324 -16	277318 -13	277330 -16	P504-A	LP26	KG153-E	KJ13F	KF26-A	KJ11B-E	DC27#14*2

C												
D												
E												



<b>SIRUBA</b> PARTS LIST	Series	Parts Group	Subclass Remark	Page
	<b>500Qe</b>	<b>01</b>		1 / 1
				Date
				2024/07/30



<b>SIRUBA</b> SEQUENCE LIST	Series	Parts Group	Subclass Remark	Page
	<b>500Qe</b>	<b>01</b>		1 / 1
				Date
				2024/07/30

序號 Ref.No	零件編號 Part No.	名稱	Name	數量 Amt. Req.		
				3	4	5
1	V20-2-7	上蓋	top cover	1	1	1
2	M1-2	螺釘	screw	4	4	4
3	V20-2-9	密封墊	gasket	1	1	1
4	M1-4	減震墊	cushion rubber	3	3	3
5	M1-5	油標蓋	oil idverl gauge washer	1	1	1
7	M1-7	螺釘	screw	4	4	4
8	V20-2-10	左蓋	left cover	1	1	1
9	M1-9	支柱	bed pin	4	4	4
10	M1-10	前罩架墊	front cover hinge washer	1	1	1
11	M1-11	銷	pin	1	1	1
12	M1-12	前罩架	front cover hinge	1	1	1
13	M1-13	鉸鏈銷彈簧	hinge pin spring	1	1	1
14	M1-14	螺釘	screw	1	1	1
15	M1-15	螺釘	screw	3	3	3
16	M1-16	前罩闔卡簧	front cover snapping	1	1	1
17	M1-17	螺釘	screw	1	1	1
18	M1-18	螺釘	screw	1	1	1
19	M1-19	鎖緊板	locking plate	1	1	1
21	M1-21	前單	frong cover	1	1	1
22	M1-22	螺釘	screw	2	2	2
23	M1-23	鉸鏈銷	nlnge pln	1	1	1
24	M1-24	螺釘	screw	3	3	3
25	M1-25	螺釘	screw	3	3	3
26	M1-26	前門擋板	front cover guard	1	1	1
27	V20-5-1	導線架	lead frame	1	1	1
28	7018	螺釘	screw	2	2	2
29	V20-2-11	左蓋墊	left cover washer	1	1	1
30	747-2-12	上彎針密封板	upper looper sealing plate	1	1	1
31	747-2-13	上彎針密封板墊	upper looper sealing plate washer	1	1	1

A

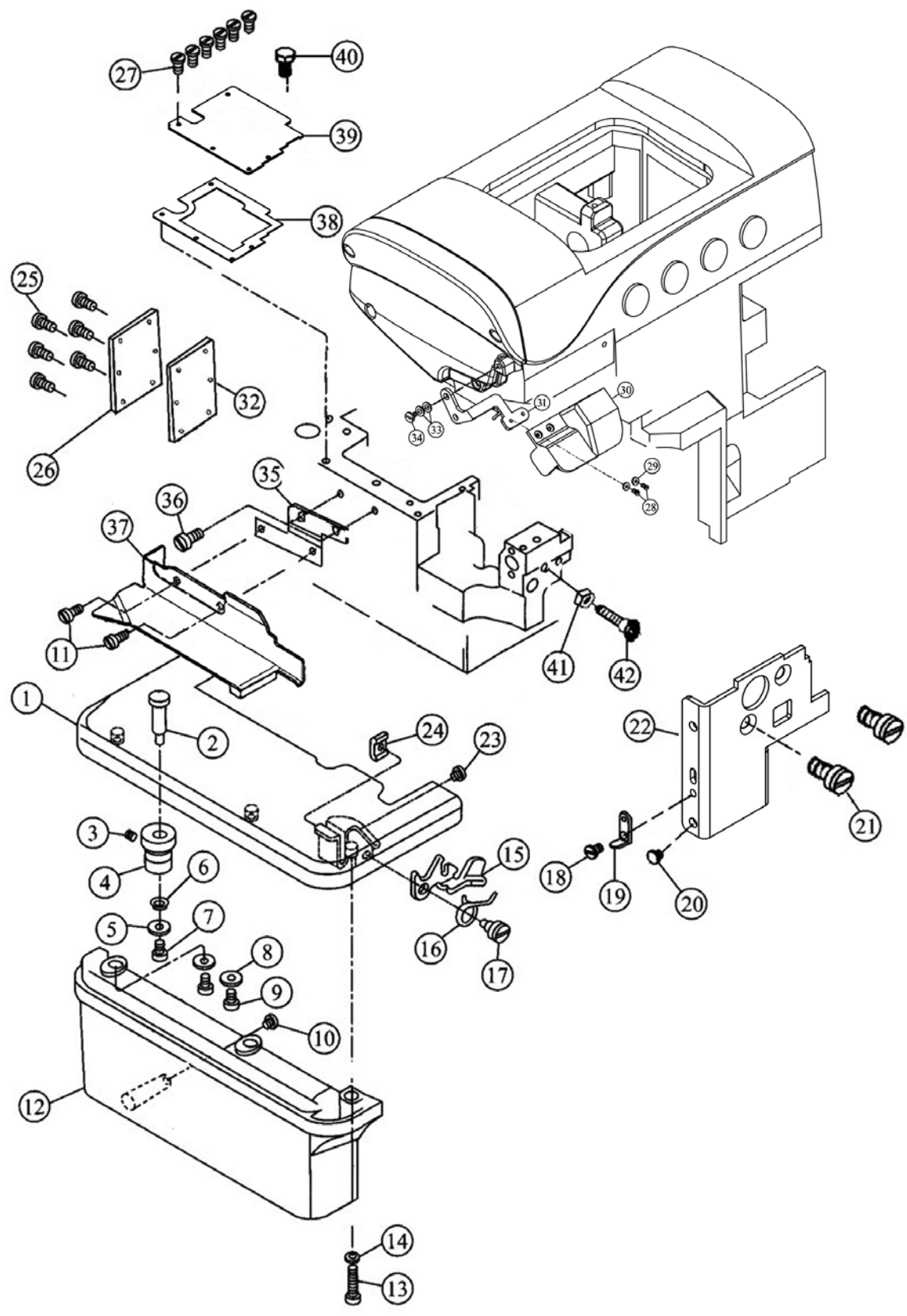
B

C

D

E

A  
B  
C  
D  
E



1 2 3 4 5

<b>SIRUBA</b> SEQUENCE LIST	Series	Parts Group	Subclass Remark	Page
	<b>500Qe</b>	<b>02</b>		1 / 1
				Date
				2024/07/30

	序號 Ref.No	零件編號 Part No.	名稱	Name	數量 Amt. Req.		
					3	4	5
A	1	M2-1	縫台	to cloth plate	1	1	0
		5M2-1	縫台	to cloth plate	0	0	1
	2	M2-2	軸銷	shaft pin	1	1	1
	3	M2-3	螺釘	screw	1	1	1
	4	M2-4	銅套	copper sheathing	1	1	1
	5	M2-5	墊片	washer	2	2	2
	6	M2-6	波形墊片	washer	1	1	1
	7	M2-7	螺釘	screw	3	3	3
	8	M2-8	墊片	washer	3	3	3
B	9	M2-9	螺釘	screw	3	3	3
	10	M2-10	防震墊	cras pad	1	1	1
	11	M2-11	螺釘	screw	2	2	2
	12	M2-12	縫台下罩殼	cloth blate lower plate	1	1	0
		5M2-12	縫台下罩殼	cloth blate lower plate	0	0	1
	13	M2-13	螺釘	screw	1	1	1
	14	M2-14	墊片	washer	1	1	1
	15	M2-15	護板	bach plate	1	1	1
	16	M2-16	彈簧	spring	1	1	1
C	17	M2-17	軸位螺釘	shaft screw	1	1	1
	18	M2-18	螺釘	screw	1	1	1
	19	M2-19	卡簧	snaping	1	1	1
	20	M2-20	防震墊	crash pad	1	1	1
	21	M2-21	螺釘	screw	2	2	2
	22	M2-22	下刀架擋板	lower knife holser bnck plate	1	1	1
	23	M2-23	螺釘	screw	1	1	1
	24	M2-24	墊片	washer	1	1	1
	25	M2-25	螺釘	screw	6	6	6
D	26	M2-26	後窗板	rear window plate	1	1	1
	27	M2-27	螺釘	screw	6	6	6
	28	M2-28	螺釘	screw	2	2	2
	29	M2-29	墊片	washer	2	2	2
	30	M2-30	防護罩	shield	1	1	1
	31	M2-31	支架	holder	1	1	1
	32	M2-32	後窗板墊	rear window plate washer	1	1	1
	33	M2-33	墊片	washer	2	2	2
	34	M2-34	螺釘	screw	1	1	1
E	35	M2-35	支架	holder	1	1	1
	36	M2-36	螺釘	screw	2	2	2
	37	M2-37	布料擋板	cloth back plate	1	1	1
	38	M2-38	紙墊	poper washer	1	1	1
	39	M2-39	左上蓋	upper left cover	1	1	1
	40	M2-40	螺釘	screw	1	1	1
	41	M2-41	螺母	nut	1	1	1
	42	M2-42	螺釘	screw	1	1	1

1

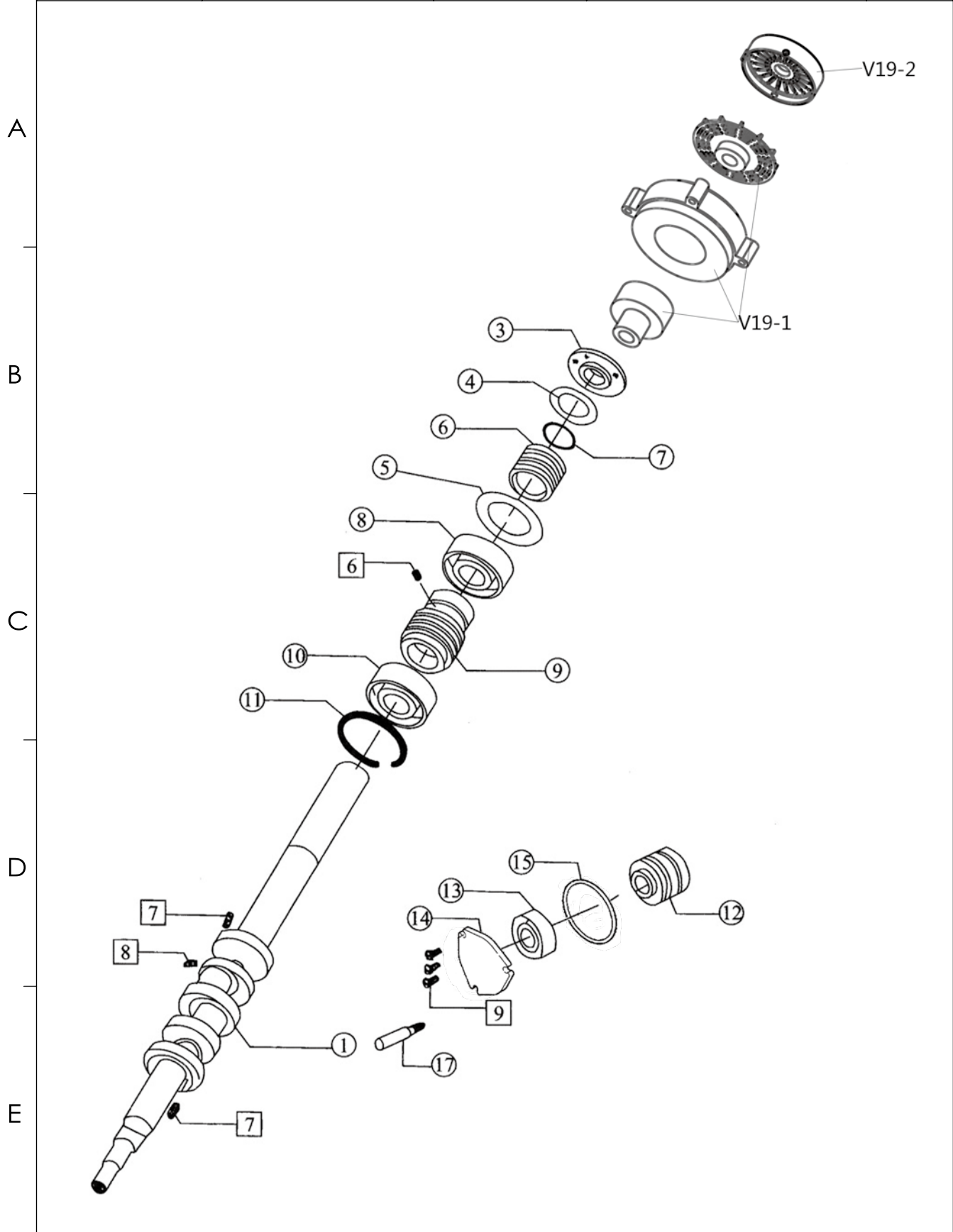
2

3

4

5

<b>SIRUBA</b> PARTS LIST	Series	Parts Group	Subclass Remark	Page
	<b>500Qe</b>	<b>03</b>		1 / 1
				Date
				2024/07/30



<b>SIRUBA</b> SEQUENCE LIST	Series	Parts Group	Subclass Remark	Page		
	<b>500Qe</b>	<b>03</b>		1 / 1		
				Date		
				2024/07/30		

序號 Ref.No	零件編號 Part No.	名 稱	Name	數量 Amt. Req.		
				3	4	5
6	M3-6	主軸中軸套	main shaft bysgubg asm	1	1	1
7	M3-7	主軸[密封圈]	Seal ring	1	1	1
8	M3-8	主軸後軸承	main shaft queen shaft bearing	1	1	1
9	M3-9	油泵螺桿	oil pump worm	1	1	1
10	M3-10	主軸軸承	main shaft bearing	1	1	1
11	M3-11	卡簧	shaft end bushing washer	1	1	1
12	M3-12	主軸左套筒	main shaft light bushing	1	1	1
13	M3-13	軸承80200	bearing 80200	1	1	1
14	M3-14	軸承蓋	bearing cover	1	1	0
	5M3-14	軸承蓋	bearing cover	0	0	1
15	M3-15	軸承蓋墊圈	bearing cover washer	1	1	1
17	5M3-17	凸輪軸	bulgy pulley bearing	0	0	1
1	S073	皮帶輪螺釘	pulley screw	1	1	1
2	W03	皮帶輪螺釘墊圈	pulley screw washer	1	1	1
3	S070	皮帶輪頂絲	pulley set screw	1	1	1
4	S085	皮帶輪定位螺釘	pulley set screw	1	1	1
5	S032	滾針軸承止動蓋螺釘	rear shafting bearint cover srew	3	3	3
6	S043	油泵蝸杆螺釘	oil pump worm screw	1	1	1
7	S078	油瓦螺釘	screw	2	2	2
8	S019	油孔螺釘	screw	1	1	1
9	S022	軸承蓋螺釘	bearing cover screw	3	3	3
10	V19-1	電機組件	Electrical components	1	1	1
11	V19-2	手輪	Handwheel	1	1	1

A

B

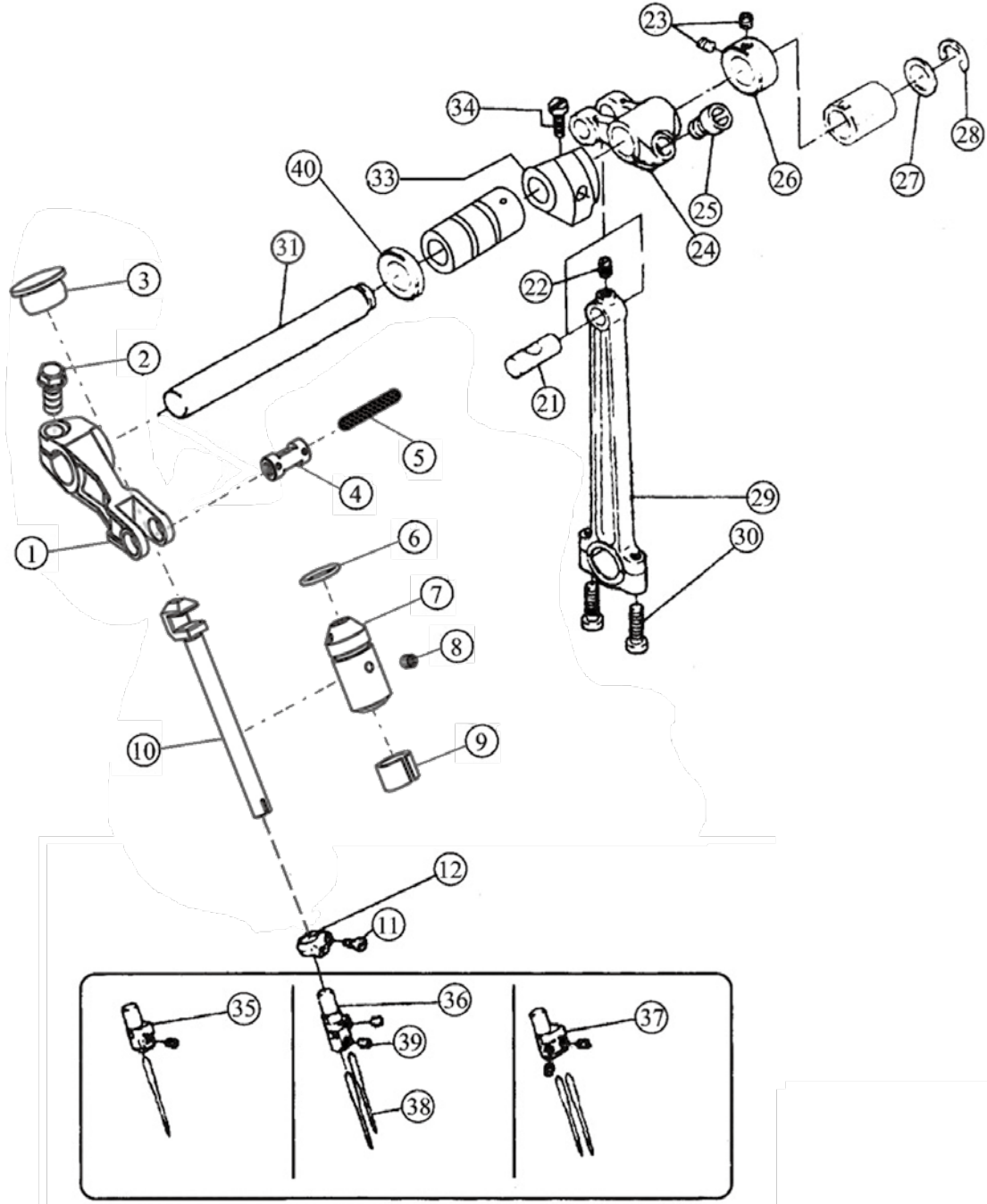
C

D

E

<b>SIRUBA</b> PARTS LIST	Series	Parts Group	Subclass Remark	Page
	<b>500Qe</b>	<b>04</b>		1 / 1
				Date
				2024/07/30

A  
B  
C  
D  
E



1 2 3 4 5

<b>SIRUBA</b> SEQUENCE LIST	Series	Parts Group	Subclass Remark	Page
	<b>500Qe</b>	<b>04</b>		1 / 1
				Date
				2024/07/30

序號 Ref.No	零件編號 Part No.	名稱	Name	數量 Amt. Req.		
				3	4	5
1	M4-1	曲柄	crank	1	1	1
2	M4-2	螺釘	screw	1	1	1
3	M4-3	橡膠塞	rubber plug	1	1	1
4	M4-4	肖子	pin	1	1	1
5	M4-5	油線	oil wick	1	1	1
6	M4-6	O型圈	O ring	1	1	1
7	M4-7	針桿套	needle bar bush	1	1	1
8	M4-8	螺釘	screw	1	1	1
9	M4-9	針桿套毛氈	felt for needle bush	1	1	1
10	M4-10	針杆	needle bar	1	1	1
11	M4-11	螺釘	screw	1	1	1
12	M4-12	針桿圈	needle bar ring	1	1	1
13						
14						
15						
16						
17						
18						
19						
20				1	1	1
21	M4-21	肖子	pin	1	1	1
22	M4-22	螺釘	screw	1	1	1
23	M4-23	螺釘	screw	1	1	1
24	M4-24	曲柄	crank	1	1	1
25	M4-25	螺釘	screw	1	1	1
26	M4-26	擋圈	snap ring	1	1	1
27	M4-27	墊片	washer	1	1	1
28	M4-28	卡簧	snap ring	1	1	1
29	M4-29	長連桿	long connecting rod	1	1	1
30	M4-30	螺釘	screw	2	2	2
31	M4-31	上軸	upper shaft	1	1	1
32						
33	M4-33	針桿擺軸平衡塊	balance block	1	1	1
34	M4-34	螺釘	screw	1	1	1
35	M4-35	針古	needle clamp	1	0	0
36	M4-36	針古	needle clamp	0	1	0
37	M4-37	針古	needle clamp	0	0	1
38	M4-38	機針	needle	1	2	2
39	M4-39	螺釘	screw	1	2	2
40	M4-40	油封	oil seal	1	1	1

1

2

3

4

5

<b>SIRUBA</b> PARTS LIST	Series	Parts Group	Subclass Remark	Page
	<b>500Qe</b>	<b>05</b>		1 / 1
				Date
				2024/07/30

序號 Ref.No	零件編號 Part No.	名稱	Name	數量 Amt. Req.		
				3	4	5
44	V20-19-36	螺母	nut	1	1	1
45	V20-19-53	O型圈	type "O" washer	1	1	1
46	V20-19-54	O型圈	type "O" washer	2	2	2
47	V20-19-55	壓桿套	compression rod	1	1	1

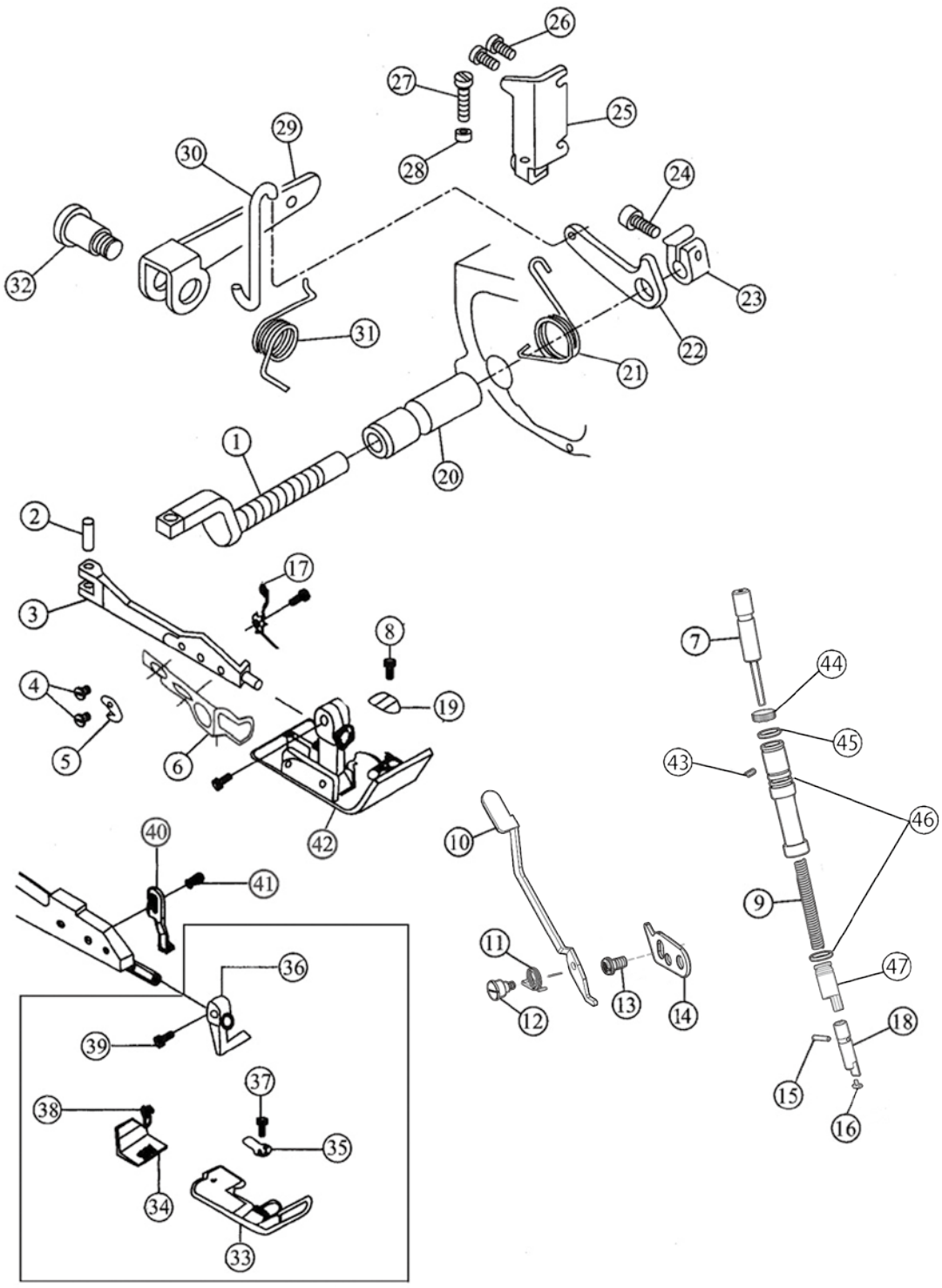
A

B

C

D

E



1                      2                      3                      4                      5

<b>SIRUBA</b> SEQUENCE LIST	Series	Parts Group	Subclass Remark	Page
	<b>500Qe</b>	<b>05</b>		1 / 1
				Date
				2024/07/30

	序號 Ref.No	零件編號 Part No.	名稱	Name	數量 Amt. Req.		
					3	4	5
A	1	M5-1	壓腳軸	pressor foot shaft	1	1	1
	2	M5-2	肖子	pin	1	1	1
	3	M5-3	壓腳臂	pressor foot	1	1	1
	4	M5-4	螺釘	screw	3	3	3
	5	M5-5	割線刀	thread cutting knife	1	1	1
B	6	M5-6	護指器	finger protector	1	1	1
	7	M5-7	調節螺絲	screw	1	1	1
	8	M5-8	螺釘	screw	1	1	1
	9	M5-9	彈簧	spring	1	1	1
	10	M5-10	扳手	lifting handle	1	1	1
C	11	M5-11	彈簧	spring	1	1	1
	12	M5-12	螺釘	screw	1	1	1
	13	M5-13	螺釘	screw	1	1	1
	14	M5-14	調節板	stopper	1	1	1
	15	M5-15	肖	pin	1	1	1
D	16	M5-16	橡膠墊	washer	1	1	1
	17	5M5-17	壓腳彈簧	pressor foot	0	0	1
	18	M5-18	壓桿組件	pressor bar form	1	1	1
	19	M5-19	小壓腳	lifter presser foot	0	1	0
	20	M5-20	壓腳軸套	pressor foot shaft bushing	1	1	1
E	21	M5-21	彈簧	spring	1	1	1
	22	M5-22	抬壓腳曲柄	pressor foot cranh	1	1	1
	23	M5-23	抬壓腳曲柄	pressor foot cranh	1	1	1
	24	M5-24	螺釘	screw	1	1	1
	25	M5-25	角板	stopper	1	1	1
	26	M5-26	螺釘	screw	2	2	2
	27	M5-27	螺釘	screw	1	1	1
	28	M5-28	螺母	nut	1	1	1
	29	M5-29	抬壓腳槓桿	pressor foot lever	1	1	1
	30	M5-30	彎鈎	hggk	1	1	1
	31	M5-31	彈簧	spring	1	1	1
	32	M5-32	抬壓腳螺釘	pressor foot screw	1	1	1
	33	M5-33	壓腳底板	pressor foot base	0	1	0
	34	M5-34	壓腳底板簧片	pressor foot	1	1	1
	35	M5-35	壓腳小舌頭簧片	pressor foot base	1	1	1
	36	M5-36	壓腳接柄	pressor foot holder	1	1	1
	37	M5-37	螺釘	screw	1	1	1
	38	M5-38	螺釘	screw	1	1	1
	39	M5-39	螺釘	screw	1	1	1
	40	M5-40	壓腳架連接板	pressor foot holder conneting plate	1	1	1
	41	M5-41	螺釘	screw	1	1	1
	42	3M5-42	壓腳組件	pressor form	1	0	0
		4M5-42	壓腳組件	pressor form	0	1	0
		5M5-42	壓腳組件	pressor form	0	0	1

1

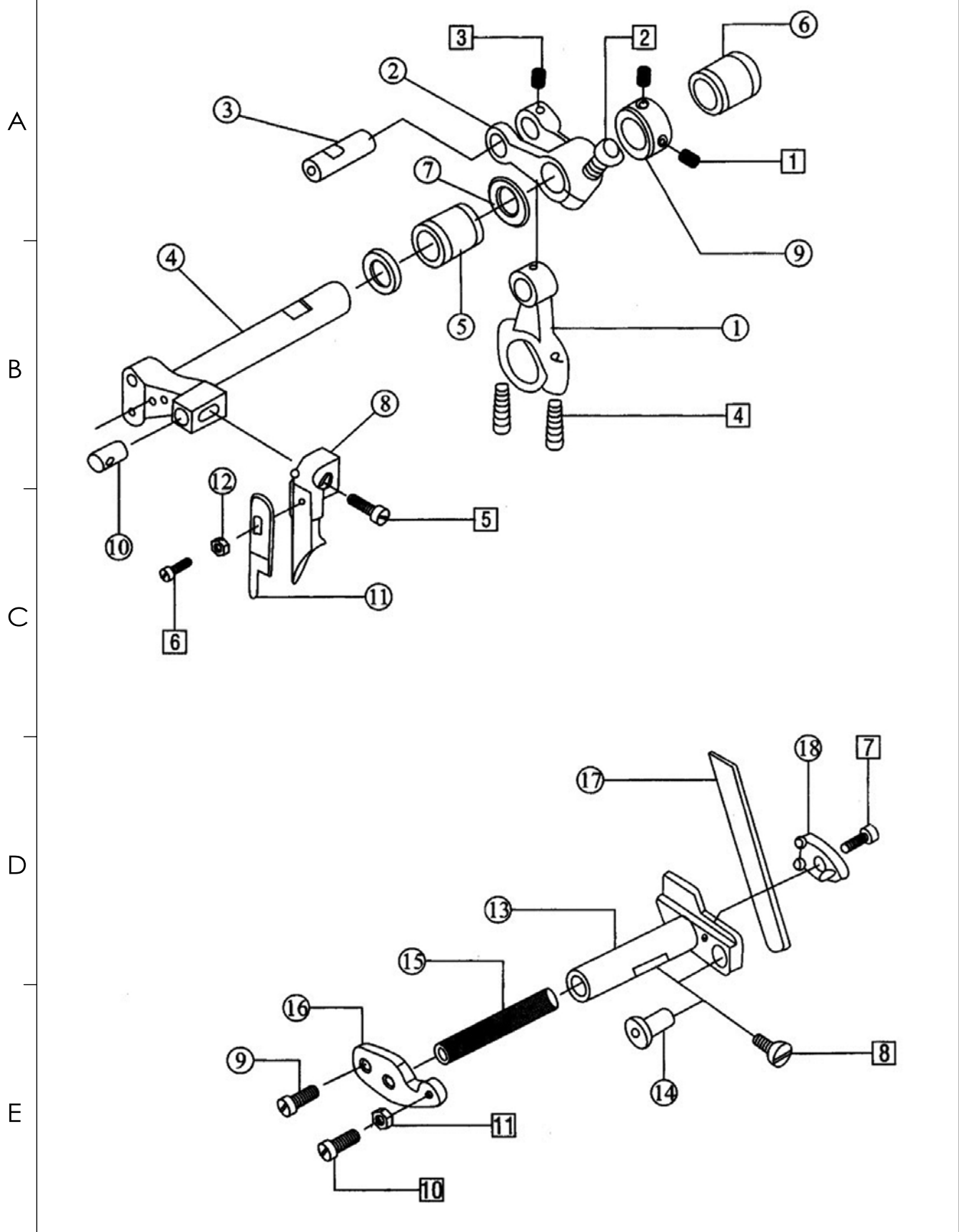
2

3

4

5

<b>SIRUBA</b> PARTS LIST	Series	Parts Group	Subclass Remark	Page
	<b>500Qe</b>	<b>06</b>		1 / 1
				Date 2024/07/30



1                      2                      3                      4                      5



<b>SIRUBA</b> PARTS LIST	Series	Parts Group	Subclass Remark	Page
	<b>500Qe</b>	<b>07</b>		1 / 1
				Date
				2024/07/30

序號 Ref.No	零件編號 Part No.	名稱	Name	數量 Amt. Req.		
				3	4	5
5	S015	過線架螺釘	thread guide holder screw	2	2	2
6		螺釘	screw	1	1	1
7	4543	固定螺釘	set screw	1	1	1
8	S005	後護針擋螺釘	rear needle guard screw	2	2	2
9	S023	護針擋螺釘	needle guard screw	1	1	1
10	W07	護針擋墊圈	needle tuard washer	1	1	1
11	S017	挑線螺釘	thread take up screw	2	2	2
12	S103	擋板螺釘I	snap plate screw I	2	2	2
13	S019	擋板螺釘II	snap plate screw II	1	1	1
14	S104	擋板定位螺釘	snap plate set screw	1	1	1
15	V20-11-6	前針板座	front needle plate seat	1	1	1
16	V20-11-7	螺釘	screw	2	2	2
17	V20-11-5	防震墊	cushion rubber	2	2	2

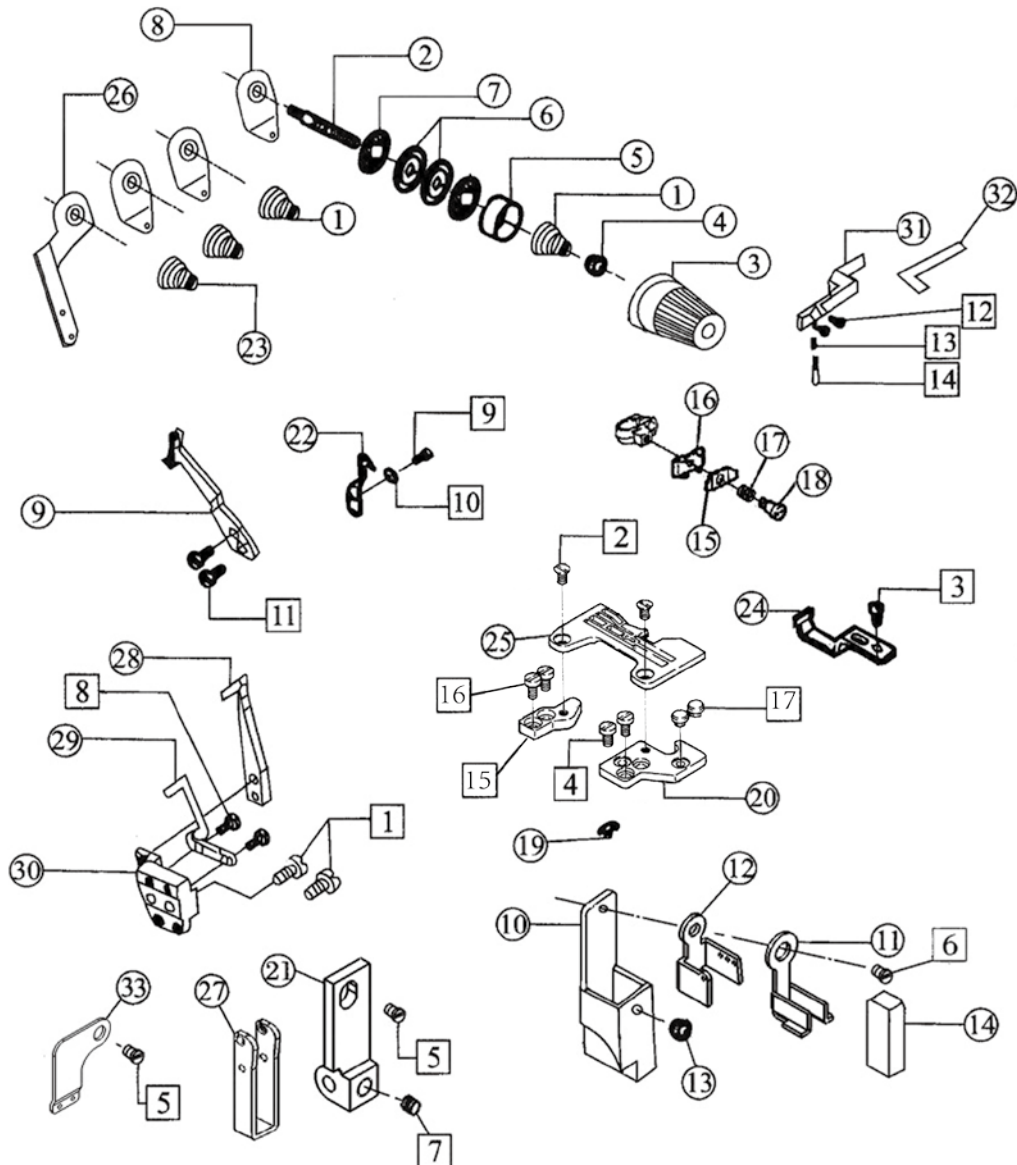
A

B

C

D

E



1

2

3

4

5

SiRUBA SEQUENCE LIST		Series		Parts Group	Subclass Remark			Page
		500Qe		07				1 / 1
								Date
								2024/07/30
序號 Ref.No	零件編號 Part No.	名稱	Name	數量 Amt. Req.				
				3	4	5		
A	1	M7-1	彎針調壓簧	thread tension spring	2	2	2	
	2	M7-2	夾線螺釘	thread tension screw	3	4	4	
	3	M7-3A	調壓螺母	thread tension nut	3	4	4	
	4	M7-4	調壓止動套	thread tension spring	3	4	4	
	5	M7-5A	調壓止動蓋	thread tension spring retainer house	3	4	4	
	6	M7-6	線片	thread tension disc	6	8	8	
	7	M7-7	火線片墊	thread tension disc washer	6	8	8	
	8	M7-8A	過線板	thread guide	2	3	3	
	9	M7-9	挑線板	upper thread take-up	1	1	0	
		5M7-9	挑線板	upper thread take-up	0	0	1	
	10	M7-10	矽油盒	oil box	1	1	1	
B	11	M7-11	油氈墊架	oil felt	1	1	1	
	12	M7-12	過線架	thread guide	1	1	1	
	13	M7-13	矽油盒膠墊	oil box washer	1	1	1	
	14	M7-14	油氈墊	oil felt	1	1	1	
	15	M7-15	攔線板	tension spring	1	1	1	
	16	M7-16	攔線板架	thread controler disc holder	1	1	1	
	17	M7-17	彈簧	spring	1	1	1	
	18	M7-18	螺釘	screw	1	1	1	
	19	M7-19	針板座鍵	throat plate positionign rod	2	2	2	
C	20	M7-20	針板座	throat plate barcket	1	1	1	
	21	M7-21	過線架	thread mark guide	1	1	1	
	22	M7-22	護針擋	teat needle guard	1	1	1	
	23	M7-23	調壓簧	thread tension spring	1	2	2	
	24	4M7-24	前護針擋	front needle guard	0	1	0	
		3M7-24	前護針擋	front needle guard	1	0	0	
		5M7-24	前護針擋	front needle guard	0	0	1	
	25	4M7-25	針板	throat plate	0	1	0	
		3M7-25	針板	throat plate	1	0	0	
		5M7-25	針板	throat plate	0	0	1	
D	26	M7-26A	過線板	thread guide	0	1	1	
	27	5M7-27	過線	thread guide	1	1	1	
	28	5M7-28	護針I	needle guard I	0	0	1	
	29	5M7-29	護針擋II	needle guide II	0	0	1	
	30	M7-30	護針擋座	needle guard barcket	1	1	0	
		5M7-30	護針擋座	needle guard barcket	0	0	1	
	31	M7-31	擋板	snap plate	1	1	1	
	32	M7-32	擋板墊	snap plate washer	1	1	1	
	33	M7-33	過線板	thread guide	1	1	1	
E	1	S045	螺釘	screw	2	2	2	
	2	S035	針板螺釘	throat plate screw	2	2	2	
	3	S016	前護針板螺釘	fornt needle snap screw	1	1	1	
	4	S061	針板座螺	throat plat barcket screw	2	2	2	

1

2

3

4

5

<b>SIRUBA</b> PARTS LIST	Series	Parts Group	Subclass Remark	Page
	<b>500Qe</b>	<b>08</b>		1 / 1
				Date
				2024/07/30

序號 Ref.No	零件編號 Part No.	名稱	Name	數量 Amt. Req.		
				3	4	5
10	S027	調線刻度板螺釘	thread amount regulating plate	2	2	2
11	S037	調線刻度板螺釘	screw	1	1	1
12	S014	彎針過線螺釘	looper shaft thread guide screw	2	2	2
13	W08	彎針過線墊圈	looper shaft thread guide washer	2	2	2
14	S097	上彎針軸導板螺釘	upper looper shaft thread plate screw	1	1	1
15	S062	上彎針軸導板螺釘	upper looper shaft thread plate screw	1	1	1
16	S012	導架座擋板螺釘	thread holder snap plate screw	1	1	1
17	S095	導線座擋板螺釘	thread holder snap plate screw	1	1	1
18	S015	上彎針緊固螺釘	upper looper set screw	1	1	1

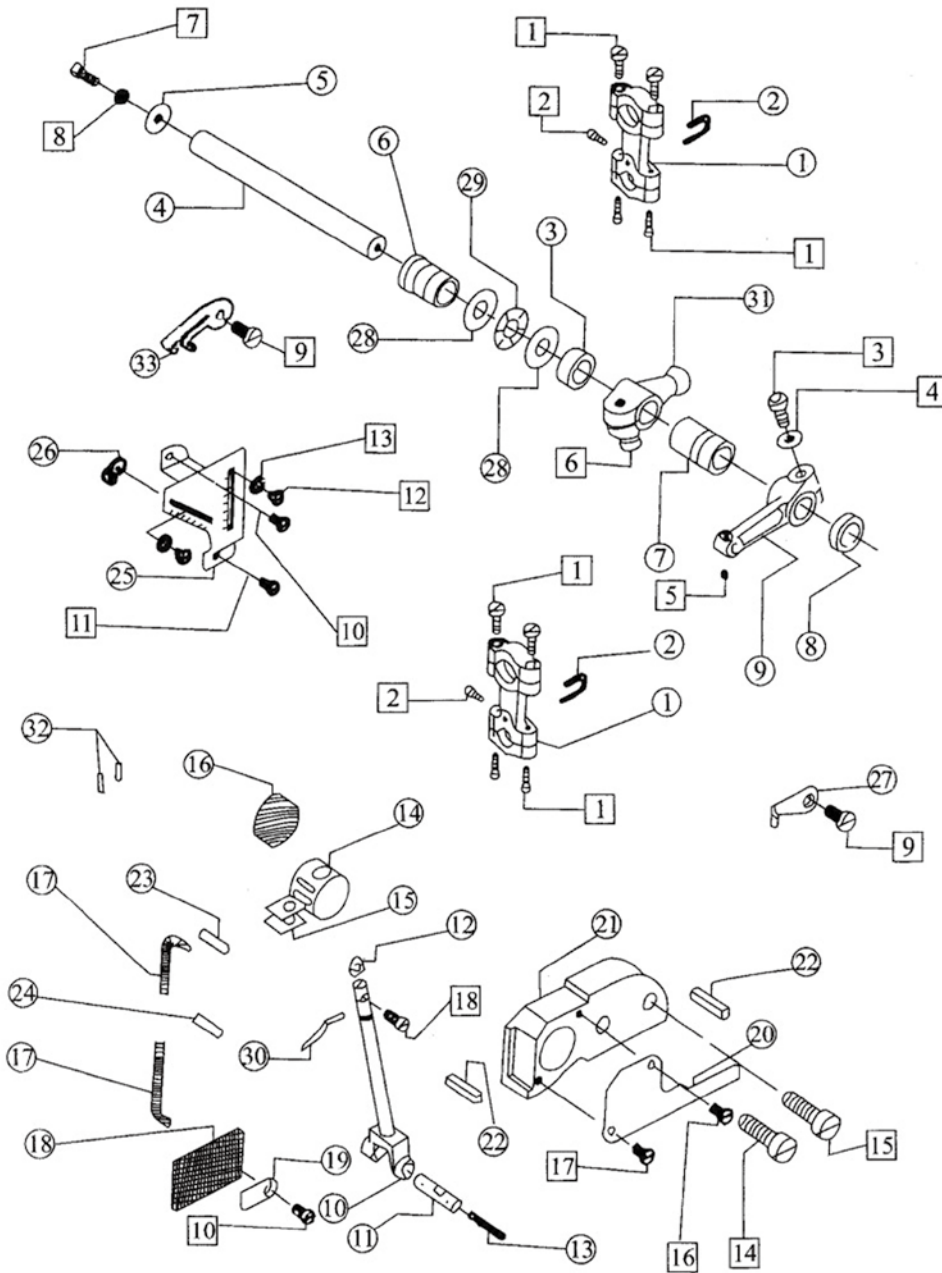
A

B

C

D

E



1

2

3

4

5

SiRUBA SEQUENCE LIST		Series		Parts Group	Subclass Remark			Page		
		500Qe		08				1 / 1		
								Date		
								2024/07/30		
序號 Ref.No	零件編號 Part No.	名稱	Name	數量 Amt. Req.						
				3	4	5				
A	1	M8-1	彎針連桿	looper link	2	2	2			
	2	M8-2	彎針連桿擺架	looper link holder	2	2	2			
	3	M8-3	厚墊圈	thickness washer	0	1	0			
		5M8-3	厚墊圈	thickness washer	1	0	1			
	4	M8-4	上彎針軸	upper looper shaft	1	1	1			
	5	M8-5	大墊圈	big washer	1	1	1			
	6	M8-6	上彎針軸後套筒	upper looper shaft rear bashing	1	1	1			
	7	M8-7	上彎針軸前套筒	upper looper shaft foot bushing	1	1	1			
	8	M8-8	上彎針軸油封	upper looper shaft oil seal	1	1	1			
	9	M8-9	上彎針軸曲柄	upper looper shaft crant	1	1	1			
B	10	M8-10	上彎針搖桿	upper looper shaft bar	1	1	1			
	11	M8-11	搖桿銷	connecting rod shaft pin	1	1	1			
	12	M8-12	搖桿卡片	washer	1	1	1			
	13	M8-13	油線	oil wick	1	1	1			
	14	M8-14	上彎針軸導塊	upper looper slide bar slidel block	1	1	1			
	15	M8-15	油氈	oil felt	2	2	2			
	16	M8-16	油氈	oil felt	1	1	1			
	17	M8-17	油線	oil wick	2	2	2			
	18	M8-18	濾油板	acreen oil plate	1	1	1			
	19	M8-19	壓板	felt plate	1	1	1			
C	20	M8-20	導架座擋板	thread hlder snap plate	1	1	1			
	21	M8-21	上彎針軸導架座	upper looper shaft slide bar bracket	1	1	1			
	22	M8-22	油封	oil seal	2	2	2			
	23	M8-23	油管	oil tube	1	1	1			
	24	M8-24	油管	oil tube	1	1	1			
	25	M8-25	調線刻度板	thread amount regulating plate	1	1	1			
	26	M8-26	上彎針過線	upper looper thread guide	1	1	1			
	27	M8-27	上彎針軸過線板	upper looper shaft thread plate	1	1	1			
	28	M8-28	軸承擋板	shaft bearing guaid	2	2	2			
	29	M8-29	滾針端面軸承	lower looper holder copper	1	1	1			
D	30	M8-30	彎針	looper	1	1	1			
	31	M8-31	上彎針擺動曲柄	upper looper crank bearing	0	1	0			
		5M8-31	上彎針擺動曲柄	upper looper crank bearing	1	0	1			
	32	M8-32	穿線管	threading rube	2	2	2			
	33	M8-33	兩孔過線板	two for thread guide	1	1	1			
	E	1	S074	連桿螺釘	shaft screw	8	8	8		
		2	S0384	彎針連桿止動螺釘	scre	2	2	2		
		3	S058	上彎針軸曲柄螺釘	upper looper shaft crank screw	1	1	1		
		4	W12	上彎針軸曲柄墊圈	upper looper shaft washer	1	1	1		
		5	S009	上彎針軸曲柄絲	link pin set screw	1	1	1		
6		S101	擺動曲柄螺釘	nexagon socket screw	1	1	1			
7		S036	上彎針軸螺釘	upper looper shaft screw	1	1	1			
8		W04	彈簧墊圈	wather	1	1	1			
9		S032	上彎針軸過線架螺釘	upper looper shaft thread guide screw	2	2	2			

1

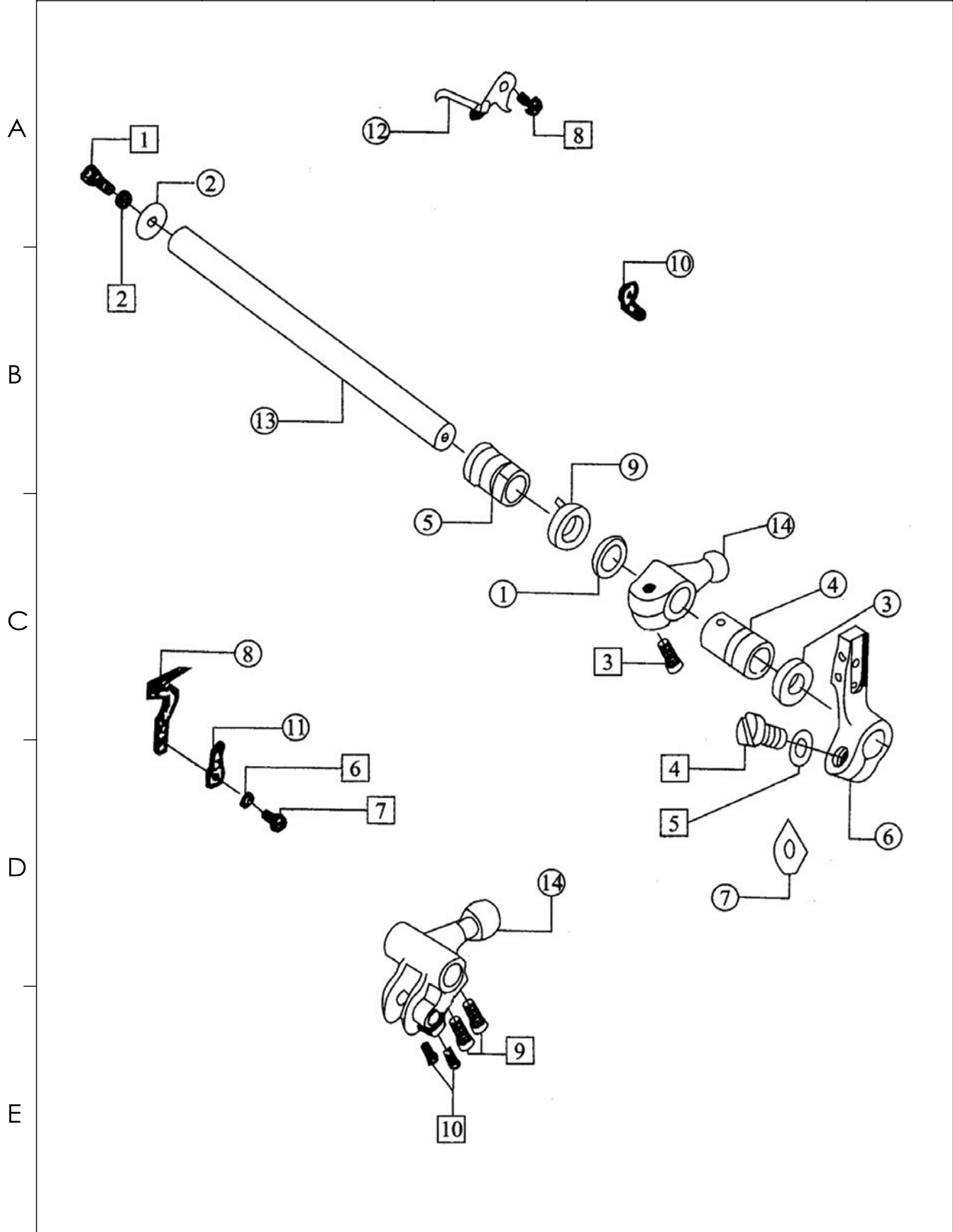
2

3

4

5

<b>SIRUBA</b> PARTS LIST	Series	Parts Group	Subclass Remark	Page
	<b>500Qe</b>	<b>09</b>		1 / 1
				Date
				2024/07/30





<b>SIRUBA</b> PARTS LIST	Series	Parts Group	Subclass Remark	Page
	<b>500Qe</b>	<b>10</b>		1 / 1
				Date
				2024/07/30

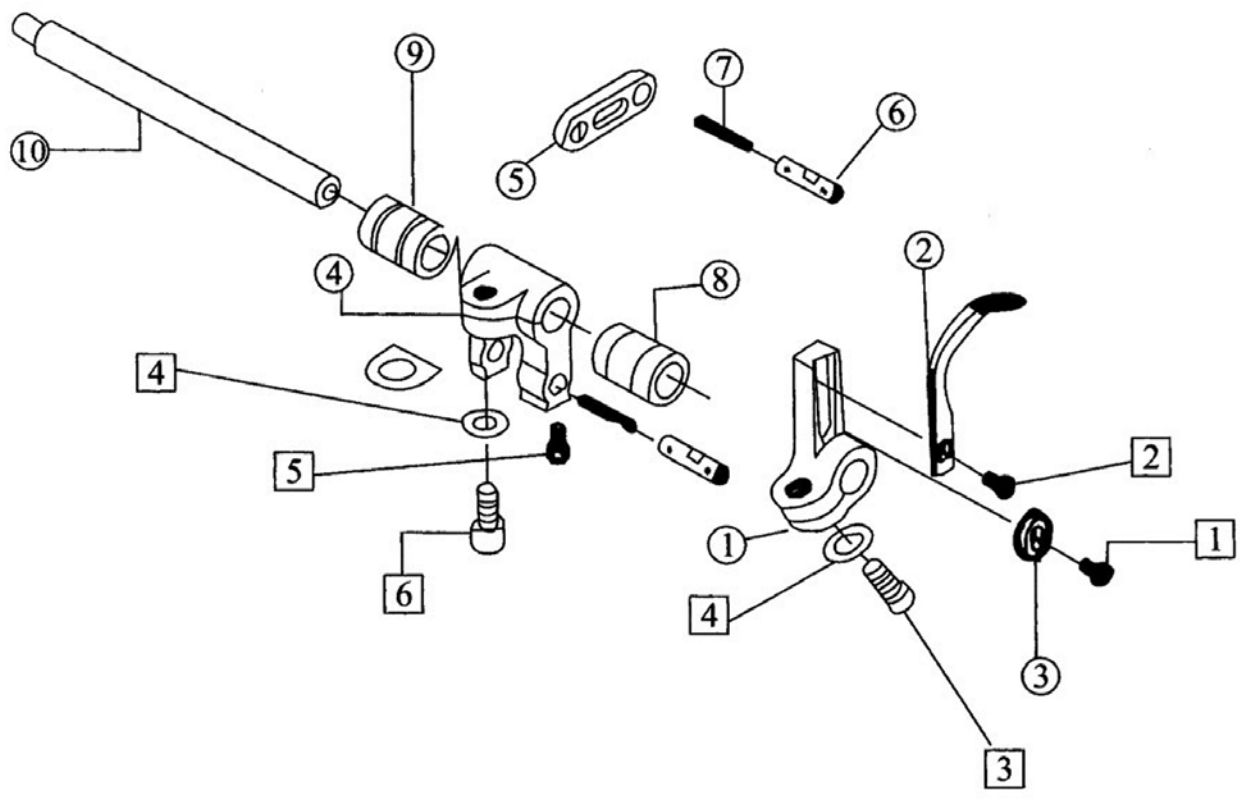
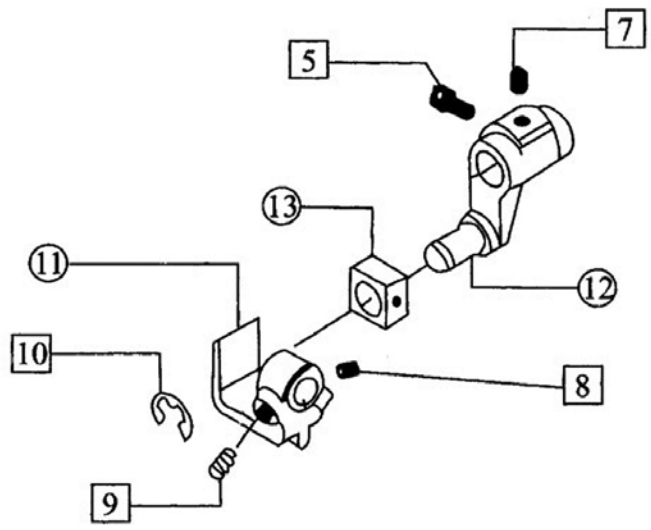
A

B

C

D

E







<b>SIRUBA</b> SEQUENCE LIST	Series	Parts Group	Subclass Remark	Page
	<b>500Qe</b>	<b>11</b>		1 / 1
				Date
				2024/07/30

序號 Ref.No	零件編號 Part No.	名稱	Name	數量 Amt. Req.			
				3	4	5	
A	1	5M11-1	橫軸連桿	bearing snap uing screw	0	0	1
	2	5M11-2	連桿滾針軸示	bfeat guide camtop	0	0	1
	3	5M11-3	軸承擋圈	shaft snap crank screw	0	0	1
	4	5M11-4	曲柄銷	shaft snap washer	0	0	1
	5	5M11-5	橫軸曲柄	crank adjusting pin wather	0	0	1
	6	5M11-6	橫軸曲柄軸	crank adjusting pin nut	0	0	1
	7	5M11-7	橫軸右套筒	holder finger nut	0	0	1
	8	5M11-8	橫軸左套筒	holder finger	0	0	1
	9	5M11-9	油封	thread guide plate screw	0	0	1
	10	5M11-10	打線凸輪	thread guide plate screw	0	0	1
B	11	5M11-11	導線板	thread guide finger set screw	0	0	1
	12	5M11-12	過線板	thread guide for 2-thread screw	0	0	2
	13	5M11-13	導線架	washer	0	0	1
	14	5M11-14	波形墊圈	thread guide hook screw	0	0	1
	15	5M11-15	限位板		0	0	1
	16	5M11-16	過線環	thread guide hook	0	0	1
	17	5M11-17	二眼過線板	2-thread thread guide	0	0	1
	18	5M11-18	後導線板	rear thread guide finger set screw	0	0	1
C	19	5M11-19	導線管套	thread guide tube bushing	0	0	2
	20	5M11-20	過線管	thread guide tube	0	0	1
	21	5M11-21	過線管壓板	thread guide tube olamp	0	0	2
	22	5M11-22	壓線器架	thread tension plate holder	0	0	1
	23	5M11-23	夾線挺	holder spool	0	0	1
	24	5M11-24	夾線片	holder spool	0	0	2
	25	5M11-25	夾線簧	holder spool spring	0	0	1
D	26	5M11-26	調壓螺母軸承擋圈螺釘	presser nut	0	0	1
	1	S002	軸承擋圈螺釘	bearing snap ring scrwe	0	0	2
	2	S009	打線凸輪頂絲	cam set screw	0	0	2
	3	S101	橫軸曲柄螺釘	crank set screw	0	0	1
	4	W12	橫軸曲柄墊圈	crank washer	0	0	1
	5	W06	曲柄調整銷墊圈	crank adjusting pin wather	0	0	1
	6	N02	曲柄調整螺母	crank adjusting pin nut	0	0	1
	7	N03	夾線器架螺母	thread tension scrwe nut	0	0	1
	8	S032	夾線器架螺釘	thread tension screw	0	0	1
	9	S003	過線板螺釘	thread guide plate screw	0	0	2
E	10	S017	導線板螺釘	thread guide plate screw	0	0	1
	11	S038	導線架固定螺釘	thread guide finger seet screw	0	0	1
	12	S027	二眼過線板螺釘	thread guide for 2-thread screw	0	0	3
	13	W11	墊圈	washer	0	0	1
	14	S020	進線環螺釘	thread guide hook screw	0	0	1

1

2

3

4

5



SiRUBA SEQUENCE LIST		Series		Parts Group	Subclass Remark			Page
		500Qe		12				1 / 1
								Date
								2024/07/30
序號 Ref.No	零件編號 Part No.	名稱	Name	數量 Amt. Req.				
				3	4	5		
A	1	M12-1	送布調節器桿	stich length reglating shaft	1	1	1	
	2	M12-2	針距調節簧	spring	1	1	1	
	3	M12-3	送布調節器油封	oil washer	1	1	1	
	4	M12-4	針距調節凸輪組件	stitch length regulating cam asm	1	1	1	
	5	M12-5	針距調節滑塊	stitch length regulating block	1	1	1	
	6	M12-6	針距調節滑塊壓簧	stitch length regulating block spring	2	2	2	
	7	M12-7	針距凸輪	stitch length cam	1	1	1	
	8	M12-8	針距調節壓板	stitch length regulating plate	1	1	1	
	9	M12-9	送布凸輪	feed lingsh cam	1	1	1	
	10	M12-10	送布凸輪簧	feed cam spring	1	1	1	
	11	M12-11	送布凸輪座銷	feed cam pin	1	1	1	
B	12	M12-12	送布連桿	feed link	1	1	1	
	13	M12-13	滾動軸承	feed rod rolling pin bearing	1	1	1	
	14	M12-14	送布曲柄	feed crank	1	1	1	
	15	M12-15	差動連桿	differential link	1	1	1	
	16	M12-16	差動曲柄	dofferential crank	1	1	1	
	17	M12-17	銷子	pin	1	1	1	
	18	M12-18	差動軸套筒	differential shaft bearing	1	1	1	
	19	M12-19	油封	oil seal	1	1	1	
	20	M12-20	擋圈	snap ring	1	1	1	
	21	M12-21	彈簧	spring	1	1	1	
C	22	M12-22	擋圈	washer	1	1	1	
	23	M12-23	調節滑塊	regalating block	1	1	1	
	24	M12-24	墊圈	washer	2	2	2	
	25	M12-25	送布凸輪座	feed cam	1	1	0	
	26	M12-26	墊圈	washer	1	1	1	
	27	M12-27	差動調節架	differential regulating holder	1	1	1	
	28	M12-28	調節螺釘	regulating screw	1	1	1	
	29	M12-29	卡簧	regulating screw spring	1	1	1	
	30	M12-30	差動調節桿	differential rigulating link	1	1	1	
	31	SM12-31	曲柄連桿凸輪	crank link cam	0	0	1	
D	1	S096	差動迳杆螺釘	differential link screw	1	1	1	
	2	S101	差動曲柄螺釘	differential crank screw	2	2	2	
	3	S028	擋圈螺釘	snap ring screw	1	1	1	
	4	W15	墊圈	washer	1	1	1	
	5	S01	墊圈	washer	2	2	2	
	6	S037	差動調節桿螺釘	differential positon screw	1	1	1	
	7	S012	卡簧螺釘	spring screw	1	1	1	
	8	S034	差動調節架緊固螺釘	differential set screw	1	1	1	
	9	S079	螺釘	screw	1	1	1	
	10	S027	差動調節螺釘	differential positop screw	1	1	1	
E	11	S032	差動調節架螺釘	differential positop screw	1	1	1	
	12	S043	針距調節齒輪螺釘	stith length	4	4	4	
	13	S008	送布凸輪調節螺釘	feed cam regulating screw	1	1	1	
	14	S011	送布凸輪螺釘	feed cam screw	1	1	1	
	15	S040	螺釘	screw	1	1	1	
	16	S036	針距調節壓板螺釘	stitch length screw	1	1	1	

1

2

3

4

5

<b>SIRUBA</b> PARTS LIST	Series	Parts Group	Subclass Remark	Page
	<b>500Qe</b>	<b>13</b>		1 / 1
				Date
				2024/07/30

序號 Ref.No	零件編號 Part No.	名稱	Name	數量 Amt. Req.		
				3	4	5
8	S012	左曲柄螺釘	crank screw (left)	5	5	5
9	S069	曲柄滑動蓋螺釘	crank slide block cover screw	2	2	2
10	S034	牙叉叉塊螺釘II	tooth rorks screw	1	1	1
11	S046	牙叉叉塊螺釘I	tooth rorks screw	4	4	4
12	S031	螺釘	screw	1	1	1
13	N02	右送布曲柄銷螺母	reed crank pin shaft nut	1	1	1

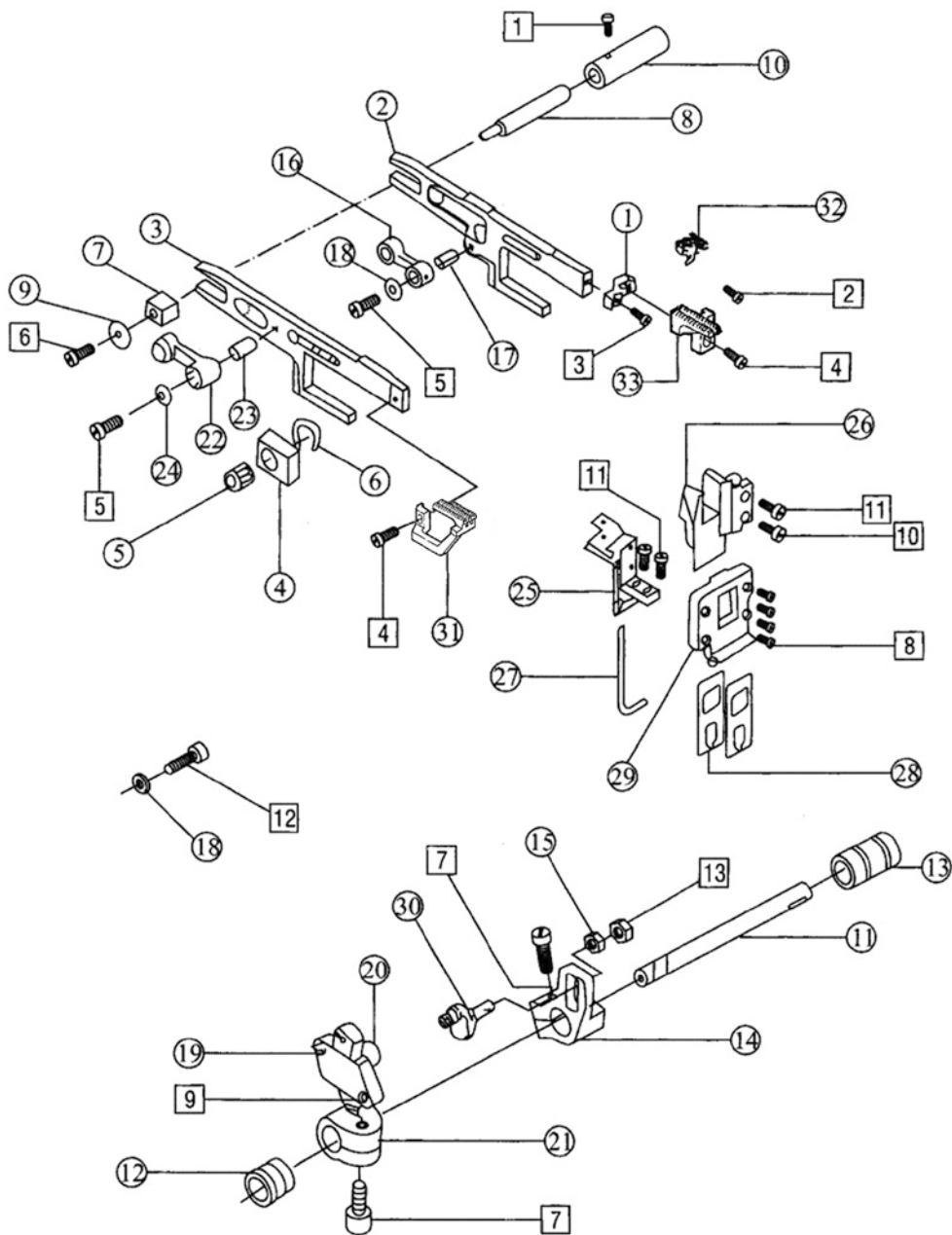
A

B

C

D

E



1

2

3

4

5

SiRUBA SEQUENCE LIST		Series		Parts Group	Subclass Remark			Page
		500Qe		13				1 / 1
								Date
								2024/07/30
序號 Ref.No	零件編號 Part No.	名稱	Name	數量 Amt. Req.				
				3	4	5		
A	1	M13-1	牙連接板	doy link plate	1	1	1	
	2	M13-2	送布牙架	feed doy holder	1	1	1	
	3	M13-3	差動牙架	differential feed doy holear	1	1	1	
	4	M13-4	抬牙滑塊	feed doy lift slide block	1	1	1	
	5	M13-5	抬牙滑塊滾針軸承	feed doy lift slide block shaft bearing	1	1	1	
	6	M13-6	卡簧	snap ring	1	1	1	
	7	M13-7	差動送布滑塊	differential feed slide block	1	1	1	
	8	M13-8	滑塊偏心軸	slide block eccentric share	1	1	1	
	9	M13-9	差動送布滑塊偏心墊	direrential feed slide block eccentic washer	1	1	1	
	10	M13-10	滑塊偏心軸套筒	slide block eccentric shaft bushing	1	1	1	
B	11	M13-11	送布軸	feed shaft	1	1	1	
	12	M13-12	送布軸左套筒	feed shaft bashing (left)	1	1	1	
	13	M13-13	送布軸右套筒	feed shaft bashing (right)	1	1	1	
	14	M13-14	送布調整曲柄	feed regulating crank	1	1	1	
	15	M13-15	墊圈	washer	1	1	1	
	16	M13-16	送布牙架連桿	feed doy holder link	1	1	1	
	17	M13-17	送布牙架桿套	feed doy holer link bashing	1	1	1	
	18	M13-18	送布牙架連桿套墊圈	differetial feed doy holder link bashing	2	2	2	
C	19	M13-19	曲柄滑塊蓋板	crank slide block cover	1	1	1	
	20	M13-20	曲柄滑塊	crank slide block	1	1	1	
	21	M13-21	差動牙調節曲柄	feed regulating crank	1	1	1	
	22	M13-22	差動牙架連桿	differential feed doy holder link	1	1	1	
	23	M13-23	差動牙架連桿套	differential feed doy holder link bushing	1	1	1	
	24	M13-24	差動牙架連桿套墊圈	pifferential feed doy holder link bushing washer	2	2	2	
	25	M13-25	擋油板	screw oil plate	1	1	1	
	26	M13-26	牙架導軌	feed doy carrier connection rod	1	1	1	
	27	M13-27	密封圈	scaling connecting ring	1	1	1	
	28	M13-28	活動油封	adjustable oil seal	2	2	2	
D	29	M13-29	密封導架	scaling connecting rod	1	1	1	
	30	M13-30	送布牙連桿偏心軸	feed doy link ecentric shaft	1	1	0	
		5M13-30	送布牙連桿偏心軸	feed doy link ecentric shaft	0	0	1	
	31	M13-31	差動牙	differential dog	1	1	0	
		5M13-31	差動牙	differential dog	0	0	1	
	32	M13-32	輔送布牙	main feed dog	1	1	0	
		5M13-32	輔送布牙	main feed dog	0	0	1	
	33	M13-33	主送布牙	main feed dog	1	1	0	
		5M13-33	主送布牙	main feed dog	0	0	1	
	E	1	S028	調牙套筒螺釘	regulating bushing	1	1	1
2		S005	輔助調牙套筒螺釘	feed dog bushing screw	1	1	1	
3		S024	牙架接板螺釘	screw	1	1	1	
4		S100	主送布牙螺釘	main fed dog screw	2	2	2	
5		S029	左右牙叉連桿螺釘	dog hloder link	2	2	2	
6		S006	抬牙布曲柄螺釘	feed dog lift slide block screw	1	1	1	
7		S101	右送布曲柄螺釘	feed shaft crank screw (right)	2	2	2	

1

2

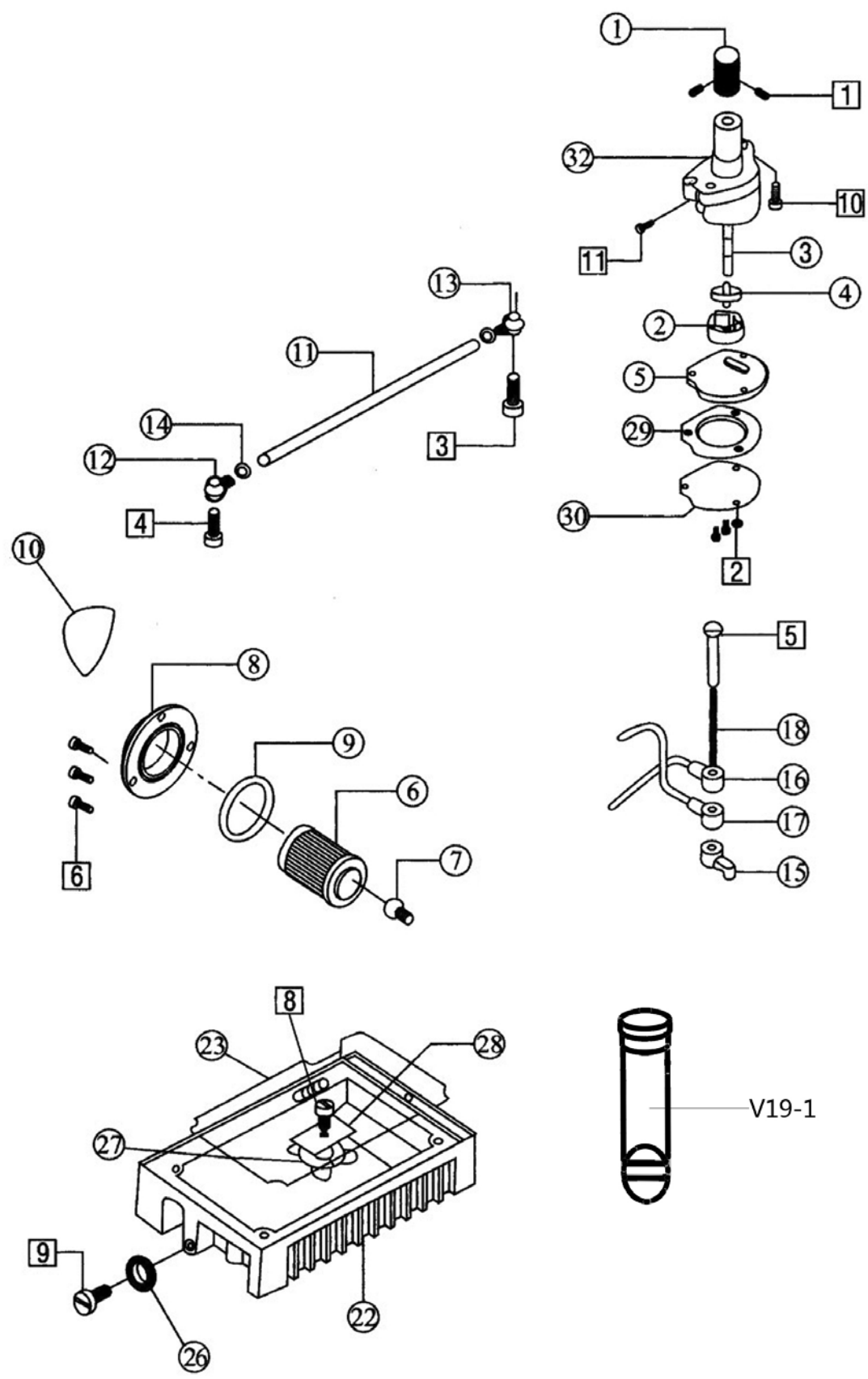
3

4

5

<b>SIRUBA</b> PARTS LIST	Series	Parts Group	Subclass Remark	Page
	<b>500Qe</b>	<b>14</b>		1 / 1
				Date
				2024/07/30

A  
B  
C  
D  
E



1 2 3 4 5

<b>SIRUBA</b> SEQUENCE LIST	Series	Parts Group	Subclass Remark	Page
	<b>500Qe</b>	<b>14</b>		1 / 1
				Date
				2024/07/30

序號 Ref.No	零件編號 Part No.	名稱	Name	數量 Amt. Req.		
				3	4	5
A 1	M14-1	油泵蝸輪	oil pump worm gear	1	1	1
A 2	M14-2	滑塊泵五星齒輪套	oil pump rotator bushing	1	1	1
A 3	M14-3	油泵齒輪長軸	oil pump rptatpr shaft	1	1	1
A 4	M14-4	油泵五星齒輪	oil pump rotator	1	1	1
A 5	M14-5	油泵罩板	oil pump cover plate	1	1	1
A 6	M1 -6	濾油器	oil cleaner	1	1	1
A 8	M14-8	濾油器蓋	oil clerner cover	1	1	1
A 9	M14-9	濾油器蓋密封圈	oil clerner cover seal ring	1	1	1
A 10	M14-10	潤滑提示	ingicaing plate	1	1	1
B 11	M14-11	油管	oil tube	1	1	1
B 12	M14-12	油管接頭I	oil tube joint	1	1	1
B 13	M14-13	油管接頭II	oil tube joint	1	1	1
B 14	M14-14	油管卡簧	oil tube shap ring	4	4	4
B 15	M14-15	潤滑套	lubrcate bushing	1	1	1
B 16	M14-16	上配油器	upper screen	1	1	1
B 17	M14-17	下配油器	lower screen	1	1	1
B 18	M14-18	調節銷	regulating pin	1	1	1
C 22	M14-22	油盤	oil pan	1	1	1
C 23	M14-23	油盤墊圈	oil pan washer	1	1	1
C 26	M14-26	堵油墊圈	oil seal	1	1	1
C 27	M14-27	油盤磁鐵	oil pan magnet	1	1	1
C 28	M14-28	濾油盤磁鐵蓋	oil pan magnet cover	1	1	1
C 29	M14-29	濃油網固定架	oil screen holder	1	1	1
C 30	M14-30	濾油網	oil screen felt	1	1	1
C 32	M14-32	油泵體組件	oil pump asm	1	1	1
D 1	S057	油泵蝸輪螺釘	oil pamp worm gear screw	2	2	2
D 2	S024	濾油網螺釘	oil cleaner screw	3	3	3
D 3	S086	油管接頭II螺釘	oil tube joint screw	1	1	1
D 4	S063	油管接頭I螺釘	oil tube joint screw	1	1	1
D 5	S052	配油器螺釘	oil screen screw	1	1	1
D 6	S039	濾油器蓋螺釘	oil screen cover screw	3	3	3
D 7	S042	油量顯示器支架螺釘	oil boy finger screw	2	2	2
D 8	S037	油盤磁鐵蓋螺釘	oil pan magnet cover screw	1	1	1
D 9	S066	油盤放油螺釘	oil pan oil screw	1	1	1
D 10	S048	油泵螺釘	oil pump screw	1	1	1
D 11	S065	油泵體螺釘	oil pumps asm svrew	1	1	1
E						

1

2

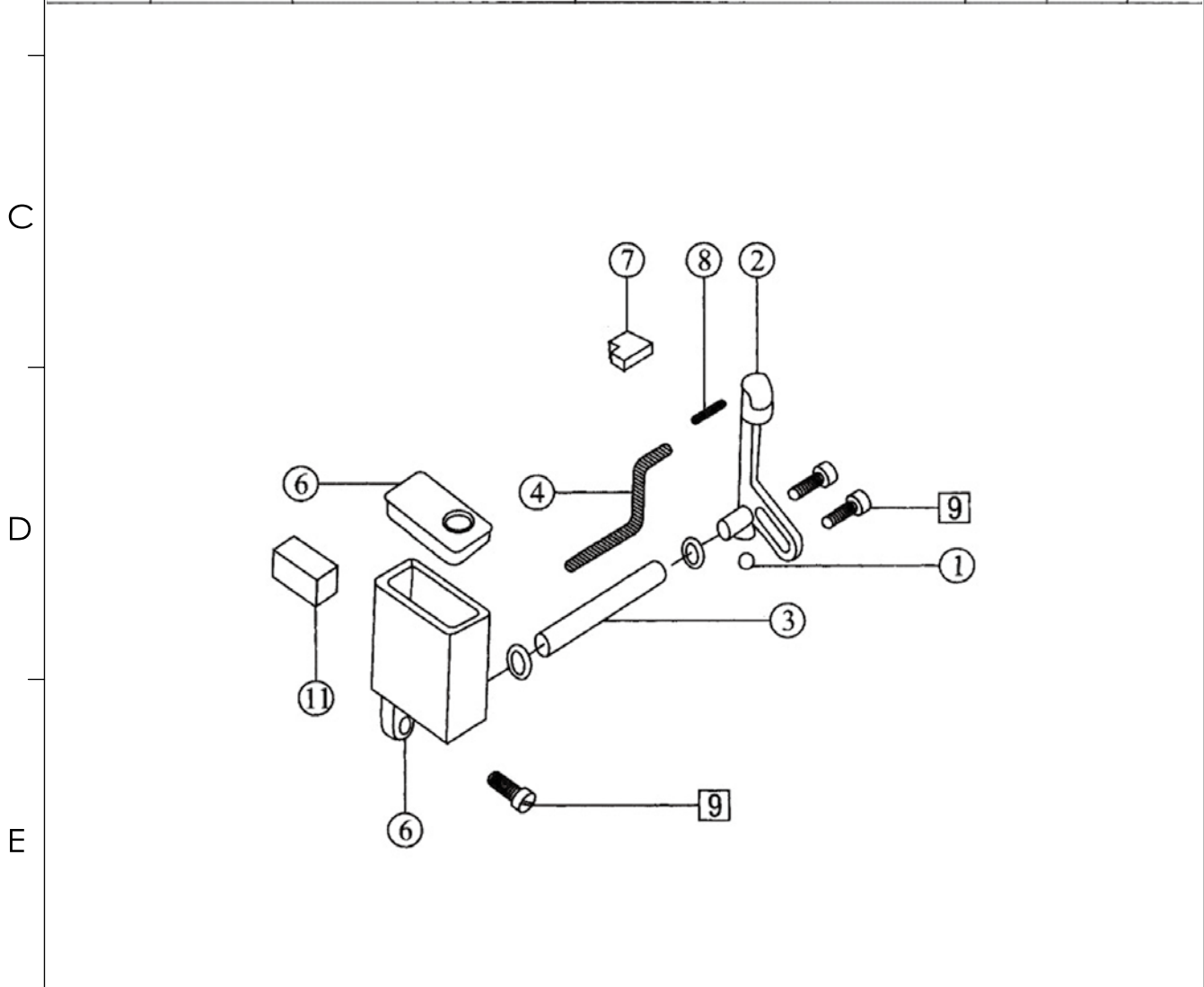
3

4

5

<b>SIRUBA</b> PARTS LIST & SEQUENCE LIST	Series	Parts Group	Subclass Remark	Page
	<b>500Qe</b>	<b>15</b>		1 / 1
				Date
				2024/07/30

序號 Ref.No	零件編號 Part No.	名稱	Name	數量 Amt. Req.		
				3	4	5
1	M15-1	油堵	oil seal	1	1	1
A	2	M15-2	機針冷卻器	1	1	0
		5M15-2	機針冷卻器	0	0	1
3	M15-3	油管	oil tube bracker	1	1	1
4	M15-4	矽油冷卻油線	oil wick	1	1	1
5	M15-5	下矽油盒蓋	lower oil cover	1	1	1
6	M15-6	下矽油盒	lower oil box	1	1	1
	7	M15-7	油棉	1	1	0
		5M15-7	油棉	0	0	1
8	M15-8	油線	oil wick	1	1	1
B	9	M15-9	送料支架	1	1	1
	10	M15-10	鉸鍊板	1	1	1
	11	M15-11	矽油棉塊	1	1	1



1                      2                      3                      4                      5



<b>SIRUBA</b> SEQUENCE LIST	Series	Parts Group	Subclass Remark	Page
	<b>500Qe</b>	<b>16</b>		1 / 1
				Date 2024/07/30

序號 Ref.No	零件編號 Part No.	名稱	Name	數量 Amt. Req.		
				3	4	5
A 1	M16-1	上管	upper thread column	1	1	1
A 2	M16-2	下管	lower thread column	1	1	1
A 3	M16-3	套	bushing	1	1	1
A 4	M16-4	長托線架	long thread spool tray bracket	1	1	1
A 5	M16-5	導線環	thread guide hook	4	4	4
A 6	M16-6	線托棒	spool pin	3	4	5
A 7	M16-7	線盤	spool tray	3	4	5
A 8	M16-8	線圈定位套	centering device	3	4	5
A 9	M16-9	棒架	clamp plate	1	1	1
B 10	M16-10	線盤墊	spool tray cushion	3	4	5
B 11	M16-11	導線棒	thread guide connecting bar	1	1	1
B 12	M16-12	導紗接頭	thread guide joint	1	1	1
B 13	M16-13	固定板	thread stand holder	1	1	1
B 14	M16-14	導線棒	thread guide bar	1	1	1
B 15	M16-15	大導線棒	thread spool tray bracket	1	1	1
B 16	M16-16	過線板	thread guide plate	1	1	1
B 17	M16-17	托線架	thread spool tray bracket	1	1	1
B 18	M16-18	過線環	thread guide hook	3	3	3
C 19	M16-19	棒帽	rubber seal	1	1	1
D 1	S088	導線環螺釘	thread guide hook screw	4	4	4
D 2	N06	導線環螺母	thread guide hook screw	4	4	4
D 3	W02	導線環墊圈	thread guide washer	4	4	4
D 4	S075	棒架螺釘	clamp plate screw	3	3	3
D 5	S051	棒架螺釘	spool holder screw	1	1	1
D 6	N04	螺母	nut	8	8	8
D 7	W16	下管墊圈	lower washer	2	2	2
D 8	N05	螺母	nut	1	1	1
D 9	W05	墊圈	washer	4	4	4
D 10	S087	固定板螺釘	thread stand holder screw	1	1	1
D 11	S089	固定板連接螺釘	thread stand holder join screw	1	1	1
E						

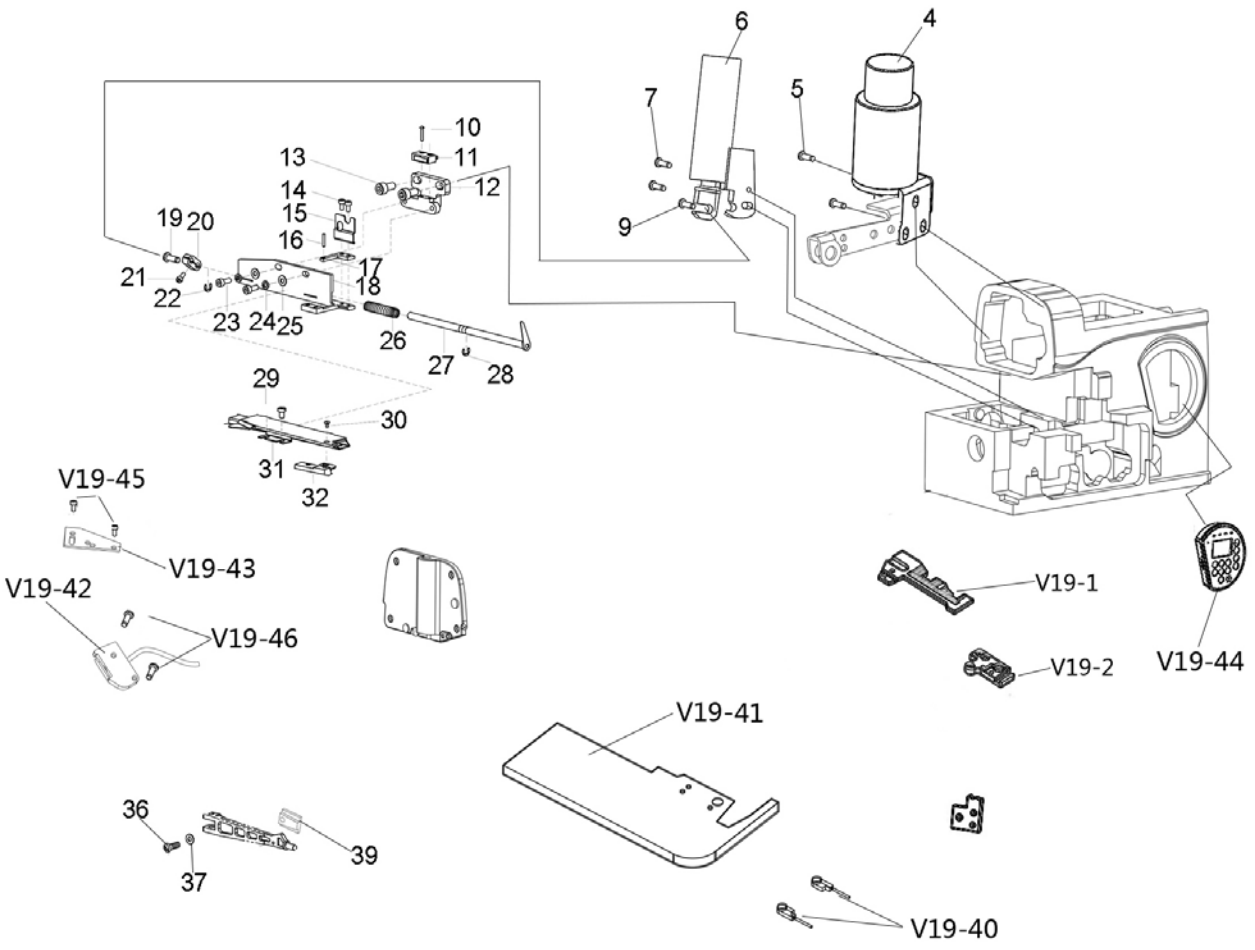
A

B

C

D

E





<b>SIRUBA</b> PARTS LIST & SEQUENCE LIST	Series	Parts Group	Subclass Remark	Page
	<b>500Qe</b>	<b>18</b>		1 / 1
				Date
				2024/07/30

序號 Ref.No	零件編號 Part No.	名稱	Name	數量 Amt. Req.		
				3	4	5
1	M17-1	機頭托盤	machine head plate	1	1	1
2	M17-2	減震墊組件	head shockproof cushion	3	3	3
3	M17-3	螺釘M8x55	screw	4	4	4
4	M17-4	托盤螺釘固定頭	screw	4	4	4
5	M17-5	大墊圈	big washer	12	12	12
6	M17-6	托盤連接套	plate doyl link bushing	4	4	4
7	M17-7	排料槽座	row material trolgh bracket	1	1	1
8	M17-8	排料槽(1)	row material trough (1)	1	1	1
9	M17-9	排料槽(2)	row material trough (2)	1	1	1
10	M17-10	機頭減震墊	head shockproof cushion	1	1	1
1	S076	排料槽座螺釘	row material seat screw	3	3	3
2	W13	排料槽墊圈	row material washer	4	4	4
3	S077	排料槽螺釘	row material screw	4	4	4

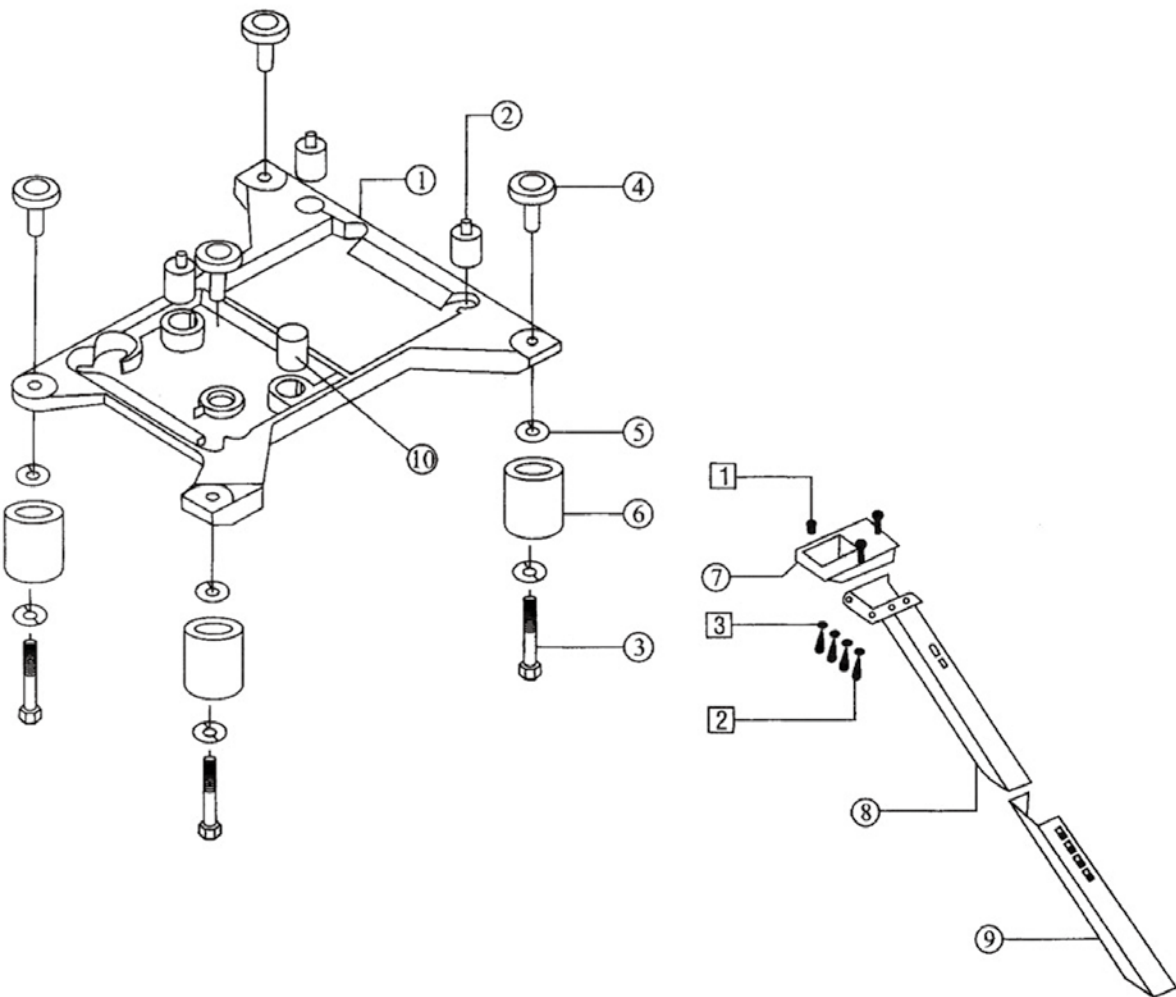
A

B

C

D

E



1

2

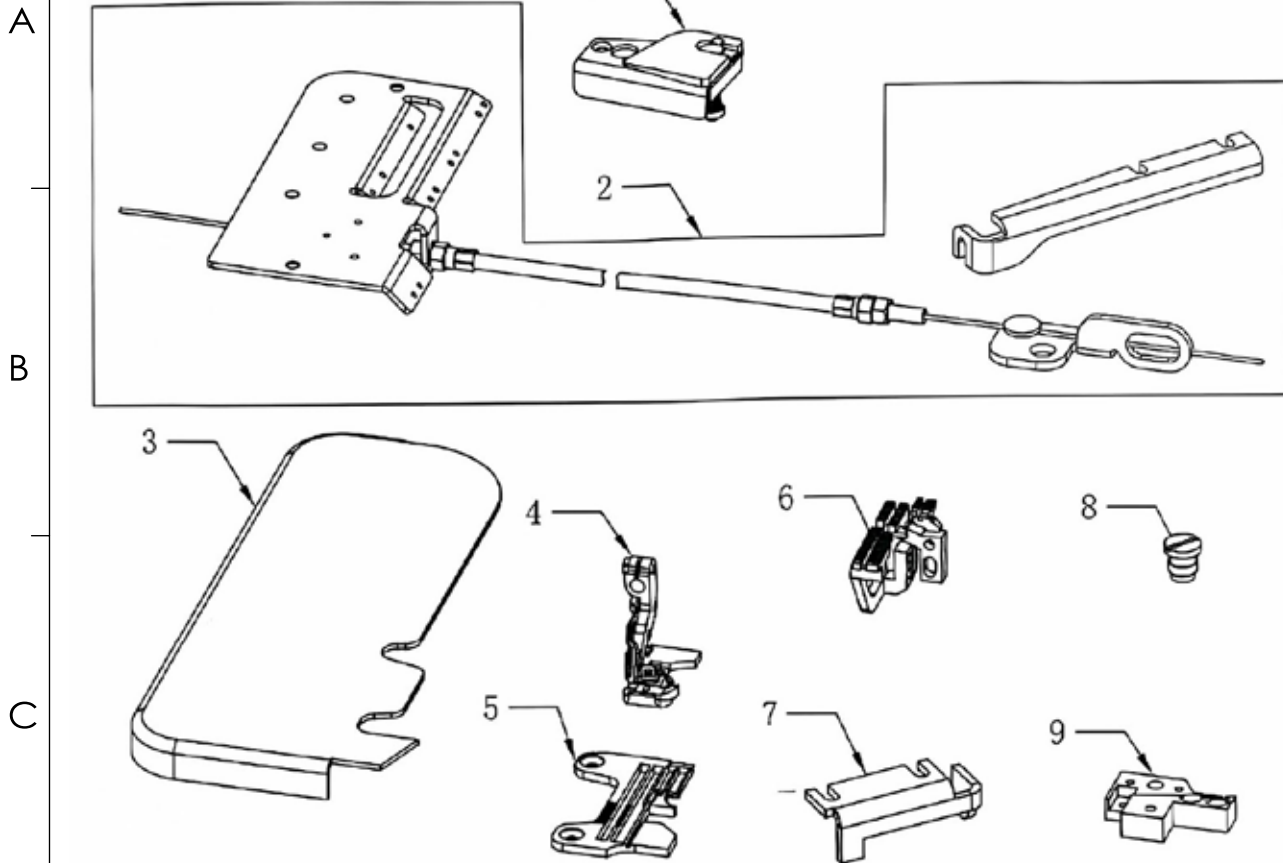
3

4

5

<b>SIRUBA</b> PARTS LIST	Series	Parts Group	Subclass Remark	Page
	<b>500Qe</b>	<b>19</b>		1 / 1
				Date
				2024/12/2

## BK倒回缝装置专用零件 BK device parts



序号 Ref. No	零件编号 Part. No	名称	Name	数量 Amt. Req
1	V19S-BK1	倒回缝针板刀组件	needle plate knife assembly	1
2	V19S-BK2	倒回缝刀架组件	knife frame components	1
3	V19S-BK3	缝台组件	cloth plate assembly	1
4	V19S-BK4	压脚组件	presser foot assembly	1
5	V19S-BK5	针板	needle plate	1
6	V19S-BK6	送布牙组件	feed dog assembly	1
7	V19S-BK7	角板	stopper	1
8	V19S-BK8	螺钉	screw	1
9	V19S-BK9	倒回缝针板座	BK needle plate barcket	1



<b>SIRUBA</b> SEQUENCE LIST	Series	Parts Group	Subclass Remark	Page
	<b>500Qe</b>	<b>20</b>		1 / 1
				Date
				2024/12/2

序號 Ref.No	零件編號 Part No.	名稱	Name	數量 Amt. Req.		
				3	4	5
1	M18-1	機罩	machine head cover	1	1	1
2	M18-2	油壺/1000cc	oil can/100cc	1	1	1
3	M18-3	注油壺	notes oil	1	1	1
4	M18-4	漏斗	tundish	1	1	1
5	M18-5	油壺/50cc	oil can/50cc	1	1	1
6	M18-6	扳手(6mm)	spanner	1	1	1
7	M18-7	扳手(7mm)	spanner	1	1	1
8	M18-8	扳手(8mm)	spanner	1	1	1
9	M18-9	內六角扳手(1.5mm)	cross screw driver	1	1	1
10	M18-10	內六角扳手(2mm)	cross screw driver	1	1	1
11	M18-11	內六角板手(5mm)	cross screw driver	1	1	1
12	M18-12	內六角扳手(6mm)	cross screw driver	1	1	1
13	M18-13	螺絲刀(小)	screw driver	1	1	1
14	M18-14	螺絲刀(中)	screw driver	1	1	1
15	M18-15	螺絲刀(大)	screw driver	1	1	1
16	M18-16	鑷子	tweezer	1	1	1
17	M18-17	金屬線	metal guide	1	1	1
18	M18-18	腳踏板	presser foot base	1	1	1
19	M18-19	腳踏板鏈	presser foot base chain	1	1	1
20	M18-20	附件盒	affach nentbox	1	1	1
21	S009	頂針螺釘	thimble screw	1	1	1
22	DCX27	機針	needle	4	4	4
23	M6-17	下刀	lower knife	1	1	1
24	M15-6	過濾器	oil filter	1	1	1

D						
E						



高林股份有限公司  
KAULIN MFG. CO., LTD.

由於對產品的改良及更新，本產品零件圖及外觀的修改恕不事先通知！  
The specification and/or appearances of the equipment described in this parts list are  
subject to change because of modification which will without previous notice.  
HBL-20W03.DEC.2024