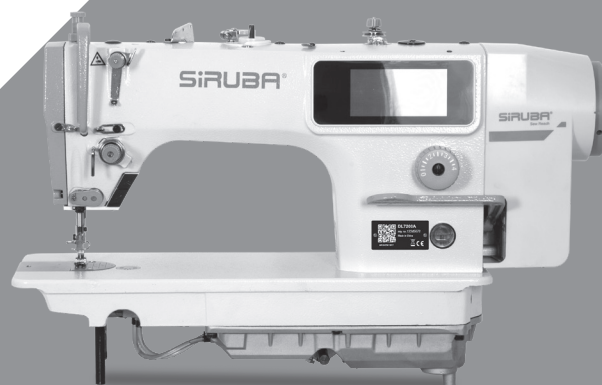












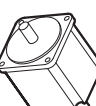
SIRUBA

零件圖

PARTS LIST

DL7200A

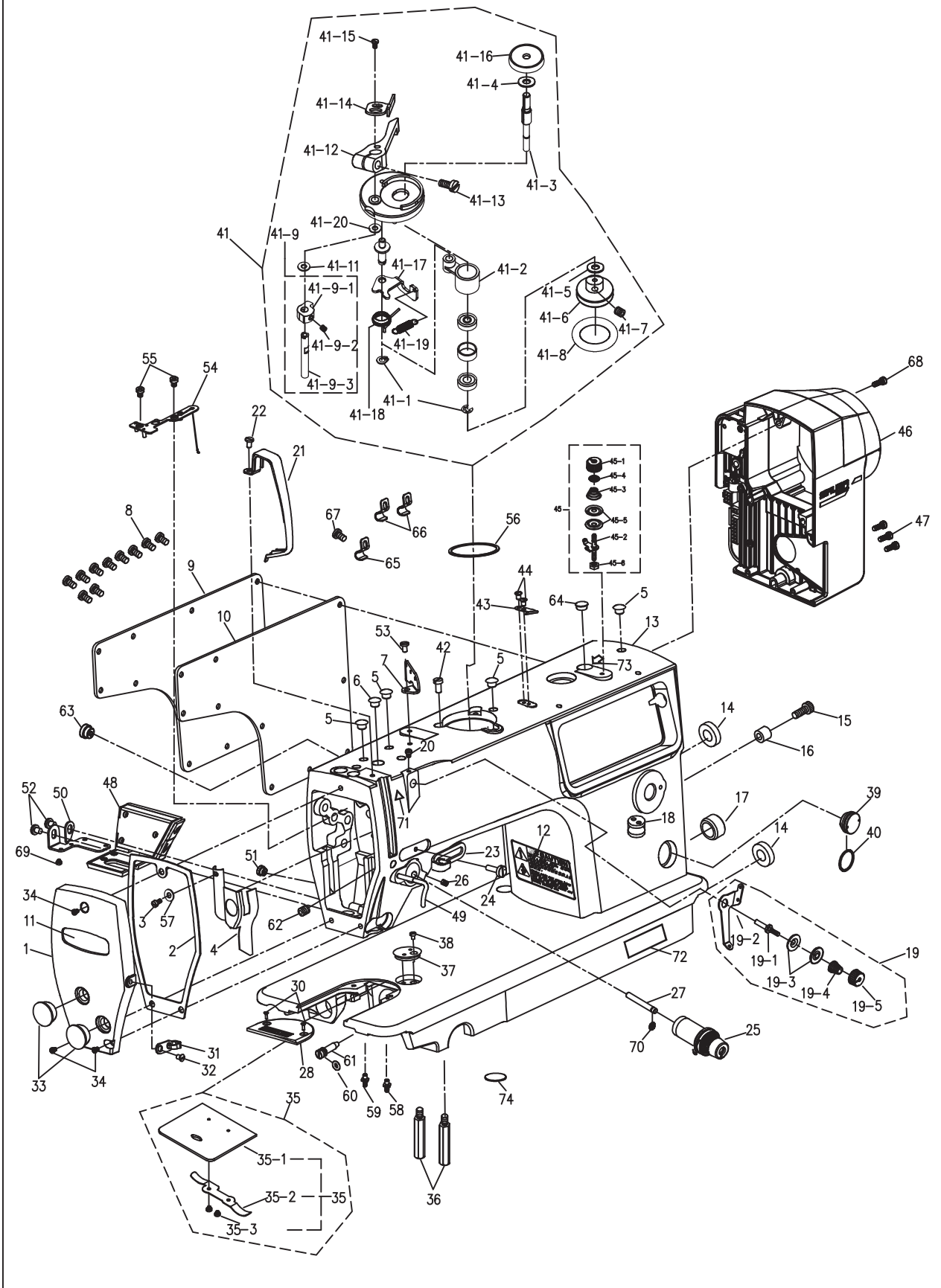


	MODEL		SUB-CLASS		NEEDLE PLATE		FEED DOG		PRESSER FOOT		HOOK ASM		BOBBIN CASE ASM		BOBBIN		NEEDLE		HAND WHEEL		MOTOR
DL7200A - BM1-10 ~ DL7200A-BM1-16	機 型	規格	中厚布料 至 厚布料	E1704	D1701	P1701	G1121	G1202	G1303	DBX1#14	LH1500-E	BHL-439P0035A									
DL7200A-BM1-10 ~ DL7200A-BM1A-16			厚布料	E1704D	D1702	P1701	G1125J	G1202	G1303	DBX1#21	LH1500-E	BHL-439P0035A									
DL7200A-BH1-10 ~ DL7200A-BH1-16			厚布料	E1711	D1711	P1711	G1125J	G1202	G1303	DBX1#21	LH1500-E	BML-437P0035A									
DL7200A-BH1A-10 ~ DL7200A-BH1A-16			厚布料	E1711D	D1711D	P1711D	G1125J	G1202	G1303	DBX1#21	LH1500-E	BML-437P0035A									

規格件表 CONVERSION CHART

1. 機殼部件

MACHINE FRAME&MISCELLANEOUS COVER COMPONENTS

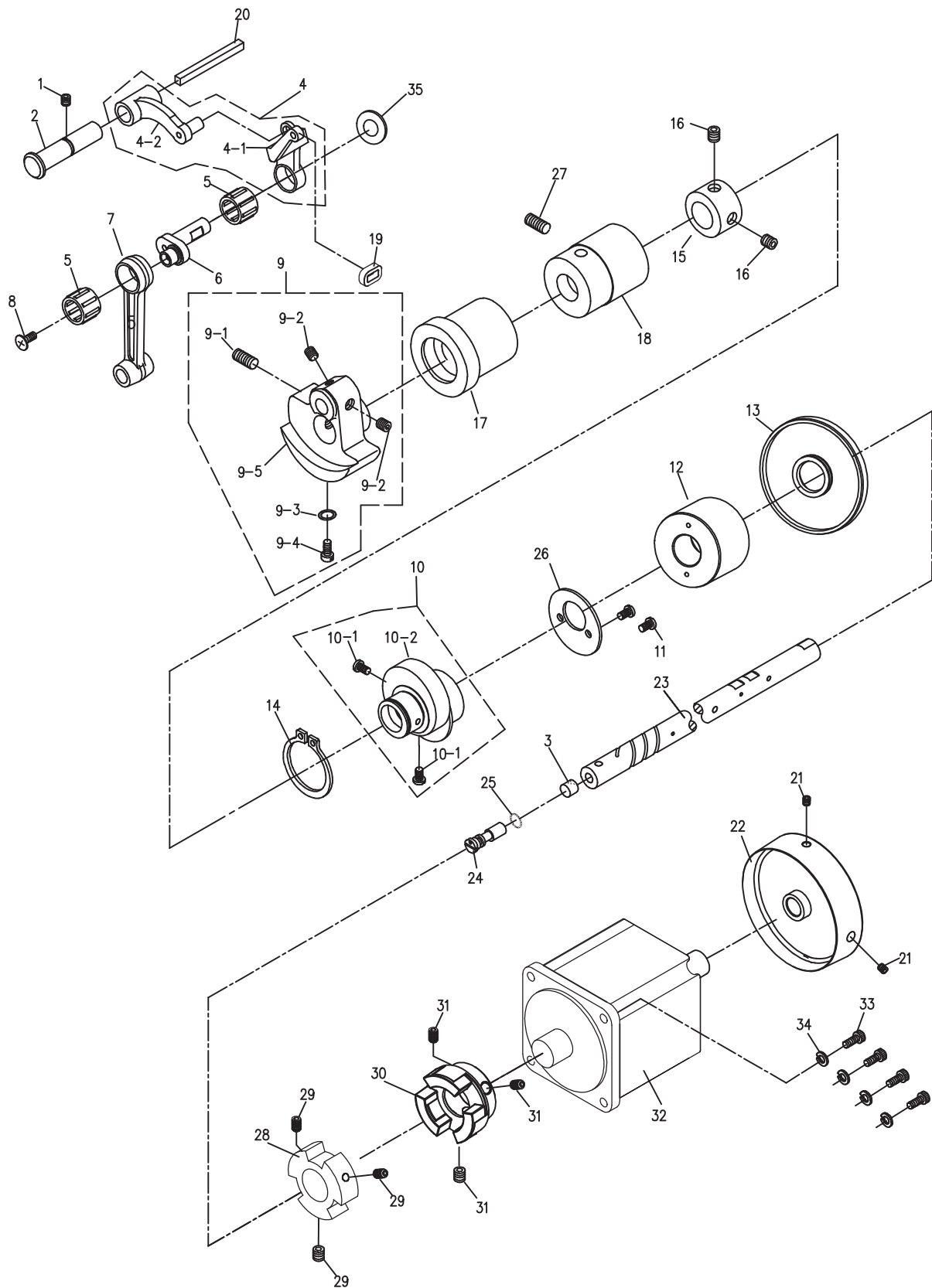


1.機殼部分/MACHINE FRAME&MISCELLANEOUS COVER COMPONENTS					
序號 Ref.No.	新圖號 new part No.	名稱 Part name	Name of parts	數量 Qty	備注 Note
1	6900A01001	面板	Face plate	1	
2	6900A01002	面板墊	Face plate agsket	1	
3	S073184404	防油板螺釘	Screw 1/8 × 44 L=4	1	
4	280001004	面部防油板	Arm oil shifld	1	
5	991001005	挑綫連杆銷孔塞	Rubber plug	4	
6	991001006	針杆曲柄螺孔塞	Rubber plug	1	
7	991001007	三眼過綫板	Thread guide rod	1	
8	S094762809	後窗板螺釘	Screw 3/16 × 28 L=9	11	
9	920001009	後窗板	Side plate	1	
10	920001009	後窗板墊	Gasker	1	
11	280001011	面板商標牌	Face plate	1	
12	720001012	安全指示牌	Safety lable	1	
13	720001013	機殼組件	Machine cover	1	
14	991001014	送料調節器孔塞	Rubber plug	1	
15	S184782818	倒縫限位套緊固螺釘	Screw 3/16 × 28 L=18	1	
16	991001016	倒縫限位套	Reverse feed lever stopper	1	
17	991001017	下軸盲孔塞	Rubber plug	1	
18	991001018	導綫過綫套	Magnet cord rubber	1	
	991001018-1	導綫過綫套	Magnet cord rubber	1	
19	991001019	小夾綫器組件	Thread tension asm	1	
19-1	991001019-1	小夾綫螺釘	Small clip line screw	1	
19-2	991001019-2	小夾綫過綫板	Thread tension guide	1	
19-3	991001019-3	小夾綫板	Thread tension disk	2	
19-4	991001019-4	小夾綫簧	Thread tension spring	1	
19-5	991001019-5	小夾綫螺母	Thread tension nut	1	
20	S114374006	小夾綫組件支架螺釘	Screw 11/64 × 40 L=6	1	
21	991001021	挑綫防護罩	Thread take-up lever cover	1	
22	S094762806	挑綫防護罩螺釘	Screw 3/16 × 28 L=6	1	
23	991001023	右綫鈎	Arm thread guide right	1	
24	S074374006	右綫鈎螺釘	Screw 11/64 × 40 L=6	1	
25	280001025	夾綫器組件	Thread tension asm	1	
26	S115952807	夾綫器支緊螺釘	Screw 15/64 × 28 L=7	1	
27	280001027	鬆綫釘	Tension releasing	1	
28	991001028	針板 (薄料/4排牙)	Throat plate	1	
	991001028D	針板 (大針距/3排牙)	Throat plate	1	
	0303D	針板 B2.6(大旋梭/3排牙)	Throat plate	1	
30	S044374006	針板螺釘	Screw 11/64 × 40 L=6	2	
31	991001031	左綫鈎	Arm thread guide left	1	
32	S074374006	左綫鈎螺釘	Screw 11/64 × 40 L=6	1	
33	991001033	面板調節孔塞	Rubber plug	2	
34	S094762808	面板螺釘	Screw 3/16 × 28 L=8	3	
35	991001035	推板組件	Slide plate asm	1	
35-1	991001035-1	推板	Slide plate	1	
35-2	991001035-2	推板簧	Bed slide spring	1	
35-3	S082385602	推板簧螺釘	Screw 3/32 × 56 L=2.2	2	
36	280001036	底板支柱	Bed slide spring	2	
37	991001037	卷邊器	Ruler stopper	1	
38	S074374006	卷邊器螺釘	Screw 11/64 × 40 L=6	1	
39	280001039	油窗	Oil sight window	1	
40	280001040	油封	O ring	1	
41	991001041	繞綫器組件	Winder assembly	1	
41-1	991001041-1	擋圈E4	Ring E4	2	
41-2	991001041-2	繞綫軸基座	Bobbin base	1	
41-3	991001041-3	繞綫軸	Spool	1	
41-4	991001041-4	O型圈P9	O ring	1	

41-5	991001041-5	平墊圈S6	Flat washer	1	
41-6	991001041-6	繞綫輪	Winding wheel	1	
41-7	991001041-7	螺釘M5X5	Screw M5x5	2	
41-8	991001041-8	橡皮墊圈29	Rubber washer	1	
41-9	991001041-9	梭芯夾凸輪組件	Shuttle cam asm.	1	
41-9-1	991001041-9-1	梭芯夾凸輪	Shuttle cam	1	
41-9-2	991001041-9-2	螺釘M5X5	Screw M5x5	1	
41-9-3	991001041-9-3	梭芯夾軸	Shuttle clamp shaft	1	
41-11	991001041-11	平墊圈S6	Flat washer	2	
41-12	991001041-12	梭芯壓臂柄	Shuttle arm handle	1	
41-13	991001041-13	螺釘M4X12	Screw	1	
41-14	991001041-14	梭芯夾	Bobbin clip	1	
41-15	991001041-15	螺釘SM4.76	Screw	2	
41-16	991001041-16	梭芯座	Bobbin base	1	
41-17	991001041-17	繞綫杠杆	Winding lever	1	
41-18	991001041-18	彈簧	Spring	1	
41-19	991001041-19	彈簧	Spring	1	
41-20	991001041-20	O型密封圈S5	O type sealing ring	1	
42	M080500810	繞綫器螺釘	Bobbin screw	3	
43	991001043	割綫刀	Knife	1	
44	S093574005	割綫刀螺釘	Knife screw	2	
45	991001045	繞綫夾綫器組件	Thread tension asm.	1	
45-1	991001045-1	夾綫螺母	Tension nut	1	
45-2	991001045-2	夾綫螺釘	Tension post	1	
45-3	991001045-3	夾綫彈簧	Tension spring	1	
45-4	991001045-4	夾綫板	Thread tension disk presser	2	
45-5	991001045-5	過綫板	Thread tension guide	1	
45-6	991001045-6	夾綫螺母(下)	Tension nut	1	
46	7200A01046	電控(A)(鮑麥克斯)	Motor cover	1	
47	M180500835	電控緊固螺釘	Screw	3	
48	3801202101	倒縫燈開關組件	Reverse seam lamp switch assembly	1	
49	28001049	大綫勾	Presser bar thread guide	1	
50	991001050	倒縫燈開關支架	Switch support for reverse seam lamp	1	
51	280001065	電子鬆綫器過綫橡膠塞	Rubber plug	1	
52	S094762806	倒縫燈開關固定螺釘	Screw	2	
53	S074374007	三眼綫勾螺釘	Screw	1	
54	991001054	油綫板組件	Oil plate assembly	1	
55	S093574016	油綫板固定螺釘	Screw	2	
56	991001056	繞綫器墊片	Bobbin Washer	1	
57	991001057	防油板墊片	Grease plate gasket	1	
58	280001058	回油管接頭(下軸)		1	
59	280001059	進油管接頭(下軸)	Inlet pipe joint (lower shaft)	1	
60	280001060	油量調節螺釘O型圈	O-Ring	1	
61	280001061	油量調節螺釘	Screw	1	
62	S15357406	大綫勾緊定螺釘	Screw	1	
63	280001063	操作面板出綫橡膠塞	Rubber plug	1	
64	991001058	橡膠塞	Rubber plug	3	
65	280001065	夾綫1		1	
66	280001066	綫夾2		2	
67	S094762806	綫夾螺釘	Screw	1	
68	M180500825	電控緊固螺釘	Screw	1	
69	M090300506	燈開關支架螺釘	Screw	4	
70	280001069	O型圈	O-ring	1	
71	280001070	安全標示	Marking	1	
72	280001071	機器翻倒說明	Marking	1	
73	280001072	注油標示	Oiling Marking	1	
74	280001074	檢驗標示	Test Marking	1	

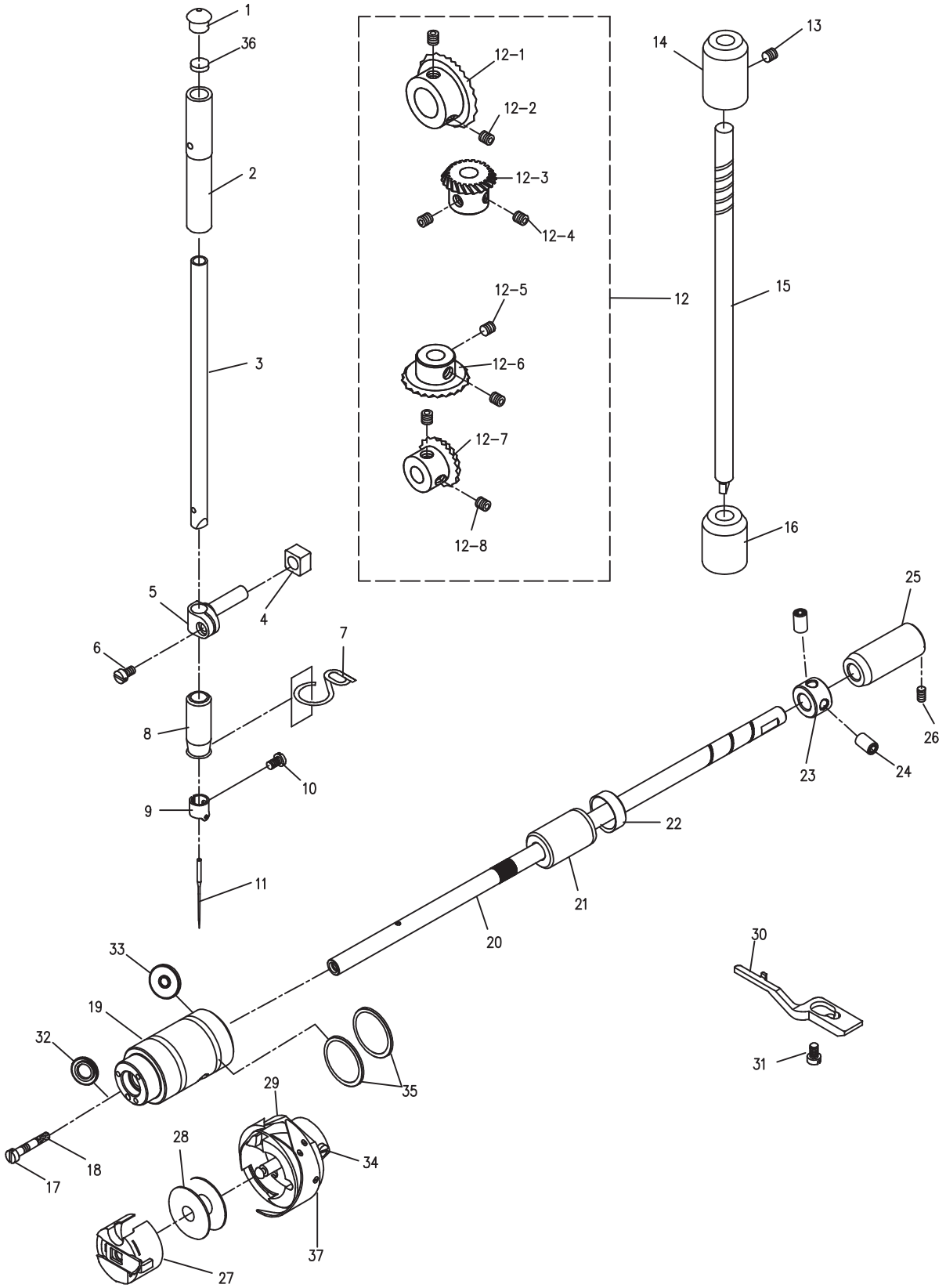
2. 上軸/挑綫部件

MAIN SHAFT&THREAD-UP LEVER COMPONENTS



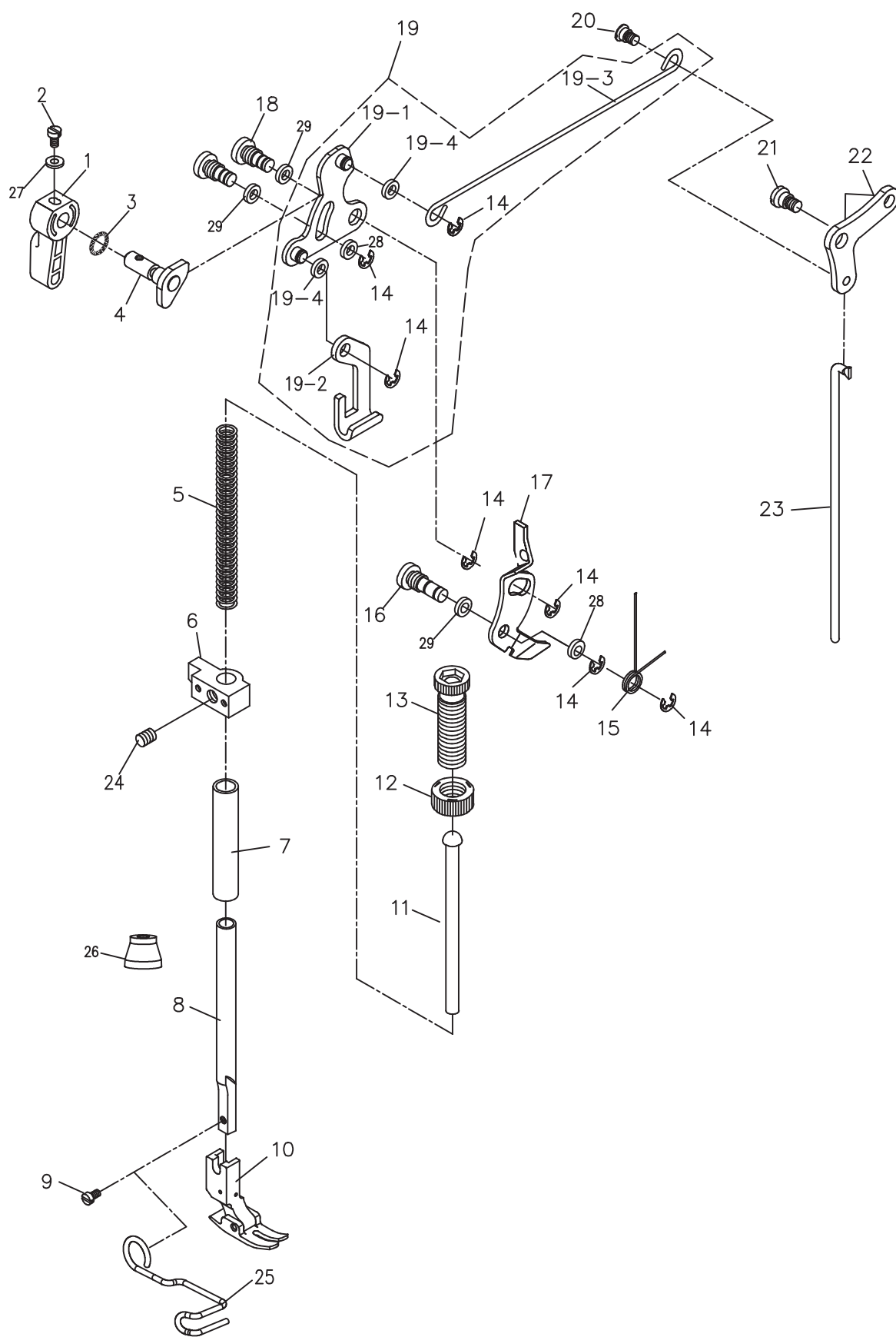
2.上軸/挑綫部件/MAIN SHAFT&THREAD-UP LEVER COMPONENTS					
序號 Ref.No.	新圖號 new part No.	名稱 Part name	Name of parts	數量 Qty	備注 Note
1	991002001	挑綫連杆銷螺釘	Screw 15/64 × 28 L=10.5	1	
2	991002002	挑綫連杆銷	thread take-up crank shaft	1	
3	991002003	曲柄油量限制氈	Roller felt	1	
4	991002004	挑綫連杆組件	thread take-up lever asm	1	
	991002004H	挑綫連杆組件(厚料)	thread take-up lever asm	1	
	991002004D	挑綫連杆組件(鋁制厚料)	thread take-up lever asm	1	
4-1	991002004-1	挑綫杆	take-up lever	1	
	991002004-1H	挑綫杆	take-up lever	1	
	991002004-1D	挑綫杆	take-up lever	1	
4-2	991002004-2	挑綫連杆	Pick line connecting rod	1	
	991002004-2H	挑綫連杆	Pick line connecting rod	1	
	991002004-2D	挑綫連杆	Pick line connecting rod	1	
5	991002005	挑綫杆滾針軸承	Needle bearing	2	
6	991002006	挑綫曲柄	Needle bar crank	1	
	991002007H	挑綫曲柄(厚料)	Needle bar crank	1	
7	991002007	針杆連杆	Needle bar crank rod	1	
8	991002008	挑綫曲柄左旋螺釘	Left screw 9/64 × 40 L=4.8	1	
9	991002009	針杆曲柄組件	Counter weight	1	
	991102009H	針杆曲柄組件(厚料)	Counter weight	1	
9-1	S127142816	針杆曲柄緊固螺釘	Screw 9/32 × 28 L=16	1	
9-2	S116354006	挑綫曲柄定位螺釘	Screw 1/4 × 40 L=6	2	
9-3	991002009-3	定位螺絲O型圈	Rubber ring	1	
9-4	S077142815	針杆曲柄定位螺釘	Screw 9/32 × 28 L=15.5	1	
9-5	991002009-5	針杆曲柄	Counter weight	1	
10	991002010	送料偏心輪組件	Feed drive eccentric cam asm.	1	
10-1	S076354011	送料偏心輪螺釘	Screw 1/4 × 40 L=11	2	
10-2	991002010-2	送料偏心輪	Feed drive eccentric cam	1	
11	S093574006	送料偏心輪蓋板螺釘	Screw 9/64 × 40 L=6	2	
12	991002012	上軸後套	Mainshaft back sleeve	1	
13	991002013	上軸後套油封	Oil seal of mainshaft back sleeve		
14	991002014	拾牙連杆軸擋圈	Snap ring	1	
15	991002015	上軸擋圈	Thrust collar asm	1	
16	S116354006	上軸擋圈螺釘	Screw 1/4x40 L=6	2	
17	991002017	上軸前軸套	Main shaft front bushing asm.	1	
18	991002018	上軸中軸套	Bushing intermediate	1	
19	991002019	挑綫杆橡皮套	Rubber	1	
20	991002020	挑綫連杆銷供油綫	Thread take-up crank shaft felt	1	
21	M140500806	手輪螺釘	Screw	2	
22	720002022	手輪	Hand wheel	1	
23	991002023	上軸	Main shaft	1	
24	991002024	上軸油量調節銷	Oil amount adjusting pin	1	
25	991002025	上軸油量調節銷O型圈	Rubber ring	1	
26	991002026	送料偏心輪蓋板	Thrust collar	1	
27	S145952808	上軸中軸套螺釘	Screw	1	
28	991002028	聯軸器(A)	Connect block A	1	
29	M140601008	連軸器螺釘	Screw M6 × 6	3	
30	991002030	聯軸器(B)	Connect block B	1	
31	M140601006	聯軸器(B)固定螺釘	Screw	3	
32	72002032A	直驅電機組件(鮑麥克斯)	Motor asm.	1	
33	M180500822	電機安裝螺釘M5X25	Screw	4	
34	991002034	電機安裝螺釘墊片	Washer	4	
35	W220801605	墊片	Washer	1	

3. 針杆/豎軸/下軸部件
 NEEDLE BAR, UPRIGHT SHAFT & HOOK DRIVING SHAFT COMPONENTS



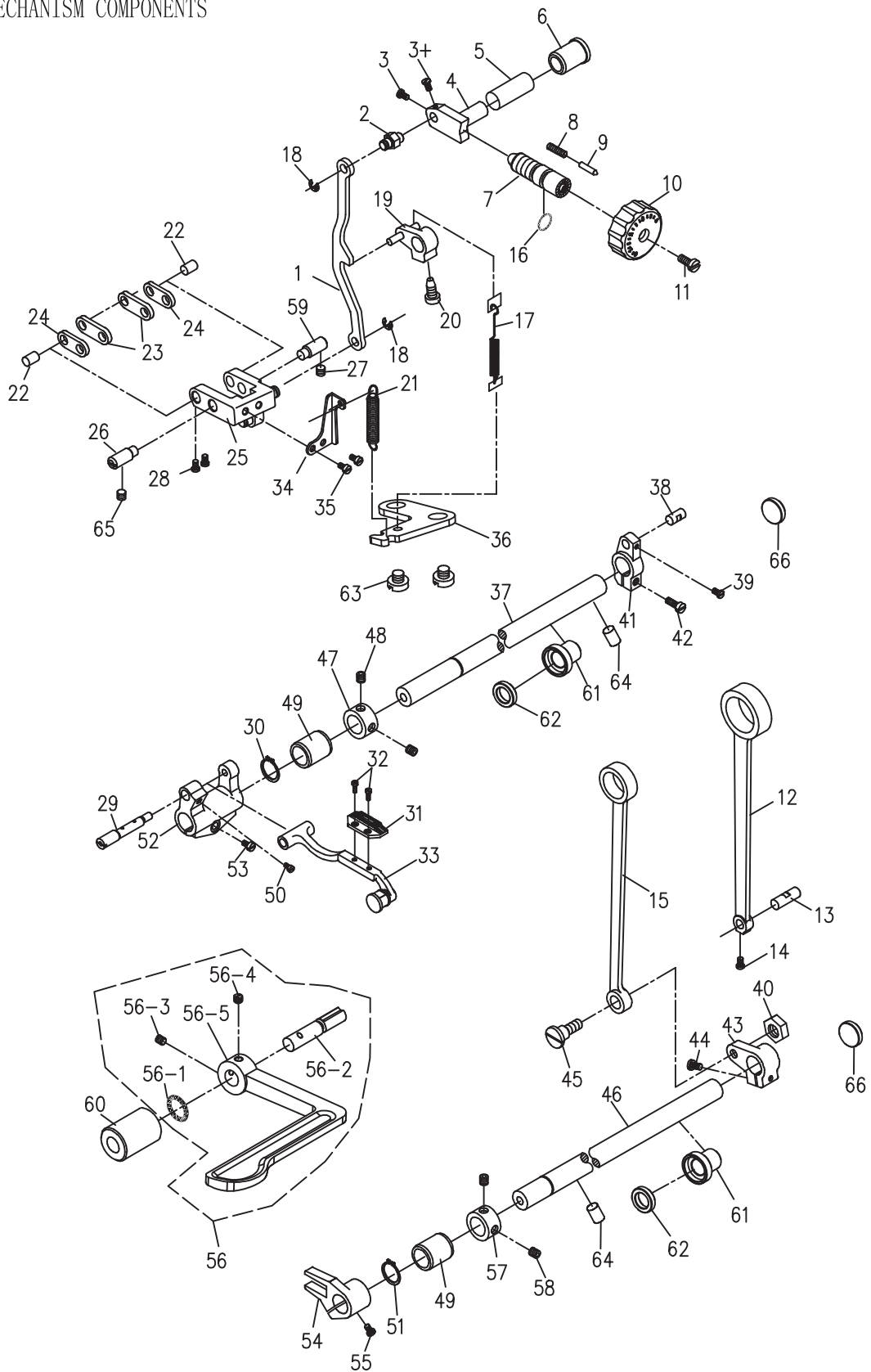
3.針杆/豎軸/下軸部件/NEEDLE BAR, UPRIGHT SHAFT&HOOK DRIVING SHAFT COMPONENTS					
序號 Ref.No.	新圖號 new part No.	名稱 Part name	Name of parts	數量 Qty	備注 Note
1	991003001	針杆上孔塞	Cap	1	
2	991003002	針杆上套	Needle bar bushing upper	1	
3	991003003	針杆	Needle bar	1	
	991003003H	針杆(厚料)	Needle bar	1	
4	280002004	針杆連接柱滑塊	Slide block	1	
5	991003004	針杆連接柱	Needle rod holder asm.	1	
6	S073574007	針杆連接柱螺釘	Screw 9/64 × 40 L=7.5	1	
7	991003007	針杆下套綫鈎	Needle bar thread guide	1	
8	991003008	針杆下套	Needle bar bushing lower	1	
9	991003010	針杆過綫環	Needle bar thread guide	1	
10	S083184405	機針螺釘	Screw 1/8 × 44 L=4.8	1	
11	991003011	機針 DBX1 #14	Needle DBx1 #14	1	
	991003011H	機針 DPx5 #21	Needle DPx5 #21	1	
12	991003012	傘齒輪組件	Gear pinion asm.	1	
12-1	991003014	上軸傘齒輪	Gear asm.	1	
12-2	S116354008	傘齒輪螺釘	Screw 1/4 × 40 L=8	2	
12-3	991003016	豎軸上傘齒輪	Pinion asm.	1	
12-4	S116354008	傘齒輪螺釘	Screw 1/4 × 40 L=8	2	
12-5	S116354008	傘齒輪螺釘	Screw 1/4 × 40 L=8	2	
12-6	991003019	豎軸下齒輪	Gear asm.	1	
12-7	991003021	下軸傘齒輪	Pinion asm.	1	
12-8	S116354008	傘齒輪螺釘	Screw 1/4 × 40 L=8	2	
13	S145952804	豎軸上套緊固螺釘	Screw	1	
14	991003017	豎軸上軸套	Upright shaft bushing,lower	1	
15	991003014	豎軸	Upright shaft	1	
16	991003017	豎軸下軸套	Upright shaft bushing,lower	1	
17	991003028	下軸限油螺釘	Oil seal screw	1	
18	991003027	下軸限油芯	Oil wick	1	
19	280002019	下軸前軸套	Lower shaft front metal	1	
20	991003022	下軸	Lower shaft		
21	991006047	下軸中套	Lower axle sleeve	1	
22	280002022	下軸中套油封	Oil Seal	1	
23	991003020	下軸擋圈	Thrust collar asm.	1	
24	S074374005	下軸擋圈螺釘	Screw 11/64 × 40 L=5	2	
25	991003018	下軸後軸套	Bushing rear	1	
26	S145952808	下軸後軸套螺釘	Screw	1	
27	991003030	梭殼	Bobbin case	1	
28	991003029	梭芯	Bobbin	1	
29	991003015	旋梭	Hook asm.	1	
30	991003023	旋梭定位勾	Bobbin case holder	1	
31	S084374011	旋梭定位勾螺釘	Screw SM11/64 × 40 L=11	1	
32	930002021	下軸前套油封(前)	oil seal	1	
33	030305068	下軸前套油封(後)	oil seal	1	
34	991003032	旋梭螺釘	Screw	3	
35	280003035	O型圈	O ring	2	
36	280003036	針杆油氈	Linoleum	1	
37	991003037	螺釘	Screw	1	

4. 壓杆部件
HAND LIFTER COMPONENTS



4.壓杆部件/ HAND LIFTER COMPONENTS					
序號 Ref.No.	新圖號 new part No.	名稱 Part name	Name of parts	數量 Qty	備注 Note
1	991004001	壓腳扳手	Hand lifter	1	
2	991004002	壓腳扳手螺釘	Screw 9/64 × 40 L=10	1	
3	991004003	壓腳扳手軸O型圈	Rubber ring	1	
4	991004004	壓腳扳手凸輪部件	hand lifter cam asm	1	
5	991004029	調壓簧	Presser adjurting spring	1	
	991004029H	調壓簧(厚料)	Presser adjurting spring H	1	
6	280004006	壓杆導架	Presser bar guide bracket	1	
7	991004005	壓杆軸套	Presser bar bushing lower	1	
8	991004031	壓杆	Presser bar	1	
9	S073574011	壓腳螺釘	Screw 9/64 × 40 L=11	1	
10	991004009	壓腳部件	Presser foot asm	1	
	991004009H	壓腳部件(厚料)	Presser foot asm	1	
	991004009D	壓腳部件(大旋梭)	Presser foot asm	1	
11	991004033	調壓導杆	Presser guide bar	1	
12	280004012	調壓螺母	Presser adjurting screw nut	1	
	280004012H	調壓螺母(厚料)	Presser adjurting screw nut H	1	
13	280004013	調壓螺釘	Presser spring regulator	1	
	280004013H	調壓螺釘	Presser spring regulator H	1	
14	991004008	擋圈	E-ring 5	7	
15	991004022	鬆綫頂板復位簧	Tension release return spring	1	
16	991004026	鬆綫頂板螺紋銷	Tension release shaft	1	
17	280004017	鬆綫頂板	Thread tension relerse wire	1	
18	991004007	前杠杆螺紋銷	Link shaft	2	
19	280004019	前杠杆組件	Knee lifting cross rod asm	1	
19-1	280004019-1	抬壓腳前杠杆	Hand lifter link	1	
19-2	991004032-2	壓腳升降板	Lifting lever	1	
19-3	991004032-3	抬壓腳拉杆	Knee lifting cross rod	1	
19-4	280004019-4	墊圈	Washer	2	
20	991004010	抬壓腳拉杆螺釘	Hinge screw	1	
21	991004011	後杠杆軸拉螺釘	Hinge screw	1	
22	991004013	抬壓腳後杠杆	Lifting lever link	1	
	991004013-H	抬壓腳後杠杆(厚料)	Lifting lever link(Thick material)	1	
23	280004023	抬壓腳頂杆	Knee lifter connecting rod	1	
24	S126354006	導架螺釘	Screw	1	
25	991004036	壓腳保護架	Fender bracket	1	
26	991004041	擋油帽	Cup	1	
27	991004042	墊片	Washer	1	
28	W220630707	墊片	Washer	2	
29	991004039	橡膠墊片	Washer	3	

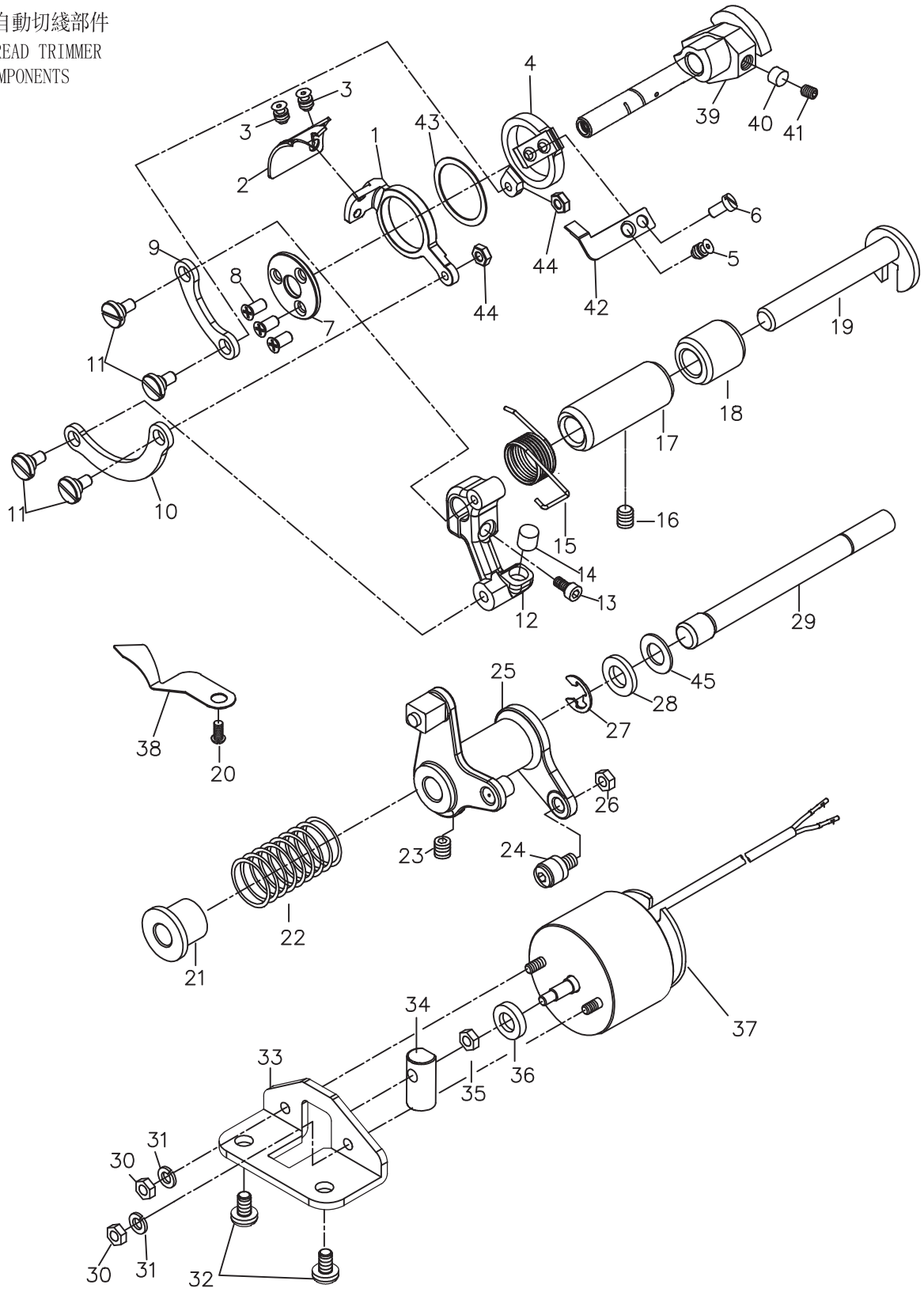
5. 送料部件
FEED MECHANISM COMPONENTS



5.送料部件/FEED MECHANISM COMPONENTS					
序號 Ref.No.	新圖號 new part No.	名稱 Part name	Name of parts	數量 Qty	備注 Note
1	991005001	倒送料連杆	Feed adjust rod	1	
	991005001D	倒送料連杆(大旋梭)	Feed adjust rod(big hook)	1	
2	991005002	倒送料連杆銷	Feed regulator pin	1	
3	S093574006	倒送料連杆銷螺釘	screw	2	
3+	M140500806	送料調節器緊固螺釘	screw	2	
4	991005004	送料調節器	Feed regulator	1	
	991005004D	送料調節器(大針距)	Feed regulator (Big needle distance)	1	
5	991005005	送料調節器軸套	Feed regulator bushing	1	
6	991005006	送料調節器軸	Feed regulator shaft	1	
7	991005007	針距調節螺杆	Feed regulator screw	1	
8	991005008	止動銷彈簧	Spring	1	
9	991005009	止動銷	Feed adjustpin	1	
10	280005010	針距旋鈕(0-5)	Needle distance knob(0-5)	1	
11	S074762818	針距旋鈕螺釘	Screw 3/16 × 28 L=18	1	
12	991005012	送料連杆	Rocker shaft connecting rod	1	
13	991005013	送料連杆銷	Walking foot long pin	1	
14	S073574005	送料連杆銷螺釘	Screw 9/64 × 40 L=4	1	
15	991005015	拾牙連杆	Connecting rod	1	
16	991005016	針距調節螺杆O型圈	Rubber ring	1	
17	991005017	擺動板座復位簧	Feed reverse spring	1	
18	991005018	擋圈E5	E-ring 5	2	
19	991005019	倒送料曲柄組件	Feed reverse arm asm.	1	
	991005019D	倒送料曲柄組件(大針距)	Feed reverse arm asm(Big needle	1	
20	S074762815	倒送料曲柄螺釘 Screw 3/16 × 28 L=14	Feed reverse arm screw	1	
21	991005021	倒送料拉簧	Spring	1	
22	991005022	短擺動板連接銷	Walking foot short pin	2	
23	991005023	長擺動板	Connecting link long pin	2	
24	991005024	短擺動板	Connecting link short pin	2	
25	991005025	擺動座	Feed adjust link asm	1	
26	991005026	擺動板座右銷	Adjusting link fulcrum shaft	1	
27	991002001	右銷螺釘	Screw 15/64 × 28	1	
28	S123574005	連杆銷螺釘	Screw 9/64 × 40 L=5	2	
29	991005029	牙架偏心銷	Feed bar shaft	1	
30	991005030	送布軸軸用擋圈	Retaining ring	1	
31	991005031	送布牙	Feed dog	1	
	991005031H	送布牙(厚料/3排牙)	Feed dog	1	
	991005031D	送布牙(大針距/3排牙)	Feed dog	1	
	0303D	送布牙(大旋梭/3排牙)	Feed dog	1	
32	S073184406	送布牙螺釘	Screw 1/8 × 44 L=6	2	
33	991005033	牙架部件	Feed bar asm	1	
	991005033D	牙架部件(大旋梭)	Feed bar asm	1	
34	991005034	擺動板座右復位板	Adjusting link spring guide	1	
35	S074374007	復位板緊固螺釘	Screw 11/64 × 40 L=7	2	
36	991005036	拉簧固定板	Feed spring hood	1	

37	991005037	送布軸	Feed rocker shaft	1	
38	991005038	送布曲柄銷	Walking foot middle pin	1	
39	S073574006	曲柄銷螺釘	Screw 9/64 × 40 L=8	1	
40	N217142805	拾牙連杆軸位螺母	Nut 9/32 × 28	1	
41	991005041	送布曲柄	Feed rocker shaft crank	1	
	991005041D	送布曲柄（大針距15mm）	Feed rocker shaft crank	1	
42	S074762815	送布曲柄螺釘	Screw 3/16 × 28 L=15	1	
43	991005043	拾牙後曲柄	Lifting rocker asm.	1	
44	S074762815	拾牙後曲柄螺釘	Screw 3/16 × 28 L=15	1	
45	991005045	拾牙連杆軸位螺釘	Hinge screw	1	
46	991005046	拾牙軸	Feed driving shaft	1	
47	991005047	送布軸擋圈	Thrust collar asm.	1	
48	S126354004	送布軸擋圈螺釘	Screw 1/4 × 40 L=4	2	
49	991005049	送布、拾牙軸前軸套	Feed rocker shaft bushing	2	
50	S084374007	牙架銷螺釘	Screw 11/64 × 40 L=7	2	
51	991005051	拾牙軸軸用擋圈	Retaining ring	1	
52	991005052	牙架座（牙架曲柄）	Feed bar crank asm.	1	
53	S074762812	牙架座螺釘	Screw 3/16 × 28 L=12	1	
54	991005054	拾牙叉	Driving shaft crank asm.	1	
55	S084374012	拾牙叉螺釘	Screw 11/64 × 40 L=12	1	
56	280005056	倒送料扳手組件	Reverse feed control lever asm.	1	
56-1	991005056-1	倒送料軸O型圈	Rubber ring	1	
56-2	991005056-2	倒送料軸	Feed reverse shaft	1	
56-3	S145952808	倒送料扳手螺釘	Screw	1	
56-4	S145952810	倒送料扳手定位螺釘	Screw	1	
56-5	280005056-5	倒送料扳手	Reverse frd control lever	1	
57	991005047	拾牙軸擋圈	Thrust collar	1	
58	S126354004	拾牙軸擋圈螺釘	Screw 1/4x40 L=4	2	
59	991005059	擺動軸板座右銷	Adjusting link fulcrum shaft	1	
60	991005060	倒送料軸軸套	Axle Sleeve	1	
61	280005061	送布、拾牙中套	Axle Sleeve	2	
62	280005062	送布、拾牙中套油封	Oil Seal	2	
63	S075952810	拉簧固定板螺釘	Screw	2	
64	991005064	油氈	Linoleum	2	
65	991005065	左銷螺釘	Screw	1	
66	280005066	橡膠塞	Rubber stopper	2	

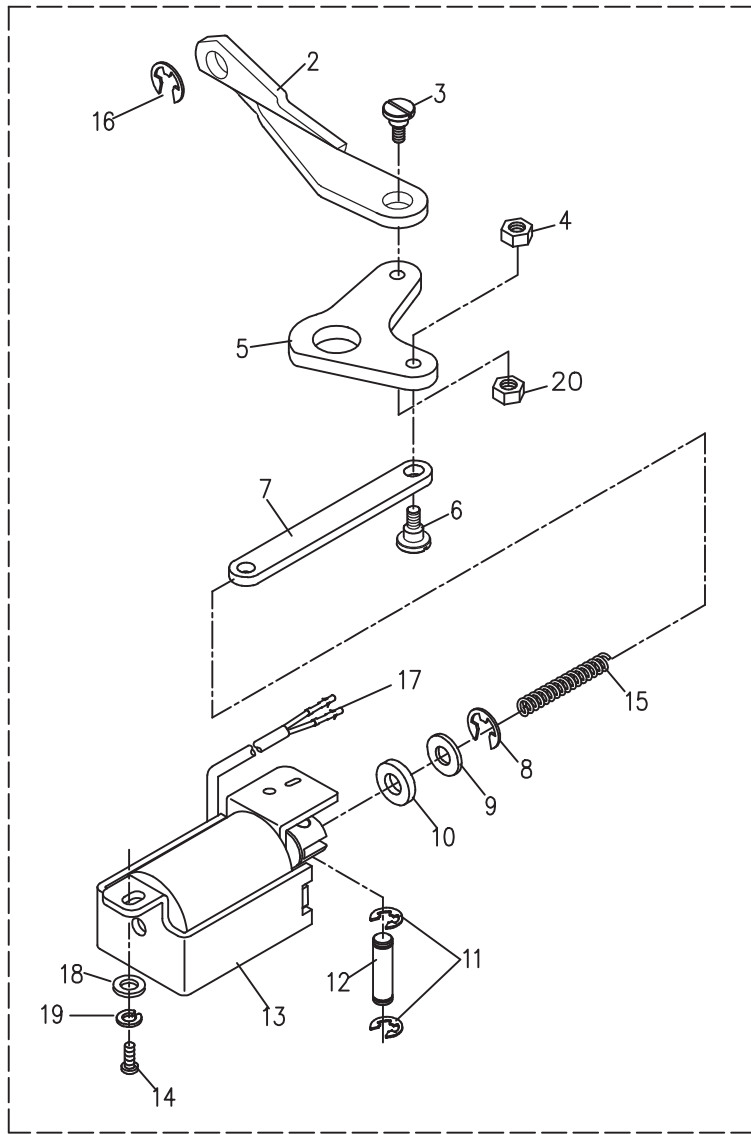
6. 自動切綫部件
THREAD TRIMMER
COMPONENTS



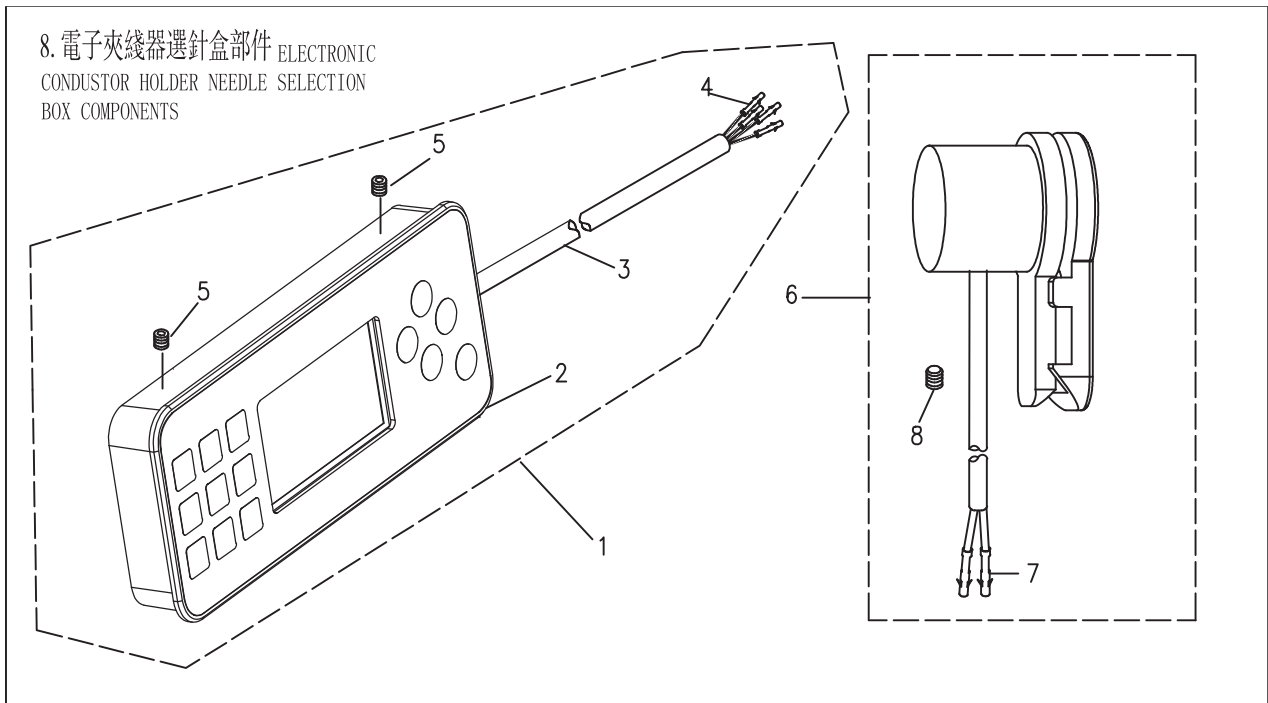
6.自動切綫部件/THREAD TRIMMER COMPONENTS					
序號 Ref.No.	新圖號 new part No.	名稱 Part name	Name of parts	數量 Qty	備注 Note
1	280006001	下動刀架	Lower tool rest	1	
2	280006002	下動刀	Under the knife	1	
3	S047374005	下動刀固定螺釘	Screw	2	
4	280006004	上動刀架	Upper tool carrier	1	
5	S074374005	上動刀固定螺釘	Screw	1	
6	S047374005	上動刀緊固螺釘	Screw	1	
7	280006007	刀架壓板	Tool holder plate	1	
8	M050300507	刀架壓板螺釘	Screw	3	
9	280006009	下動刀架連杆	Lower tool carrier rod	1	
10	280006010	上動刀架連杆	Upper movable knife rest connecting rod	1	
11	280006011	刀架固定軸位螺釘	Axial screw	4	
12	280006012	切刀驅動曲柄	Thread shear rock arm	1	
13	S184763214	螺釘SM3/16" x32 L=14	Screw SM3/16x32 L=14	1	
14	280006014	驅動曲柄止動塊	Positioning block	1	
15	991006014	彈簧	Spring	1	
16	S145952806	螺釘SM11/64" x40	Screw	1	
17	280006017	切綫軸套	Axle sleeve	1	
18	991006018	驅動曲柄軸襯套	Short bush	1	
19	280006019	切刀驅動曲柄軸	Cutter crank shaft	1	
20	S073574006	螺釘SM9/64" x40 L=5	Screw SM9/64x40 L=6	1	
21	991006026	扭簧端蓋	Spring cover	1	
22	991006027	切綫凸輪復位彈簧	Spring	1	
23	S116354006	螺釘SM11/64" x40	Screw	1	
24	991006030	滾柱	Roll shaft assy	1	
25	991006028	切綫凸輪曲柄組件	Thread shear rock arm shaft	1	
26	991006031	螺母	Nut	1	
27	991006033	擋圈E6	Retaining ring	1	
28	991006034	電磁鐵緩衝墊	Magnetic plug cushion mat	1	
29	280006029	切刀驅動軸	Thread shear shaft	1	
30	991006039	螺母M4	Nut M4	1	
31	991006048	墊圈4.5x8x0.5	Washer 4.5x8x0.5	2	
32	S075952810	螺釘	Screw	2	
33	991006040	切綫電磁鐵支架	Magnetic plug cushion mat	1	
34	991006035	切綫電磁鐵頂銷	Magnetic plug pin	1	
35	991006036	螺母SM1/4" x40	Nut	1	
36	991006037	墊圈	Washer	1	
37	991006044	剪綫電磁鐵組件	Electromagnet	1	
38	280006040	分綫片	Dividing strip	1	
39	280006041	剪綫凸輪	Thread shear cam	1	
40	991006020	切綫凸輪墊	Pole	2	
41	S156354010	螺釘SM1/4" x40 l=10	Screw	2	
42	280006044	上動刀	The knife	1	
43	280006045	墊片	Shim	1	
44	N210400703	螺母	Nut	2	
45	991006049	墊片		1	

7. 自動倒縫部件
AUTOMATIC REVERSE
FEED COMPONENTS

1



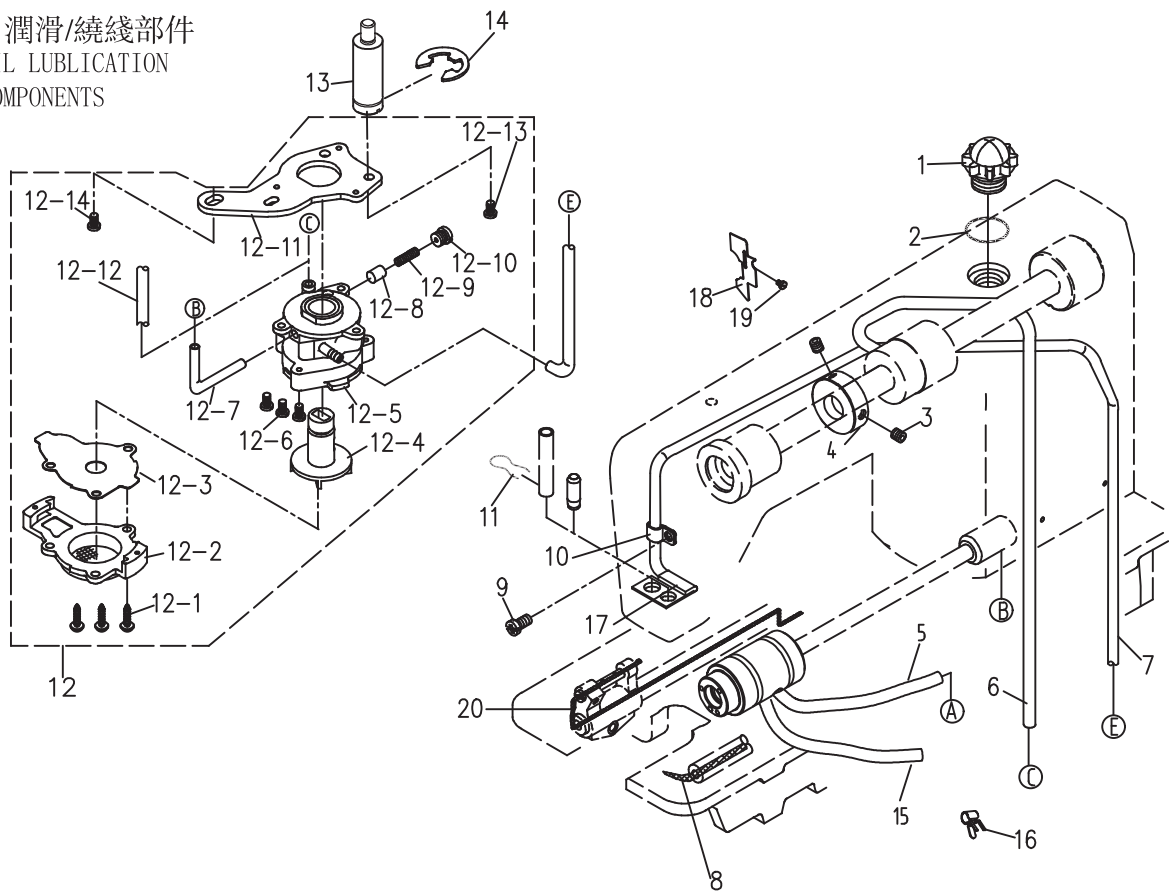
7.自動倒縫部件/AUTOMATIC REVERSE FEED COMPONENTS					
序號 Ref.No.	新圖號 new part No.	名稱 Part name	Name of parts	數量 Qty	備注 Note
1	991007001	自動倒縫部件	Reverse feed switch asm.	1	
2	991007002	自動倒縫拉杆	Reverse feed connecting shaft	1	
	991007002H	自動倒縫拉杆	Reverse feed connecting shaft	1	
3	991007003	自動倒縫拉杆螺釘	Reverse feed connecting shaft	1	
4	991007004	螺母	Nut	2	
5	991007005	倒縫曲柄	Connecting arm	1	
6	991007006	倒縫曲柄螺釘	Connecting arm screw	1	
7	991007007	倒縫電磁鐵連杆 (57mm)	Reverse feed connecting link	1	
	991007007D	倒縫電磁鐵連杆(大旋梭, 大針距) (55mm)	Reverse feed connecting link	1	
8	991007008	倒縫電磁鐵擋圈	E-ring 20	1	
9	991007009	墊片	Washer 16x24x2.6	1	
10	991007010	橡膠墊片	Rubber plunger	1	
11	991007011	連接銷卡簧	E-ring 4	2	
12	991007012	倒縫電磁鐵連接銷	Plunger arm pin	1	
13	991007013	倒縫電磁鐵	Reverse feed magnet asm.	1	
14	S075952812	電磁鐵緊固螺釘	Screw 15/64x28 L=12	2	
15	991007015	連杆定位簧	Plunger spring	1	
16	991007017	卡簧	E-ring	1	
17	991007018	導綫插針	Pin contact	2	
18	991007019	平墊片	Washer	2	
19	991007020	彈簧墊片	Spring washer	2	
20	991007021	螺母	Nut	1	



**8.電子夾綫器，選針盒部件/ELECTRONIC CONDUSTOR HOLDER
 NEEDLE SELECTION BOX COMPONENTS**

序號 Ref.No.	新圖號 new part No.	名稱 Part name	Name of parts	數量 Qty	備注 Note
1	7200A08001	選針盒組件	Needle selection box asm.	1	
2	7200A08002	選針盒	Needle selection box	1	
3	991008003	電綫	2-core cabtyre cord	1	
4	991008004	插針	Contact pin	1	
5	S144374006	螺釘	Screw SM11/64"x40 L=6	2	
6	991008005	電子夾綫器組件	Electroni conductor holder asm.	1	
7	991008006	插針	Contact pin	1	
8	S124762805	電子夾綫器固定螺釘	Screw SM3/16X28 L=5	1	

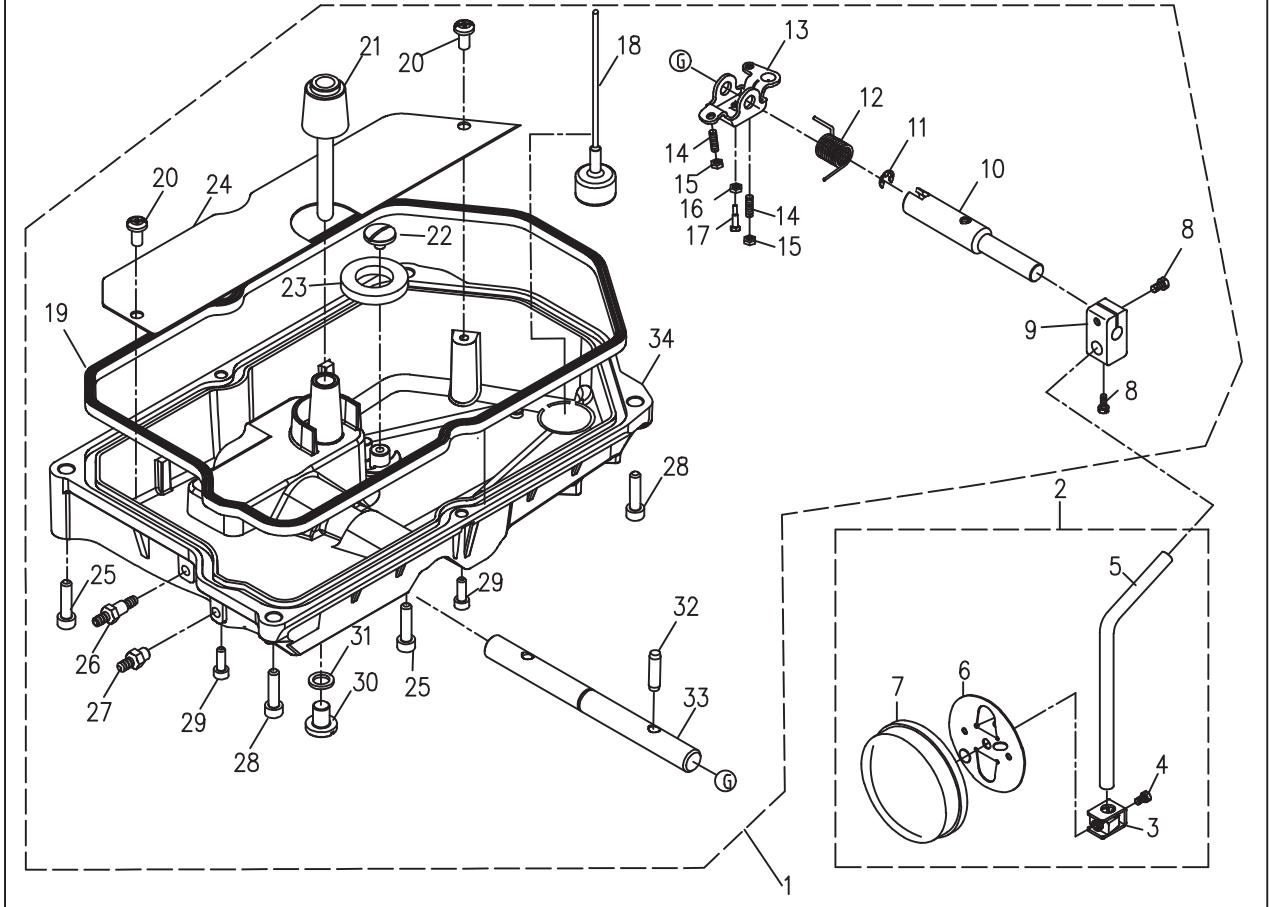
9. 潤滑/繞綫部件
 OIL LUBRICATION
 COMPONENTS



9.潤滑/繞綫部件/OIL LUBICATION COMPONENTS					
序號 Ref.No.	新圖號 new part No.	名稱 Part name	Name of parts	數量 Qty	備注 Note
1	991009001	油窗	Oil sight window	1	
2	991009002	油窗O型圈	Rubber ring	1	
3	S144374006	繞綫器驅動輪螺釘	Screw	2	
4	991009016	繞綫器驅動輪	Bobbin pulley	1	
5	280009005	進油管	Oil tube	1	
6	280009006	上軸供油管	Main shaft oil tube	1	
7	991009006	回油管	Oil return tube asm	1	
8	991009008	送布油綫	Oil wick	1	
9	S094762806	回油管夾螺釘	Screw 3/16x28 L=6	1	
10	991009007	回油管夾	Holder	1	
11	991009005	回油氈夾	Oil felt presser	1	
12	280009009	油泵部件	Lubricating oil pump asm	1	
12-1	991009012-4	油泵蓋螺釘	Screw D=3 l=10	3	
12-2	991009012-5	油泵蓋	Lubricating oil pump cover	1	
12-3	991009012-6	油泵葉輪托板	Oil pump impeller cover	1	
12-4	991009012-3	油泵葉輪	Oil pump impeller	1	
12-5	991009012-2	油泵體	Oil pump	1	
12-6	M070300508	油泵安裝螺釘	Screw M3 L=8	3	
12-7	991009012-10	下軸供油管	Hook driving shaft oil tube	1	
	991009012-10+	下軸供油管(四自動)	Hook driving shaft oil tube	1	
12-8	991009012-7	回油柱塞	Plunger	1	
12-9	991009012-8	柱塞簧	Plunger spring	1	
12-10	991009012-9	柱塞螺釘	Plunger screw	1	
12-11	991009012-1	油泵安裝板	Oil pump installing base	1	
12-12	280009012	小油管 (30長)	Rubber joint	1	
12-13	S074374010	油泵螺釘	Screw	1	
12-14	S075952810	油泵螺釘	Screw	1	
13	991009013	油泵連接螺柱	Oil pump support,large	1	
14	991009017	卡簧	Circlip	1	
15	280009015	回油管	Oil recovery tube	1	
16	280009016	油管夾	Oil pipe clamp	4	
17	991009019	油氈	Linoleum	1	
18	991009018	擋板	baffle	1	
	991009018S	擋板 (四自動)	baffle	1	
19	S094762806	擋板螺釘	baffle screw	1	
20	991009020	拾牙油綫	Oil line	1	

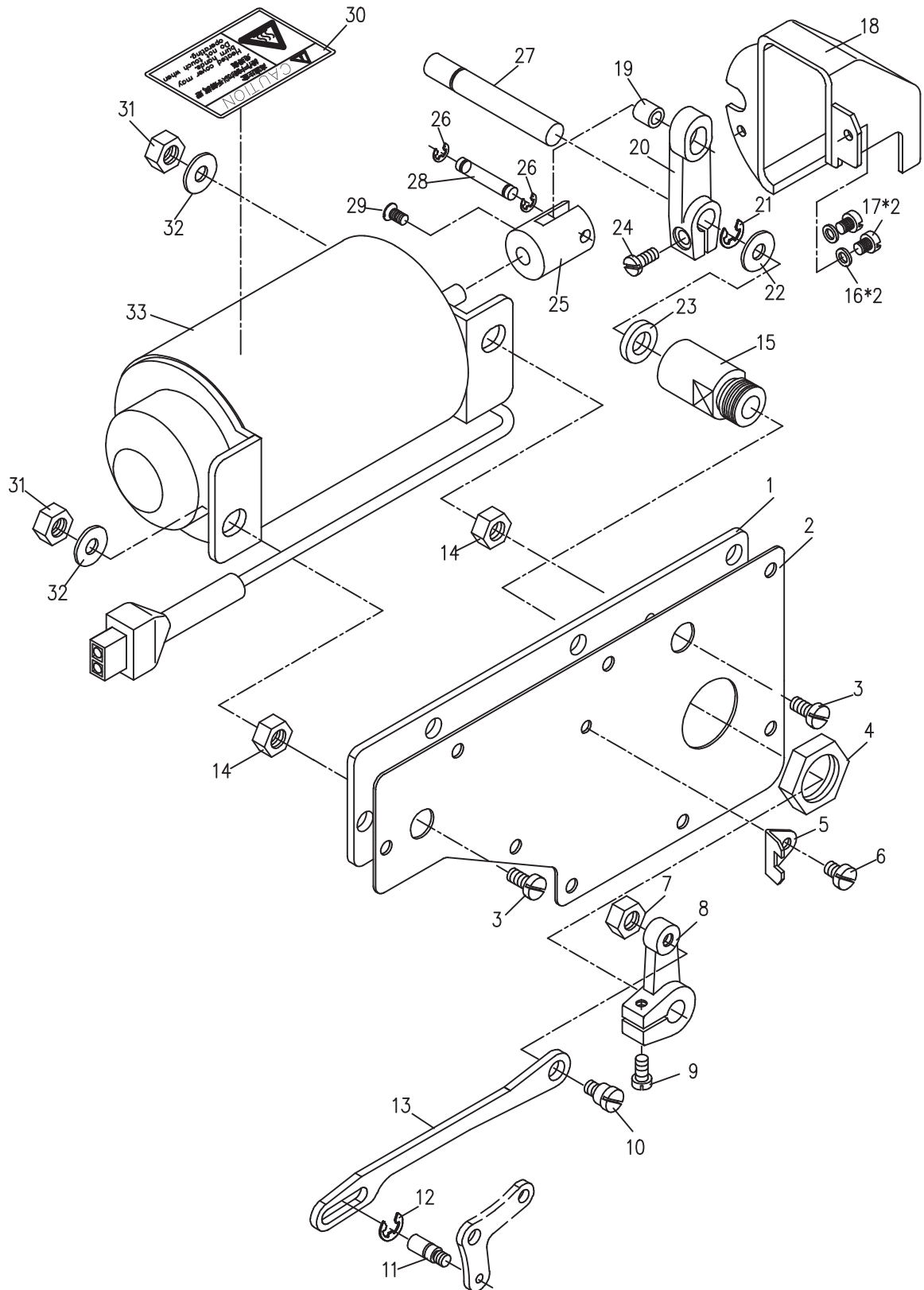
10. 油盤部件

OIL RESERVOIR COMPONENTS



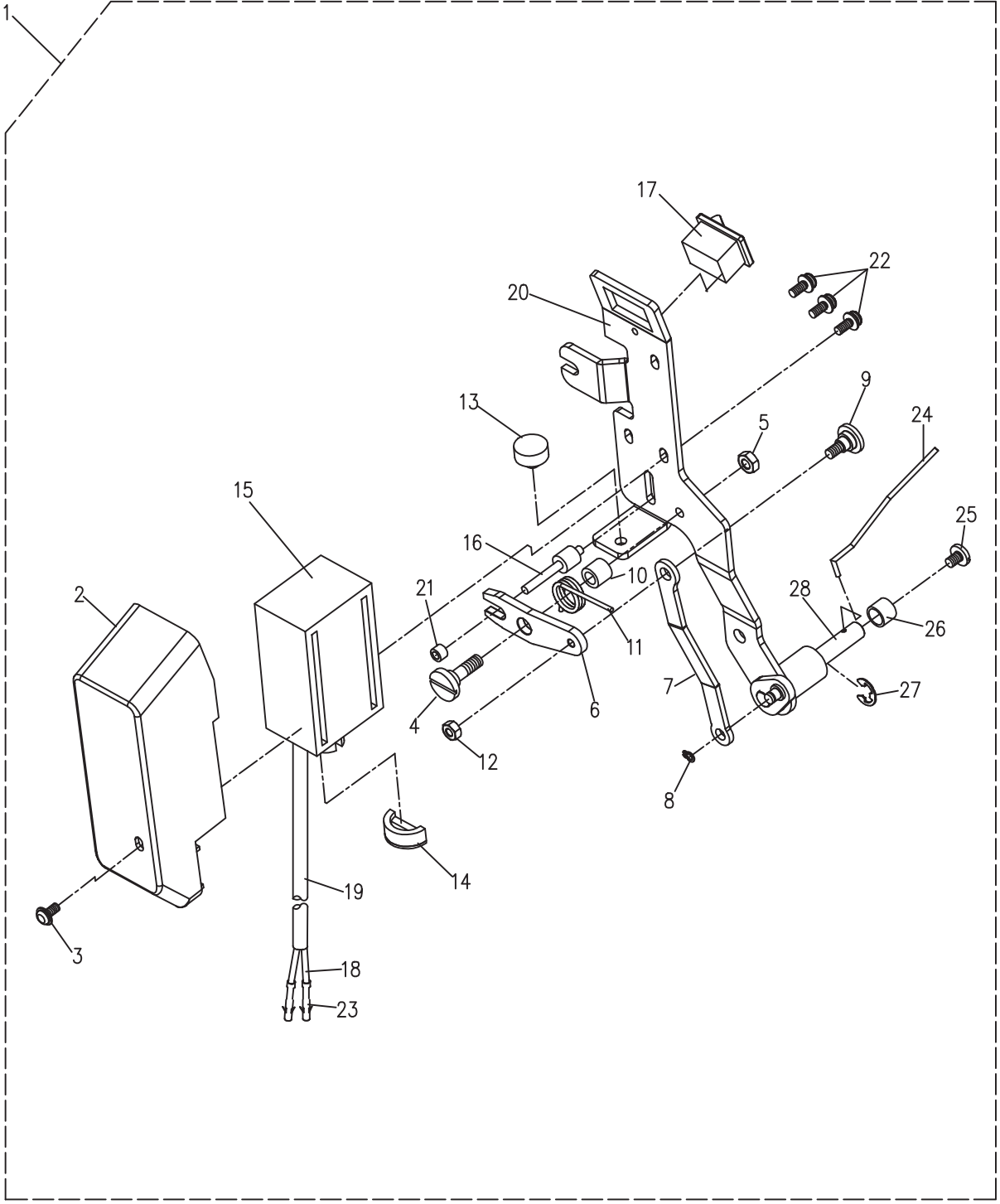
10.油盤部件/OIL RESERVOIR COMPONENTS					
序號 Ref.No.	新圖號 new part No.	名稱 Part name	Name of parts	數量 Qty	備注 Note
1	280010001	油盤組件	Oil reservoir asm	1	
2	991010016	操縱杆部件	Knee pan plate asm	1	
3	991010020	操縱杆接頭	Knee pan plate support	1	
4	M190601012	接頭螺釘	Screw M6 L=12	1	
5	991010017	操縱杆	Knee pan upright shaft	1	
6	991010019	操縱板	Knee pan plate	1	
7	991010016	操縱杆軟墊	Knee pan plate cover	1	
8	991010010	操縱杆接頭螺釘	Screw	2	
9	991010009	拾壓脚操縱杆接頭	Vertical shaft fitting arm	1	
10	280010010	拾壓脚軸連接杆	Lifting the foot shaft connecting rod	1	
11	280010011	拾壓脚軸開口擋圈	E-ring 10	1	
12	280010012	雙向曲柄扭簧	Spring	1	
13	280010013	拾壓脚雙向曲柄	Knee lifting rotating arm	1	
14	M120601030	雙向曲柄限位調節螺釘	Screw M6 L=30	2	
15	N210601006	雙向曲柄限位調節螺母	Nut M6	2	
16	N210601006	雙向曲柄螺母	Nut M6	1	
17	M190601018	雙向曲柄螺釘	Screw M6 L=17.5	1	
18	280010018	油浮標	Floating oil	1	
19	280010019	油盤密封墊	Oil pan gasket	1	
20	S073574007	擋油板固定螺釘	Screw M4 L=8	2	
21	280010023	拾壓脚蘑菇頂杆	Knee lifter push rod	1	
22	280010024	磁鐵固定螺釘	Screw SM4.76X28 L	1	
23	280010025	磁鐵	Magnet	1	
24	280010026	擋油板	Oil baffle plate	1	
25	M180601040	油盤安裝螺釘A	Screw	2	
26	280010028	供油接頭	Oil supply joint	1	
27	280010029	回油接頭	Return oil joint	1	
28	M180601020	油盤安裝螺釘B	Screw	2	
29	M180400714	油盤安裝螺釘C	Screw	2	
30	280010032	排油螺釘	Screw	1	
31	720001025	排油螺釘密封圈	Sealing ring	1	
32	280010036	拾壓脚軸銷	Pin	1	
33	280010037	拾壓脚軸	Lifting foot shaft	1	
34	280010038	油盤	Oil pan	1	

11. 自動抬壓腳組件(外置式)
AUTO LIFTER COMPONENTS(External)



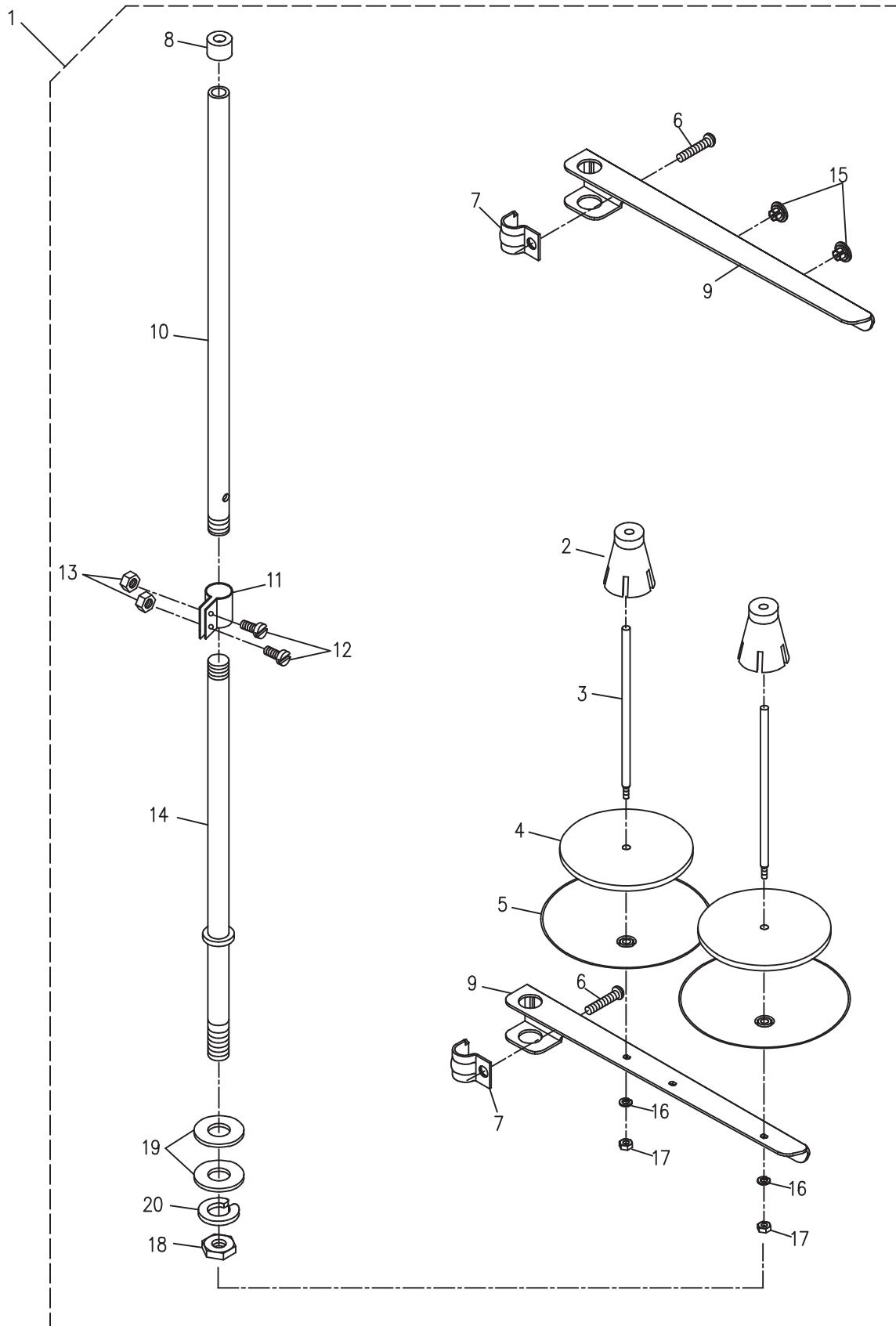
11.自動拾壓腳組件（外置式）/ AUTO LIFTER COMPONENTS(External)					
序號 Ref.No.	新圖號 new part No.	名稱 Part name	Name of parts	數量 Qty	備注 Note
1	7200A11001	後窗板	After the shutters	1	
2	7200A11002	後窗板墊	The shutters pad	1	
3	S095952812	後窗板螺釘	Screw	2	
4	N210161504	拾壓腳軸套螺母	Nut	1	
5	991011005	拾壓腳杠杆限位板	Lifting lever limit plate	1	
6	991011006	拾壓腳杠杆限位板螺釘	Screw	1	
7	N215952803	螺母	Nut	1	
8	991011008	拾壓腳杠杆後曲柄	Lift the lever to drive the crank	1	
9	S184762812	螺釘	Screw	1	
10	991011010	軸位螺釘	Screw	1	
11	991011011	拾壓腳後杠杆連接銷	Pin	1	
12	E320501008	卡簧	Circlip	1	
13	991011013	拾壓腳後杠杆連接杆	Lever lever after lifting the foot	1	
14	991011014	螺母	Nut	2	
15	991011015	拾壓腳軸套	Presser foot collar	1	
16	N220450805	墊片	Washer	2	
17	M070400705	螺釘	Screw	2	
18	991011018	防護罩	shield	1	
19	991011019	滑塊	The slider	1	
20	991011020	拾壓腳杠杆前曲柄	The crank	1	
21	E320801610	卡簧	Circlip	1	
22	W220951810	墊片	Washer	1	
23	991011023	油封	Oil seal	1	
24	991011024	螺釘	Screw	1	
25	991011025	電磁鐵接頭	Fork type connector	1	
26	E320400908	卡簧	Circlip	2	
27	991011027	拾壓腳後杠杆驅動軸	Lift the pin drive shaft	1	
28	991011028	銷	Pin	1	
29	991011029	螺釘	Screw	1	
30	991011030	警示標籤	Security label	1	
31	720001025	螺母	Nut	2	
32	W220681910	墊片	Washer	2	
33	991011033	拾壓腳電磁鐵	electromagnet	1	

12. 撥綫部件
THREAD DRAWING UNIT



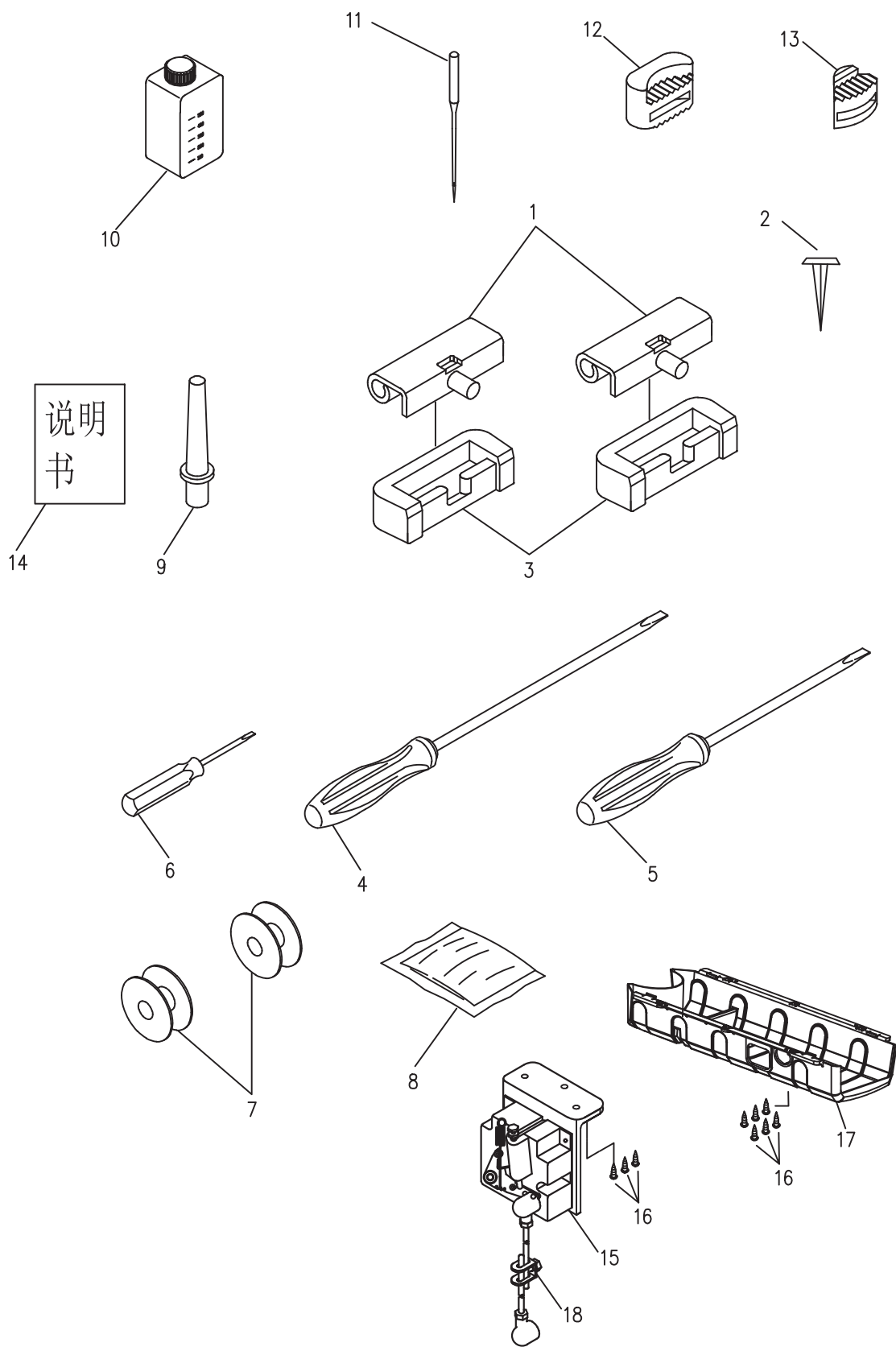
12.撥綫部件/THREAD DRAWING UNIT					
序號 Ref.No.	新圖號 new part No.	名稱 Part name	Name of parts	數量 Qty	備注 Note
1	991012001	撥綫部件	Wiper asm.	1	
2	991012002	撥綫支架殼	Wiper cover	1	
3	991012003	撥綫殼緊固螺釘	Screw M3	1	
4	991012004	傳動板軸位螺釘	Hinge screw	1	
5	N213574003	螺母	Nut 9/64x40	1	
6	991012006	撥綫傳動板	Wiper link A	1	
7	991012007	撥綫拉杆	Wiper link B	1	
8	991012008	擋圈	E-ring	1	
9	991012009	拉杆軸位連接螺釘	Wiper link B,hinge screw	1	
10	991012010	傳動板滾柱	Wiper hinge screw collar	1	
11	991012011	傳動板復位簧	Wiper spring	1	
12	N214374003	傳動板軸位螺母	Nut 11/64x40	1	
13	991012013	鐵芯定位墊	Wiper rubber A	1	
14	991012014	鐵芯月牙墊	Wiper rubber B	1	
15	991012015	撥綫電磁鐵組件	Wiper solenoid	1	
16	991012016	傳動銷	Wiper solenoid shaft	1	
17	991012017	開關	Power switch	1	
18	991012018	導綫	Electric wire	1	
19	991012019	導綫管	2-core cabtyre cord	1	
20	991012020	撥綫座組件	Wiper base asm	1	
21	991012021	傳動銷定位塊	Wiper link collar	1	
22	991012022	電磁鐵緊固螺釘	Screw	3	
23	991012023	插針	pin contact	2	
24	991012024	撥綫杆	Wiper	1	
25	S073574005	撥綫杆緊固螺釘	Screw 9/64X40 L=5	1	
26	991012026	撥綫杆緊固套	Wiper collar	1	
27	991012027	撥綫驅動軸擋圈	E-ring	1	
28	991012028	撥綫驅動軸	Wiper driving shaft asm	1	

13. 過綫架部件 THREAD STAND COMPONENTS

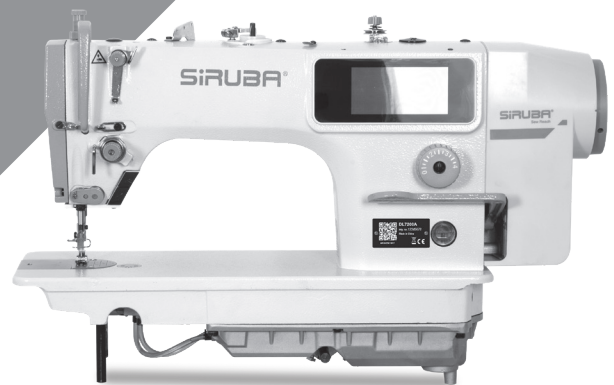


13.過綫架部件/THREAD STAND COMPONENTS					
序號 Ref.No.	新圖號 new part No.	名稱 Part name	Name of parts	數量 Qty	備注 Note
1	991013001	過綫架部件	Thread stand asm	1	
2	991013002	綫團防鬆墊	Spool retainer	2	
3	991013003	綫盤釘	Spool pin	2	
4	991013004	綫盤輪墊	Spool rest cushion	2	
5	991013005	綫盤	Spool rest	2	
6	M090601016	綫架過綫夾螺釘	Screw M6 × 16	2	
7	991013007	綫架過綫夾	Thread guide arm joint	2	
8	991013008	綫架杆頂防護橡皮	Spool rest rod rubber cap	1	
9	991013009	綫架過綫杆	Spool rest arm	2	
10	991013010	綫架杆上節	Spool rest rod upper	1	
11	991013011	接架杆接頭	Spool rest rod joint	1	
12	M090500814	接架杆接頭螺釘	Screw M5 × 14	2	
13	N210500805	接架杆接頭螺母	Nut M5	2	
14	991013014	綫架杆下節	Spool rest rod lower	1	
15	991013015	過綫圈	Thread guide	2	
16	991013016	綫盤釘彈簧墊	Spring washer	2	
17	991013017	綫盤釘螺母	Nut M5	2	
18	991013018	綫架杆緊固螺母	Nut M6 × 1.5	1	
19	991013019	綫架杆緊固螺母墊圈	Washer 16 × 30 × 2.6	2	
20	991013020	緊固螺母彈簧墊圈	Spring washer	1	

14. 附件
ACCESSORIES



14.附件/ACCESSORIES					
序號 Ref.No.	新圖號 new part No.	名稱 Part name	Name of parts	數量 Qty	備注 Note
1	991014001	機頭連接鉤組件	Machine hinge plate asm.	2	
2	991014002	機頭連接鉤座釘	Nail	4	
3	991014003	機頭連接鉤座	Machine hinge plate	2	
4	991014004	螺絲刀 (大)	Screw driver,large	1	
5	991014005	螺絲刀 (中)	Screw driver.mendium	1	
6	991014006	螺絲刀 (小)	Screw driver.small	1	
7	991014007	梭心	Bobbin	2	
8	991014008	機頭罩	Macgube head cover	1	
9	991014009	機頭支柱	Macgube rest cover	1	
10	991014010	油箱部件	Oil reservoir asm.	1	
11	991014011	機針 DBx1 #14	Needle DBx1 #14	2	
	991014011H	機針 DPx5 #21	Needle DPx5 #21	4	
12	991014012	防震墊(A)	quakeproof washer A	2	
13	991014013	防震墊(B)	quakeproof washer B	2	
14	7200A14014	說明書	Instruction book	1	
15	991014017	控速器	speed controller	1	
16	991014018	控速器托架安裝螺釘	speed controller screw	9	
17	280015019	托盤	Tray	1	
18	991014019	控速器拉杆組件	speed controller pull rod	1	



高林股份有限公司
KAULIN MFG. CO., LTD.

由於對產品的改良及更新，本產品零件圖及外觀的修改恕不事先通知！

The specification and/or appearances of the equipment described in this parts list are subject to change because of modification which will without previous notice.

7200A14014.FEB.2021