

SIRUBA

銀箭牌
WWW.SIRUBA.COM



You Tube



YOUKU



ASL-AGS100

皱褶车缝平缝机

Automatic Gathering Sewing Machine



产品特点

FEATURES

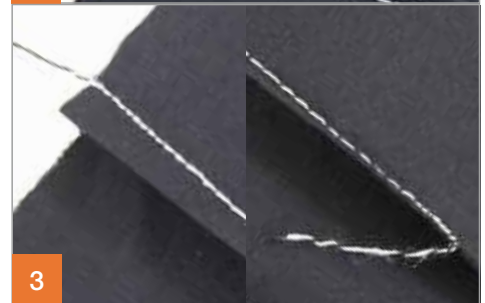
1 多功能控制面板
操作屏简单明了，最大限度简化操作。
Multi-Functional Control Panel
The control panel is very user friendly to operate.

2 空车出线
车缝效果佳且不易脱线。
Stitching
Having nice sewing quality,the thread is not easy to fall off.

3 起针 / 终缝密缝
缩小起缝/终缝针距使省位缝合更加牢固。
Condense stitching for both the start and end of sewing
Reduce the stitch distance for both start & end of sewing to make finished product more secure.

4 收料功能
成捆裤片夹具、放料台、平顺装置优化工作区域提高效率。
Material Collection Function
Clamp for bundle trouser pieces, placement table , nice working area for efficiency improving.

5 一键更换模具
快速拆装模具、适用于不同版型模具，快速更换或机器维护保养。
One-button mold replacement
Quick replacement for various molds and machine maintenance.



规格

SPECIFICATIONS

型号 Model	ASL-AGS100		
缝纫机机头 Machine Head	SiRUBA DL7500		
车缝范围 Sewing Range	130 mm (可根据需求定制模具长度至 160mm) 130 mm (It is applicable to customize up to 160 mm)		
缝纫针距 Stitch Length	1~5 mm	车缝速度 Sewing Speed	3900 SPM (Max)
气压 Air Pressure	0.5 MPa	电源电压 Power Supply	Single Phase 1Φ AC200~240V
使用针型 Needle Type	DP x 17	机器尺寸 Dimensions	(W)1050 × (D)950 × (H)1100mm
生产效率 Production Capacity	1000~1300 道次 / 小时 1000 ~ 1300 Gathering / Hour		



由於对产品的改良及更新，本产品型录中之产品规格及外观的修改恕不事先通知
The specification and/or appearances of the equipment described in this catalogue are subject to change without previous notice because of modification.

C.S2023-29. AUG. 2023