

数据撷取传输盒DATA CAPTURE BOX



SMS

SMS PRODUCTION MANAGEMENT SYSTEM

生产管理系统

规格 SPECIFICATIONS

型号 Model	S-28	S-30
处理器 Processor	8-bit 处理器8-bit	32-bit 处理器32-bit
Wi-Fi Protocol	802.11b/g, 2.4GHz	802.11b/g/n, 2.4GHz
LCD显示 LCD Display	16字元*2排 16 characters x 2 rows	16字元*4排 (可支援多国语言) 16 characters x 4 rows Multi-Language Support
操作按键 Control Panel	简易面板 BasicType	简易 + 数字面板 Basic Type + Numeric Keys
计件开关 Counter Switch	外接 External Switch	内建 (3组) Built in (3 sets)
数位输入 Digital Input	2组 (无隔离) 2 sets (non-isolated)	4组 (有隔离) 4 sets (isolated)
类比输入 Analog Output	0组 0 set	1组 1 set
串列通讯 Serial Communication	1组 (UART) 1 set (UART)	1组 (RS232) / 1组 (RS485) 1 set (RS232) / 1 set (RS485)
蜂鸣器 Buzzer	无 N/A	有 Yes
microSD	1组 (8G) 1 set (8G)	1组 (8G) 1 set (8G)
USB程式更新 USB Software Update	无 N/A	有 (Device) Yes (Device)
独立电源开关 Independent Power Switch	无 N/A	有 Yes
适用性 Application	外部讯号撷取, 适合大部分厂牌电控箱使用 External signal capture, works with most control systems	通讯介面传输, 搭配固定机型型号使用 Communication interface receiver/transmitter, works with specific machine models

● 产线管理

产品款式, 工序内容的建立自动取出针数与切线数
来计算4种不同计算方式

● Production Line Management

Product style, working procedure setting. Automatically using
Stitch and trim to calculate 4 different types of calculation.

● 设备管理

设备状态, 故障, 维修统计与纪录
设备管理, 监测, 运行效率统计

● Equipment Management

Equipment status, error and maintenance history
Equipment monitoring, working statistics history

● 即时生产进度

即时统计生产效能与进度
数字图表化显示

● Real Time Display

Real-time production status
Chart Display

● 生产统计

生产线日产量与月产量
效率历史查询, 目标达标率

● Production Statistics

Production daily or monthly report
Efficiency and target reaching report

● 设备整合

可连结各大品牌, 不同机种, 撷取数据
针车, 裁布机, 包装机...等

● Equipment Integration

Connect and capture data from different brand, different machine Like
AMS, cutting machine, packing machine.....etc.

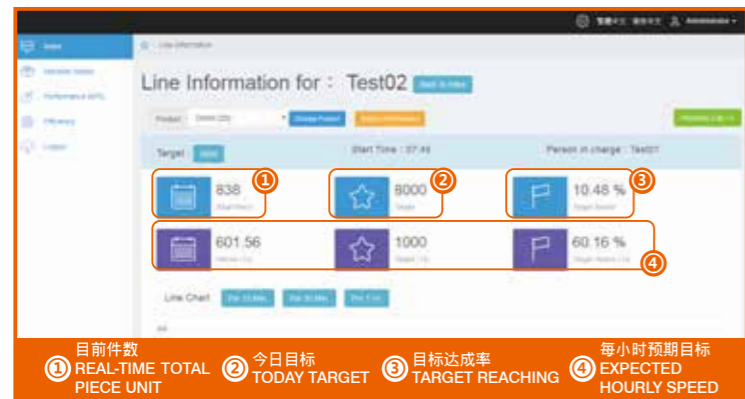
SMS生产管理系统

SMS PRODUCTION MANAGEMENT SYSTEM

网络环境图 NETWORK ARCHITECTURE



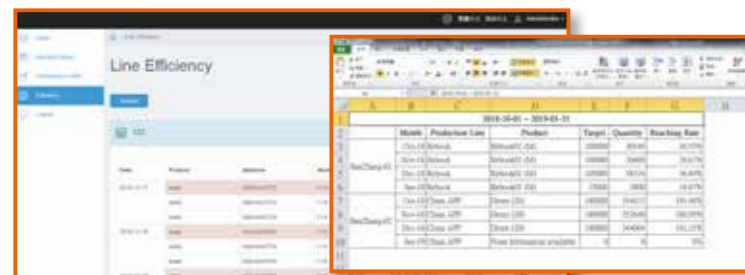
SMS产线资讯 PRODUCTION LINE INFORMATION



资讯图可视化 DATA VISUALIZATION



SMS工作绩效月报表 PERFORMANCE MONTHLY REPORT



主机硬体需求 SERVER SPECIFICATION REQUIREMENT

配备项目 ITEM	建议配备 REQUIREMENT
CPU	2.0GHz / 2M 快取 2.0GHz / 2M catch
主记忆体 RAM	4 GB 以上 4 GB above
作业系统 Operating System	Windows 7 以上 (目前无支援 Mac OS) Windows 7 above (NO support Mac OS)
硬碟 HDD	7200 rpm (可用空间100GB以上) 7200 rpm (100GB free space)
Wi-Fi 分享器 (注1.) Wi-Fi AP / Router (Note 1.)	支援 802.11 b/g 6dBi 双天线以上 Support 802.11 b/g Antenna x 2 above

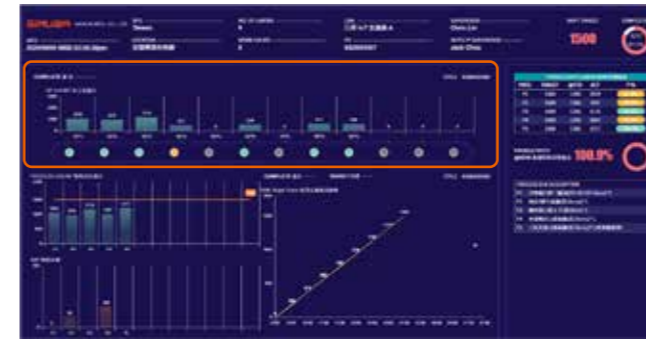
※网路分享器最终网路架设方式及数量, 需依实际环境而定
※The final network architecture depends on the actual environment

可连结其他设备 EXTERNAL DEVICE CONNECT

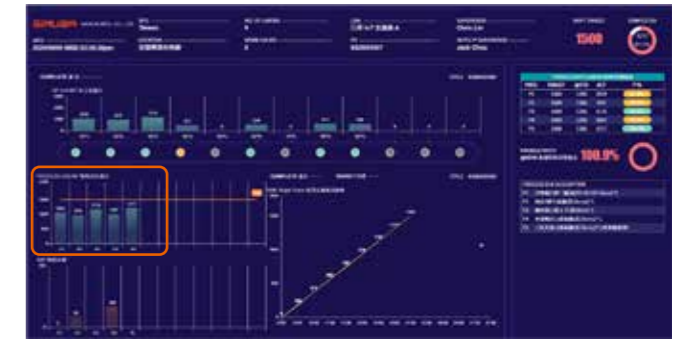


制程产出监控

LINE PRODUCTION MONITOR



1 即时各工序产量:
透过“按键”装置回报产量, 或“车缝针数”, “切刀数”自动估算。
Real time operation output:
Via “button” device feeds back output, or “sewing stitches”, “cutting numbers” to calculate automatically.



2 即时各制程产量:
指一个制程, 由多个工序生产的产量总和。
Real time manufacturing process output:
It means one manufacturing process is sum of output produced by various operations.



3 WIP 在制件数:
指前制程移转过来, 尚未转移到下制程的数量。
WIP Number of work in progress:
Transfer from the previous manufacturing process, yet to transfer to the next process.



4 每小时计画与实际产出趋势图。
Trend chart of planned and actual output (per hour).



5 每个制程的即时产出目标达成率。
Real time output hit rate of each manufacturing process.



6 整线即时产出目标达成率。
Whole line real time output hit rate.



7 工序作业效率分析图:
GSD: 报价或IE量测单位工时 (SAM, 秒数/件)
NVA: 浮馀工时 (秒/件)
VA: 设备缝制移动工时 (秒/件)
CT: 实际每件作业周期工时 (秒)
TT: Tack Time 线平衡最佳理论值

Operation efficiency analysis chart:
GSD: Quotation or IE measures unit hours (SAM, seconds/piece)
NVA: Extra working hours (seconds/piece)
VA: Equipment operating utilization ours(seconds/piece)
CT: Actual working hours(per piece) cycle (seconds)
TT: The best theoretical value of line balance