

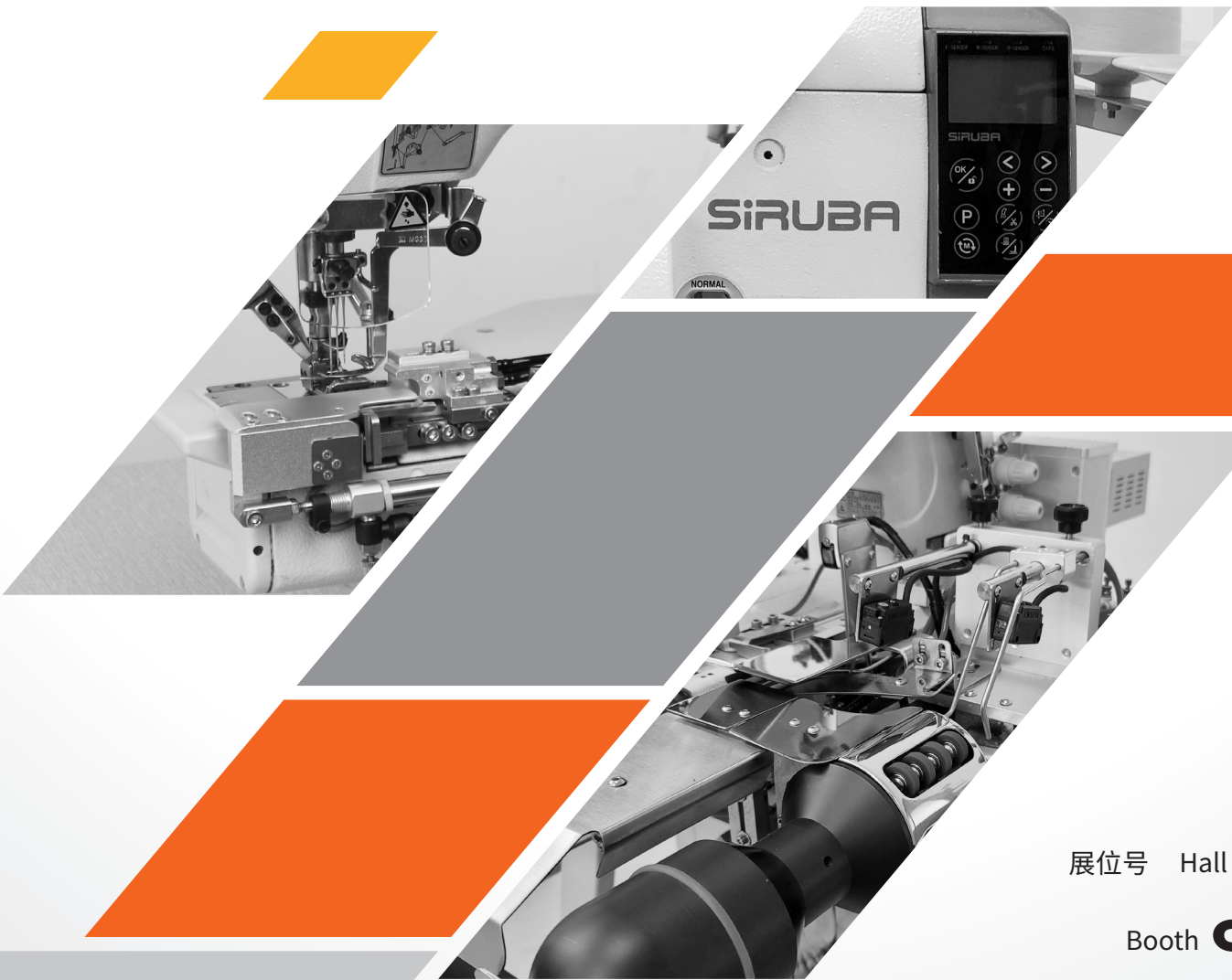
SIRUBA

銀箭牌

# 智慧缝纫 高效生产

INTELLIGENT SEWING

EFFICIENT PRODUCTION



展位号 Hall **W2**

Booth **C50**



CISMA 专页

CISMA 专页



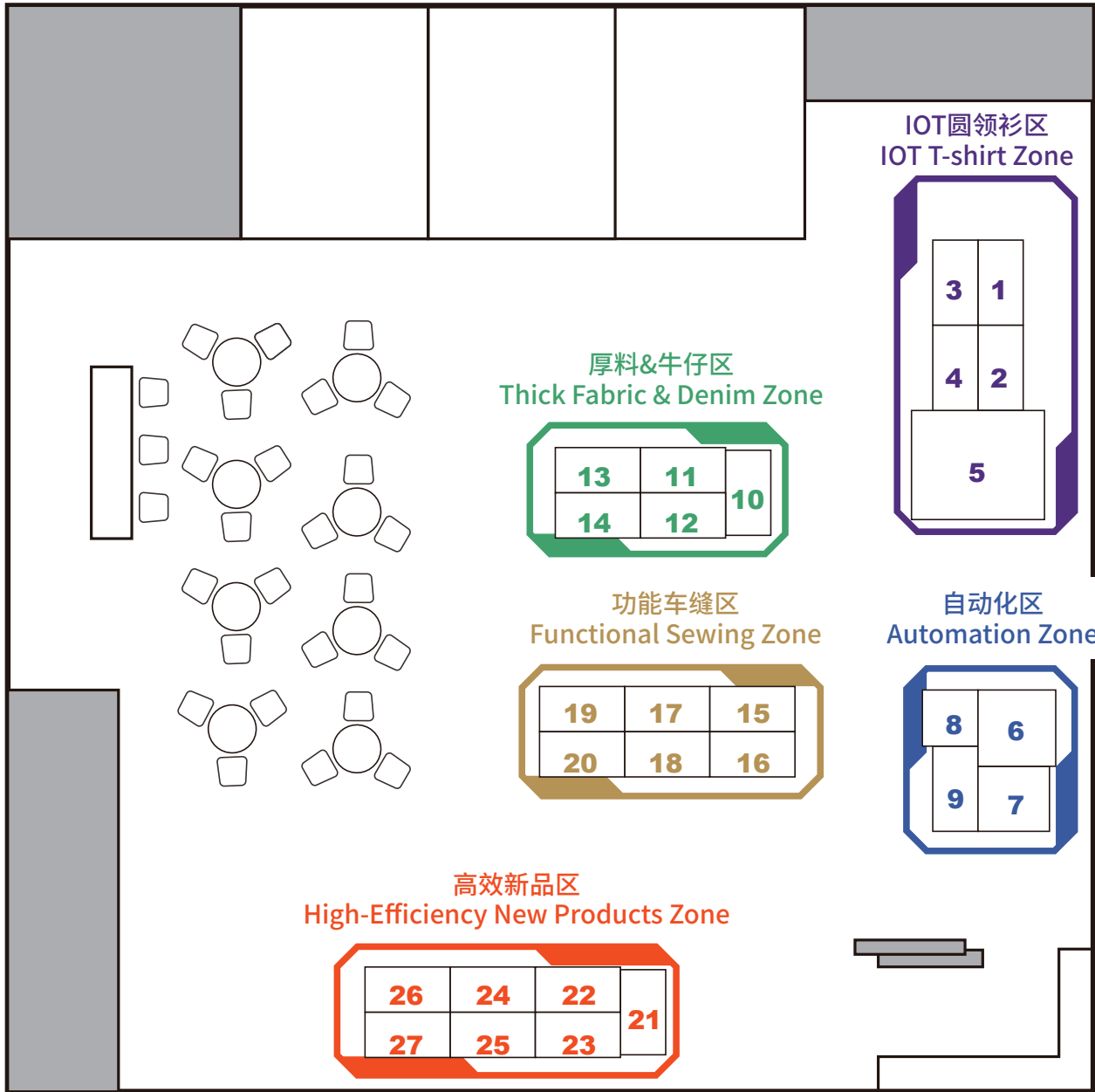
2023 CISMA

CISMA Page



2023 综合目錄

2023 综合目錄  
General catalogue



機種目錄

Machine List

分组 Category	序號 No.	型號 Model	說明 Description
IOT圆领衫区 IOT T-shirt Zone	1	747LQT-514M-3-24/ ECM+KB301	超高速电脑包缝机 搭配步进式切刀及简易防 卷边装置 Ultra High Speed Overlock Sewing Machine with Stepping Motor Drive Tape/Thread Cutter and Anti-curlly Edge Binder
	2	C007KP-W122-356/ CAH/UTP	超高速筒型绷缝机 搭配半自动下摆装置 Ultra High Speed Cylinder Bed Interlock Sewing Machine with Semi-auto Bottom Hemming Device
	3	747KST/ACS200	自动上圆领机 Automatic Circular Collar Attaching Machine
	4	S007KD-W812A-356/ SRL/UTT	细筒绷缝机 搭配左切刀装置 Small Cylinder Bed Interlock Sewing Machine with Left Side Fabric Trimmer
	5	ASC-TBH200	自动T恤下摆折缝机 Automatic T-shirt Bottom Hemming Machine

分组 Category	序號 No.	型號 Model		說明 Description
自动化区 Automation Zone	6	ASL-AGS100	皱褶车缝平缝机	Automatic Gathering Sewing Machine
	7	ASK-ASM101	自动罗纹上袖口/裤脚机	Automatic Ribbed Cuff Attaching Machine
	8	ASP-CBH100	自动连续锁眼机	Automatic Buttonholing Sewing Machine
	9	ASP-CBS100	自动连续钉扣机	Automatic Button Sewing Machine
厚料&牛仔区 Thick Fabric & Denim Zone	10	NC008-0464-254/JD/ HPR+B530U	针送牛仔裤腰车 搭配跳针装置	Needle Feed Double Chainstitch Sewing Machine with Skip Stitch Device for Jeans Waistband
	11	DL3883-64AP	直驱三针链缝平车 搭配气动皮带拖轮	Chainstitch Sewing Machine with Pneumatic Puller
	12	757KT-516X-3-56/CT	高速上送特厚料包缝机	High Speed Top Feed Overlock Sewing Machine for Extra Heavy Material
	13	FA007D-364H/2PL	三针臂式环缝车 搭配直驱双拖轮	Three Needles Feed-off-the-arm Double Chainstitch Sewing Machine with Mechanical Direct Drive Double Puller
	14	767L-644X-3-528	高速宽边距包缝机	High Speed Wide Overedge Overlock Sewing Machine
功能车缝区 Functional Sewing Zone	15	C007L-W122-356/RH/ RCH-3M/UTP+E5356EF	超高速弧筒型绷缝机 搭配高弹面料专用针板	Ultra High Speed Arc Shape Cylinder Bed Interlock Sewing Machine for Highly Elastic Fabrics
	16	747L-503M-2-23	鱼骨缝电脑包缝机	Fishbone Stitch Overlock Sewing Machine
	17	U007-W123-356/UCH- 3M/UTT	极细筒绷缝机	Ultra Small Cylinder Bed Interlock Sewing Machine
	18	ASO-FPM100	鱼骨扒缝机	Fishbone-seam Peeling Machine
	19	747L-514M-3-24/BKF1	超高速电脑包缝机 搭配自动包线头装置	Ultra High Speed Overlock Sewing Machine with Fully Automatic Back Latching Seaming Device
	20	747L-514M-3-24/VT	超高速电脑包缝机 搭配防卷边装置	Ultra High Speed Overlock Sewing Machine with Anti-curly Edge Device
高效新品区 High- efficiency New Products Zone	21	VC008B-12064P/VAR/ BS-VUT+LZL-TCC-1	高速筒型多针缝纫机 搭配切线与专利加固缝装 置与修线头装置	High Speed Type Multi-needle Cylinder Bed Double Chainstitch Machine with Thread Cutter and Patented Condensed Stitch Device and Thread-end Collector
	22	DT828L-45-064M/C-13	双步进双针角缝 电脑平缝车	Computerized Double Needle Lockstitch Machine with Double Stepping Motor and Split Needle Bar
	23	747LQT-514M-3-24/ LFM+LFA	超高速电脑包缝机 搭配步进送带装置	Ultra High Speed Overlock Sewing Machine with Electric Elastic Tape Feeding Device
	24	DL7500-RNM1-64-16	双步进带刀针送 电脑触控平缝车	Computerized Needle Feed Lockstitch Machine with Double Stepping Motor and Touch Panel and Edge Cutter
	25	C007LQT-W122-356/ CH/UTM	超高速机电一体 步进筒型绷缝机	Ultra High Speed Mechatronic Stepping Motor Cylinder Bed Interlock Sewing Machine
	26	D007SP-460-02-ET/ AW1	四针六线曲臂式并缝机	4 Needle 6 Thread Feed-off-the-arm Flatseamer
	27	C007L-W532-356/CR/ CX/UTP/CL/RLP1	超高速筒型绷缝机 搭配右切刀环型松紧带裤 头接缝装置	Ultra High Speed Cylinder Bed Interlock Sewing Machine with Tubular Jacquard Elastic Waistband Attaching and Right Side Fabric Trimmer

## 700LQT/ECM

**超高速步进电脑包缝机 搭配简易防卷边**

一体式电控设计，步进马达驱动切线和自动抬压脚，搭配高速稳定的伺服马达，使整机运作平稳、轻顺且流畅，减少了操作人员的工作负担。搭配上鲜明的企业色彩，不仅在性能上优越，在外观上也令人印象深刻。搭配简易防卷边配件，轻松解决卷曲布料的车缝。

**Ultra High Speed Overlock Sewing Machine with Anti-curly Edge Binder**

Integrated control box design. Stepping motor driven trimming and automatic Presser foot Lift and high-speed servo motor ensure the stability of operation, effectively reducing the workload for operators. This machine come with vivid corporate color scheme, it not only excels in performance but also leaves a lasting impression with its appearance. Simple anti curly selvedge device effectively solves curly edge problem.



## C007KP/CAH

**超高速筒型绷缝机 搭配半自动下摆装置**

透过特殊设计的吹风及导布结构辅助，让下摆车缝的工段更简单，同时保证缝制品品质，新手也能轻松车缝出完全符合生产标准之成品。另一方面，CAH装置调整简单，使用容易，可有效减少成衣产线换款时机器调整时间，适用于多数筒型的时间恤下摆车缝。效率高、品质稳、新手友善。

**Ultra High Speed Cylinder Bed Interlock Sewing Machine with Semi-auto Bottom Hemming Device**

Through a specially designed air blowing and fabric guiding structure, the sewing process of the hemming section becomes simpler, and the sewing quality is ensured. Even beginners can easily sew products that meet production standards. On the other hand, the CAH device is easy to adjust and use, effectively reducing machine setup time when changing clothing styles on the production line. It is suitable for hemming the majority of T-shirt styles. High efficiency, stable quality, and beginner-friendly.

## ASC-TBH200

**自动时间恤下摆折缝机**

适用于筒状或已包边缝的时间恤全自动下摆车缝，专利导向轮模拟人工手势，面料适用性广，再加上专利吹气倒缝功能，实现多骨位同方向倒缝。设备自带衣服大小码自动调节功能，避免生产过程中出现混码导致缝制错乱。一人操作两台的生产模式，可有效提升成衣制造生产效率。

**Automatic T-shirt Bottom Hemming Machine**

Fully automatic hemming machine is suitable for tubular section or the edge-stitched hem. It uses patented guide wheels to simulate operator's hand movements, making it versatile for a wide range of fabric types. Additionally, it features a patented blowing function, allowing to lay the side seams to the same direction.

Equipped with an automatic adjustment function for clothing size, preventing sewing errors due to mixed sizes during production. One person operating two machines can effectively enhance the efficiency of production.





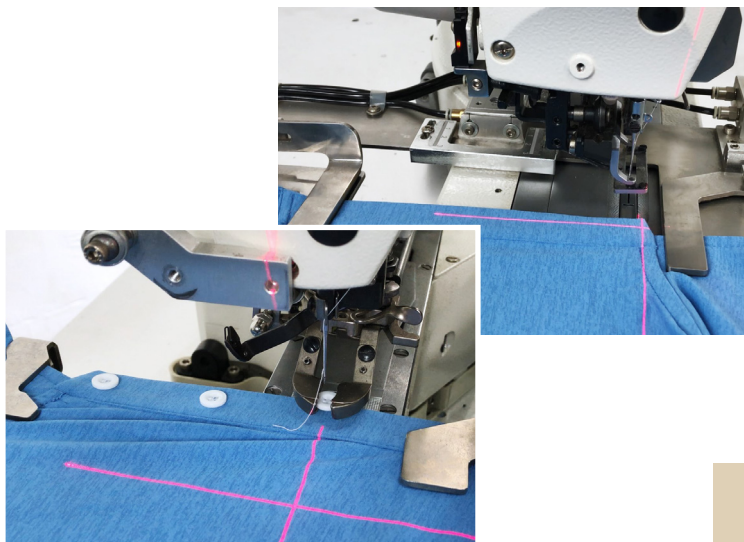
## ASP-CBS100 + ASP-CBH100

### 自动连续钉扣机 + 自动连续锁眼机

专为极衫前领锁眼及钉扣设计之自动机，自动量测距离以及自动转向，节省下量距离与做记号所花费的时间，一对二的操作模式，可提升生产效率且有自动化带来的稳定品质。

### Automatic Button Sewing Machine + Automatic Buttonholing Sewing Machine

An automatic machine designed specifically for the button sewing and holing section on polo shirt plackets. It automatically measures distances and changes direction, instead of manually measuring and marking by operators. With a one-to-two operation mode, it can enhance production efficiency. Through automation, it can ensure the consistent quality.



## C007L/RH/RCH-3M/UTP + E5356EF

### 超高速弧筒型绷缝机 搭配高弹面料专用针板

平缝、折下摆、倒骨功能三合一，改良后的弧形筒型设计让送料的缝制过程更顺畅，且双天坪挑线控线组缝制厚、薄布料皆适用，除了内缩式床台使缝制物更靠近针孔车缝时更顺手之外，直感式的差动送具让操作上更加准确。穿着舒适是现在主流诉求，弹性布料非常适合于制作运动服、瑜伽服和休闲服，本机搭配上高弹面料专用针板，有效克服弹性面料车缝会遇到起拱不美观的问题。

### Ultra High Speed Arc Shape Cylinder Bed Interlock Sewing Machine for Highly Elastic Fabrics

General seaming/bottom hemming/cover stitch 3-in-1 multi-function. Shortened cylinder bed leads easier sewing process, dual thread take-up mechanism is suitable for heavy and light fabric, and the differential feed dog design is easier to adjust.

Wearing comfort is the current mainstream demand. Elastic fabrics are very suitable for making sportswear, yoga wear, and casual wear. This machine comes with a needle plate for high-elastic fabrics, it effectively overcomes the problem of puckering in the seams of elastic fabrics.

## C007LQT/UTM

### 超高速机电一体步进筒型绷缝机

一体式电控设计，装配调整便利，整机运作平顺，低噪音，低震动。使用步进马达驱动自动剪线与抬压脚，不受气压限制，声音轻顺，力量足。

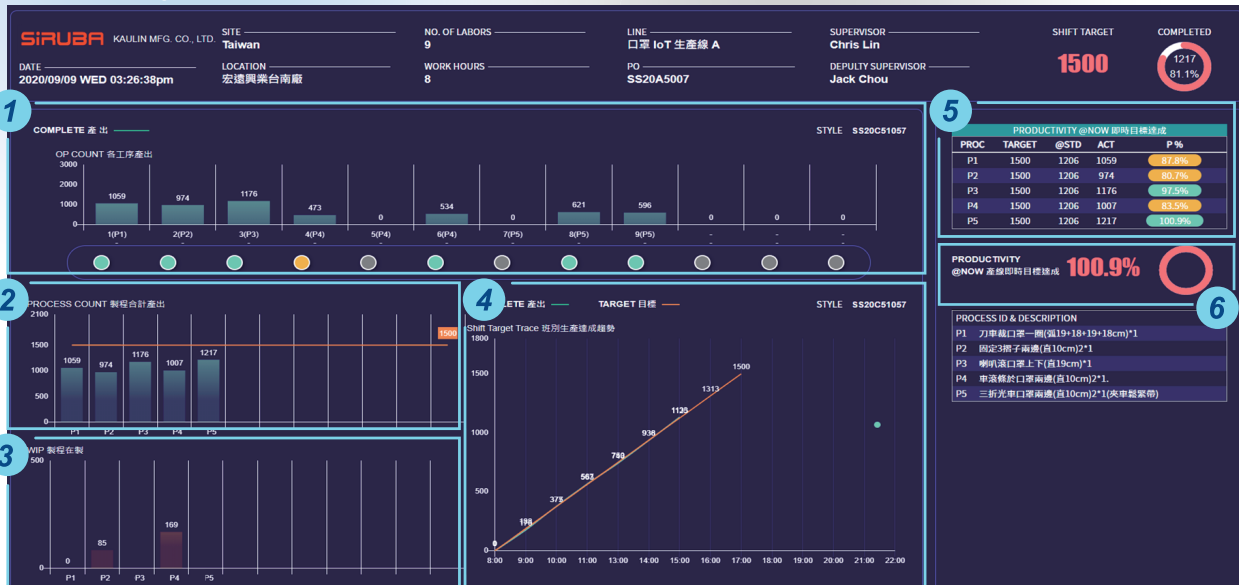
### Ultra High Speed Mechatronic Stepping Motor Cylinder Bed Interlock Sewing Machine

Integrated control box design, easy assembly and adjustment, smooth machine operation, low noise and vibration. It uses a stepping motor to drive thread cutting and presser foot lifting, requiring no air pressure, and ensuring quiet operation and ample power.



# SMS 生产管理系统

## SMS PRODUCTION MANAGEMENT SYSTEM



1. 即时各工序产量  
Real time operation output

2. 即时各制程产量  
Real time manufacturing process output

3. WIP 在制件数  
WIP Number of work in progress

4. 每小时计画与实际产出趋势图  
Trend chart of planned and actual output (per hour)

5. 每个制程的即时产出目标达成率  
Real time output hit rate of each manufacturing process

6. 整线即时产出目标达成率  
Whole line real time output hit rate

